

PYROBELITE 7

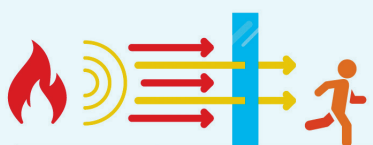
EW30

AGC

Fire-resistant glass focusing
on your safety

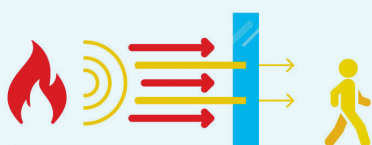


Pyrobelite 7 is a laminated glass assembled with sheets of glass and fire-resistant clear intumescent interlayer(s). In the event of fire, the interlayers transform into rigid and opaque fire shields, that keep out flames and limit the heat transfer through the glazing. The glass delivers fire protection in both directions according to the standard EN 13501-2.



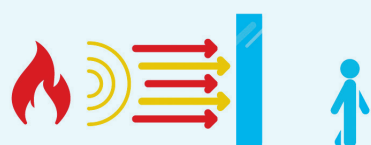
E - Integrity

No flames, smoke, gas.
No heat reduction.



EW - Integrity and Radiation Limitation

No flames, smoke, gas.
Limited heat transfer, restricted
to no more than 15kW/m².



EI - Integrity and Insulation

No flames, smoke, gas.
No heat transfer.

Technical data

Specification / Identification	Pyrobelite 7	Pyrobelite 7 IGU
Glazing type	Single	Double (or triple) Glazing Unit
Grade	Internal	External with UV filter
Glass thickness	7,9 mm	Consult the Glass Configurator: www.agc-yourglass.com/ configurator
Thickness tolerances	± 0,9 mm	
Dimensions tolerances	± 2 mm	
Weight	ca 17 kg/m²	
Minimum dimensions	No minimum	
Light transmission / Light reflection (%)	88 / 8	
U value (EN 673)	5,6 W/(m².K)	
Impact resistance (EN 12600)	3B3	
Burglar resistance (EN 356)*	NPD**	
Sound reduction (EN 12758) Rw (C; Ctr)	34 (0; -3) dB	
Exposure temperatures	-40°C / +50°C	

* The burglar resistance can be increased from P2A to P8B by assembling in IGU Pyrobel with Stratobel & Stratobel Security.

** No performance declared, see Glass configurator.

Fire certification

Check out the product selector for availabilities of fire certification on www.agc-pyrobel.com/selector. The installation must be done in compliance with the fire test report. Pyrobel(ite) is extensively tested & approved under different standards: EN, BS, UL, ASTM, NFPA, ...

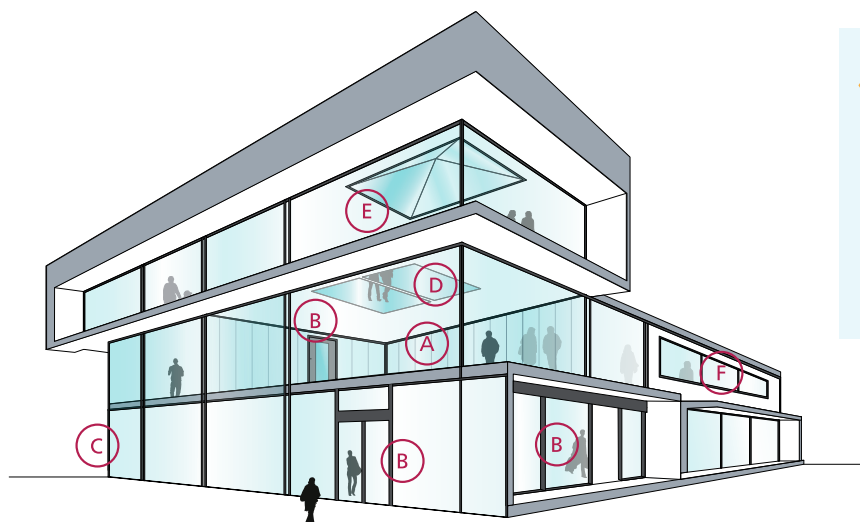
Availability

- SGU** Single glazing unit for internal application
- IGU** Insulated glazing unit for outdoor applications (double or triple glazing)

SPS Special products and combinations such as bulletproof and burglar resistant glass

Applications

The Pyrobel product range has been tested in a large variety of aluminium, steel, wood & butt-joint systems:



- A Fire-resistant all-glass partitions
- B Fire-resistant glazed doors
- C Fire-resistant curtain walls - facades
- D Fire-resistant floor glazing
- E Fire-resistant roof glazing
- F Fire resistant windows

Why choose Pyrobel(ite)?



THE SHORTEST DELIVERY TIMES

Since Pyrobel(ite) **can be cut** by our network of distributors, they can supply you with what you need **quickly and efficiently**.



CRADLE TO CRADLE CERTIFIED

Pyrobel(ite) is **Cradle to Cradle Certified™ Silver**.



PROVIDING SOLUTIONS

We support our customers **with our high-level expertise**.



ACOUSTIC INSULATION

Pyrobel(ite) has excellent **acoustic insulation properties**.



QUALITY

With 40 years of experience, Pyrobel delivers proven long-term quality. Pyrobel(ite) glass has an excellent optical quality supported by a **10-year warranty**.



MADE IN EUROPE



The information and data contained in this document are subject to change without notice.

Questions? Contact our sales team! www.agc-pyrobel.com/contact



PYROBELITE 9 EG

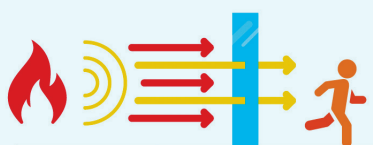
EI20/EW30

AGC

Fire-resistant glass focusing
on your safety

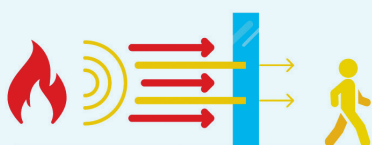


Pyrobelite 9 EG is a laminated glass assembled with sheets of glass and fire-resistant clear intumescent interlayer(s). In the event of fire, the interlayers transform into rigid and opaque fire shields, that keep out flames and limit the heat transfer through the glazing. The glass delivers fire protection in both directions according to the standard EN 13501-2.



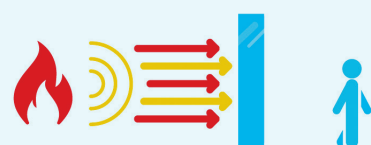
E - Integrity

No flames, smoke, gas.
No heat reduction.



EW - Integrity and Radiation Limitation

No flames, smoke, gas.
Limited heat transfer, restricted
to no more than 15kW/m².



EI - Integrity and Insulation

No flames, smoke, gas.
No heat transfer.

Technical data

Specification / Identification	Pyrobelite 9 EG	Pyrobelite 9 EG IGU
Glazing type	Single	Double (or triple) Glazing Unit
Grade	Internal, 1 side UV filter	External with UV filter
Glass thickness	12,06 mm	Consult the Glass Configurator: www.agc-yourglass.com/ configurator
Thickness tolerances	± 1,5 mm	
Dimensions tolerances	± 2 mm	
Weight	ca 28 kg/m²	
Minimum dimensions	No minimum	
Light transmission / Light reflection (%)	86 / 8	
U value (EN 673)	5,5 W/(m².K)	
Impact resistance (EN 12600)	1B1	
Burglar resistance (EN 356)*	P2A	
Sound reduction (EN 12758) Rw (C; Ctr)	37 (-1; -2) dB	
Exposure temperatures	-40°C / +50°C	

* The burglar resistance can be increased from P2A to P8B by assembling in IGU Pyrobel with Stratobel & Stratobel Security.

Fire certification

Check out the product selector for availabilities of fire certification on www.agc-pyrobel.com/selector. The installation must be done in compliance with the fire test report. Pyrobel(ite) is extensively tested & approved under different standards: EN, BS, UL, ASTM, NFPA, ...

Availability

SGU Single glazing unit for internal application

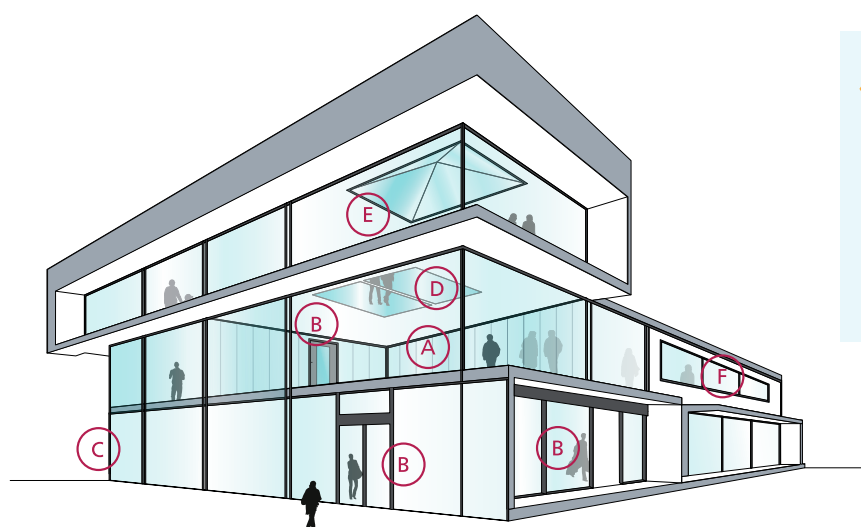
IGU Insulated glazing unit for outdoor applications (double or triple glazing)

EG External grade version Pyrobel EG is single glazed Pyrobel with a 0,76 mm pvb interlayer and extra glass pane that acts as an UV filter

SPS Special products and combinations such as bulletproof and burglar resistant glass

Applications

The Pyrobel product range has been tested in a large variety of aluminium, steel, wood & butt-joint systems:



- A Fire-resistant all-glass partitions
- B Fire-resistant glazed doors
- C Fire-resistant curtain walls - facades
- D Fire-resistant floor glazing
- E Fire-resistant roof glazing
- F Fire resistant windows

Why choose Pyrobel(ite)?



THE SHORTEST DELIVERY TIMES

Since Pyrobel(ite) **can be cut** by our network of distributors, they can supply you with what you need **quickly and efficiently**.



CRADLE TO CRADLE CERTIFIED

Pyrobel(ite) is **Cradle to Cradle Certified™ Silver**.



PROVIDING SOLUTIONS

We support our customers **with our high-level expertise**.



ACOUSTIC INSULATION

Pyrobel(ite) has excellent **acoustic insulation properties**.



QUALITY

With 40 years of experience, Pyrobel delivers proven long-term quality. Pyrobel(ite) glass has an excellent optical quality supported by a **10-year warranty**.



MADE IN EUROPE



The information and data contained in this document are subject to change without notice.

Questions? Contact our sales team! www.agc-pyrobel.com/contact



PYROBELITE 10

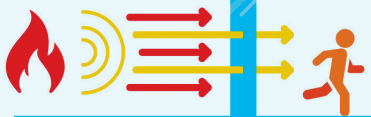
EW30

AGC

Fire-resistant glass focusing
on your safety



Pyrobelite 10 is a laminated glass assembled with sheets of glass and fire-resistant clear intumescent interlayer(s). In the event of fire, the interlayers transform into rigid and opaque fire shields, that keep out flames and limit the heat transfer through the glazing. The glass delivers fire protection in both directions according to the standard EN 13501-2.



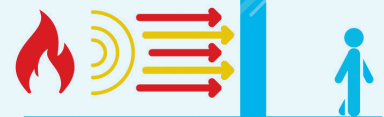
E - Integrity

No flames, smoke, gas.
No heat reduction.



EW - Integrity and Radiation Limitation

No flames, smoke, gas.
Limited heat transfer, restricted
to no more than 15kW/m².



EI - Integrity and Insulation

No flames, smoke, gas.
No heat transfer.

Technical data

Specification / Identification	Pyrobelite 10	Pyrobelite 10 IGU
Glazing type	Single	Double (or triple) Glazing Unit
Grade	Internal	External with UV filter
Glass thickness	11 mm	Consult the Glass Configurator: www.agc-yourglass.com/ configurator
Thickness tolerances	± 1 mm	
Dimensions tolerances	± 2 mm	
Weight	ca 26 kg/m²	
Minimum dimensions	No minimum	
Light transmission / Light reflection (%)	87 / 8	
CV* Light transmission / Light reflection (%)	90 / 8	
U value (EN 673)	5,5 W/(m².K)	
Impact resistance (EN 12600)	2B2	
Sound reduction (EN 12758) Rw (C; Ctr)	37 (-1; -3) dB	
Exposure temperatures	-40°C / +50°C	

* Clearvision (CV) optional, low iron extra clear glass by AGC.

Fire certification

Check out the product selector for availabilities of fire certification on www.agc-pyrobel.com/selector. The installation must be done in compliance with the fire test report. Pyrobel(ite) is extensively tested & approved under different standards: EN, BS, UL, ASTM, NFPA, ...



Your Dreams, Our Challenge

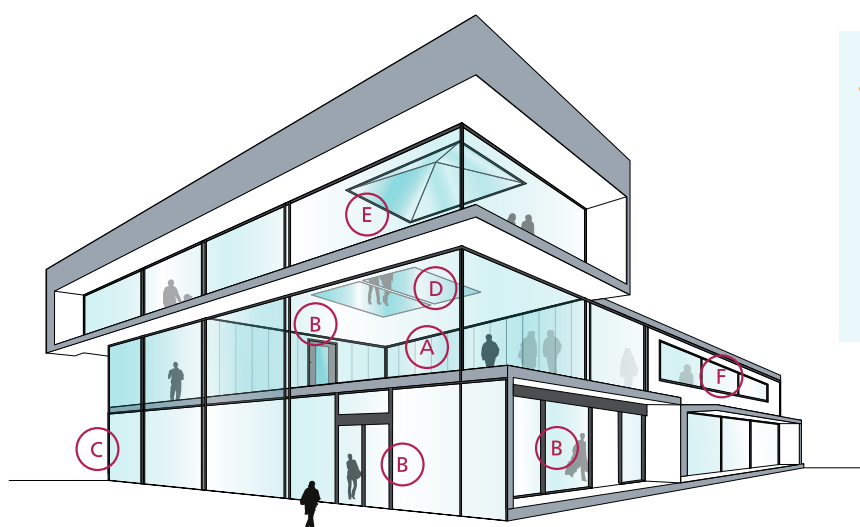
Availability

- SGU** Single glazing unit for internal application
- IGU** Insulated glazing unit for outdoor applications (double or triple glazing)

SPS Special products and combinations such as bulletproof and burglar resistant glass

Applications

The Pyrobel product range has been tested in a large variety of aluminium, steel, wood & butt-joint systems:



- A Fire-resistant all-glass partitions
- B Fire-resistant glazed doors
- C Fire-resistant curtain walls - facades
- D Fire-resistant floor glazing
- E Fire-resistant roof glazing
- F Fire resistant windows

Why choose Pyrobel(ite)?



THE SHORTEST DELIVERY TIMES

Since Pyrobel(ite) **can be cut** by our network of distributors, they can supply you with what you need **quickly and efficiently**.



CRADLE TO CRADLE CERTIFIED

Pyrobel(ite) is **Cradle to Cradle Certified™ Silver**.



PROVIDING SOLUTIONS

We support our customers **with our high-level expertise**.



ACOUSTIC INSULATION

Pyrobel(ite) has excellent **acoustic insulation properties**.



QUALITY

With 40 years of experience, Pyrobel delivers proven long-term quality. Pyrobel(ite) glass has an excellent optical quality supported by a **10-year warranty**.



MADE IN EUROPE



The information and data contained in this document are subject to change without notice.

Questions? Contact our sales team! www.agc-pyrobel.com/contact



PYROBELITE 12

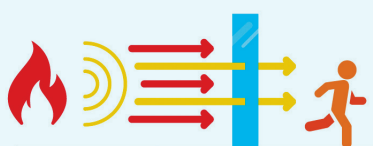
Fire-resistant glass focusing
on your safety



EI20/
EW30/
EW60

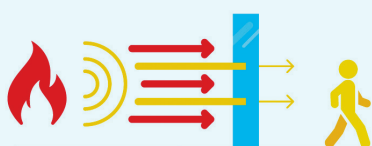
AGC

Pyrobelite 12 is a laminated glass assembled with sheets of glass and fire-resistant clear intumescent interlayer(s). In the event of fire, the interlayers transform into rigid and opaque fire shields, that keep out flames and limit the heat transfer through the glazing. The glass delivers fire protection in both directions according to the standard EN 13501-2.



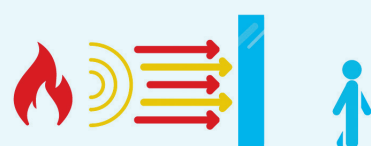
E - Integrity

No flames, smoke, gas.
No heat reduction.



EW - Integrity and Radiation Limitation

No flames, smoke, gas.
Limited heat transfer, restricted
to no more than 15kW/m².



EI - Integrity and Insulation

No flames, smoke, gas.
No heat transfer.

Technical data

Specification / Identification	Pyrobelite 12	Pyrobelite 12 EG	Pyrobelite 12 IGU
Glazing type	Single	Single	Double (or triple) Glazing Unit
Grade	Internal	Internal, 1 side UV filter	External with UV filter
Glass thickness	12,3 mm	16,1 mm	Consult the Glass Configurator: www.agc-yourglass.com/ configurator
Thickness tolerances	± 1 mm	± 1 mm	
Dimensions tolerances	± 2 mm	± 2 mm	
Weight	ca 27 kg/m ²	ca 35 kg/m ²	
Minimum dimensions	No minimum	No minimum	
Light transmission / Light reflection (%)	87 / 8	86 / 8	
CV* Light transmission / Light reflection (%)	90 / 8	90 / 8	
U value (EN 673)	5,5 W/(m ² .K)	5,4 W/(m ² .K)	
Impact resistance (EN 12600)	2B2	1B1	
Burglar resistance (EN 356)**	NPD***	P2A	
Sound reduction (EN 12758) Rw (C; Ctr)	36 (-1; -3) dB	38 (-1; -3) dB	
Exposure temperatures	-40°C / +50°C		

* Clearvision (CV) optional, low iron extra clear glass by AGC.

** The burglar resistance can be increased from P2A to P8B by laminating or assembling in IGU Pyrobel with Stratobel & Stratobel Security.

*** No performance declared, see Glass configurator.

Fire certification

Check out the product selector for availabilities of fire certification on www.agc-pyrobel.com/selector. The installation must be done in compliance with the fire test report. Pyrobel(ite) is extensively tested & approved under different standards: EN, BS, UL, ASTM, NFPA, ...



Your Dreams, Our Challenge

Availability

SGU Single glazing unit for internal application

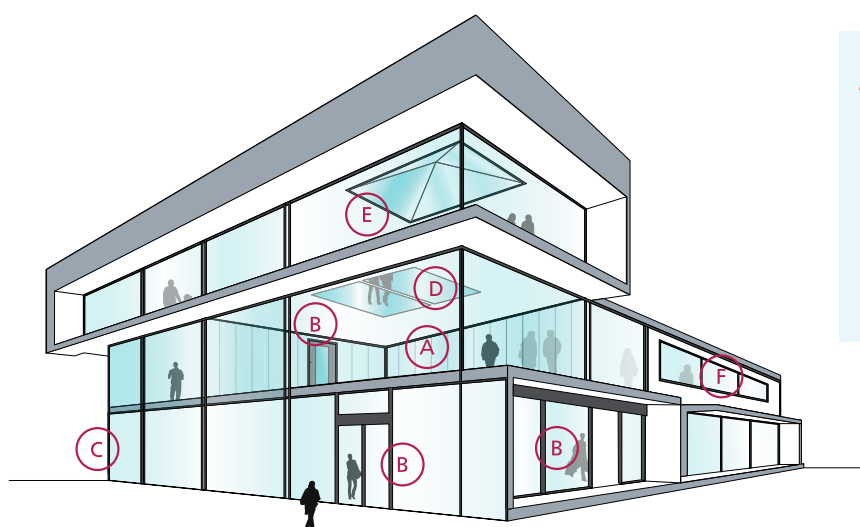
IGU Insulated glazing unit for outdoor applications (double or triple glazing)

EG External grade version Pyrobel EG is single glazed Pyrobel with a 0,76 mm pvb interlayer and extra glass pane that acts as an UV filter

SPS Special products and combinations such as bulletproof and burglar resistant glass

Applications

The Pyrobel product range has been tested in a large variety of aluminium, steel, wood & butt-joint systems:



- A Fire-resistant all-glass partitions
- B Fire-resistant glazed doors
- C Fire-resistant curtain walls - facades
- D Fire-resistant floor glazing
- E Fire-resistant roof glazing
- F Fire resistant windows

Why choose Pyrobel(ite)?



THE SHORTEST DELIVERY TIMES

Since Pyrobel(ite) **can be cut** by our network of distributors, they can supply you with what you need **quickly and efficiently**.



CRADLE TO CRADLE CERTIFIED

Pyrobel(ite) is **Cradle to Cradle Certified™ Silver**.



PROVIDING SOLUTIONS

We support our customers **with our high-level expertise**.



ACOUSTIC INSULATION

Pyrobel(ite) has excellent **acoustic insulation properties**.



QUALITY

With 40 years of experience, Pyrobel delivers proven long-term quality. Pyrobel(ite) glass has an excellent optical quality supported by a **10-year warranty**.



MADE IN EUROPE



The information and data contained in this document are subject to change without notice.

Questions? Contact our sales team! www.agc-pyrobel.com/contact



PYROBEL 16

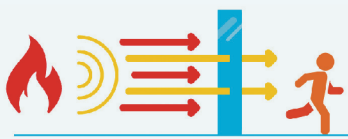
EI30 / EW60

AGC

Fire-resistant glass focusing
on your safety



Pyrobel 16 is a laminated glass assembled with sheets of glass and fire-resistant clear intumescent interlayers. In the event of fire, the interlayers transform into rigid and opaque fire shields, that keep out flames, limit the heat transfer through the glazing and reduce strongly the temperature on the protected surface of the Pyrobel glass. The glass delivers fire protection in both directions according to the standard EN 13501-2.



E - Integrity

No flames, smoke, gas.
No heat reduction.



EW - Integrity and Radiation Limitation

No flames, smoke, gas.
Limited heat transfer, restricted
to no more than 15kW/m².



EI - Integrity and Insulation

No flames, smoke, gas.
No heat transfer.

Technical data

Specification / Identification	Pyrobel 16	Pyrobel 16 EG	Pyrobel 16 IGU
Glazing type	Single	Single	Double (or triple) Glazing Unit
Grade	Internal	Internal, 1 side UV filter	External with UV filter
Glass thickness	17,3 mm	21,1 mm	Consult the Glass Configurator: www.agc-yourglass.com/ configurator
Thickness tolerances	± 1 mm	± 1,5 mm	
Dimensional tolerances	± 2 mm	± 2 mm	
Weight	ca 40 kg/m ²	ca 48 kg/m ²	
Minimum dimensions	No minimum	No minimum	
Light transmission / Light reflection (%)	85 / 8	84 / 8	
CV* Light transmission / Light reflection (%)	89 / 8	89 / 8	
U value (EN 673)	5,3 W/(m ² .K)	5,3 W/(m ² .K)	
Impact resistance (EN 12600)	2B2	1B1	
Burglar resistance (EN 356)**	NPD***	P2A	
Sound reduction (EN 12758) Rw (C; Ctr)	39 (-1; -3) dB	39 (-1; -3) dB	
Exposure temperatures	-40°C / +50°C		

* Clearvision (CV) optional, low iron extra clear glass by AGC.

** The burglar resistance can be increased from P2A to P8B by laminating or assembling in IGU Pyrobel with Stratobel & Stratobel Security Burglary.

*** No performance declared, see Glass configurator.

Fire certification

Check out the product selector for availabilities of fire certification on www.agc-pyrobel.com/selector. The installation must be done in compliance with the fire test report. Pyrobel(ite) is extensively tested & approved under different standards: EN, BS, UL, ASTM, NFPA,...



Your Dreams, Our Challenge

Availability

SGU Single glazing unit for internal application

IGU Insulated glazing unit for outdoor applications (double or triple glazing)

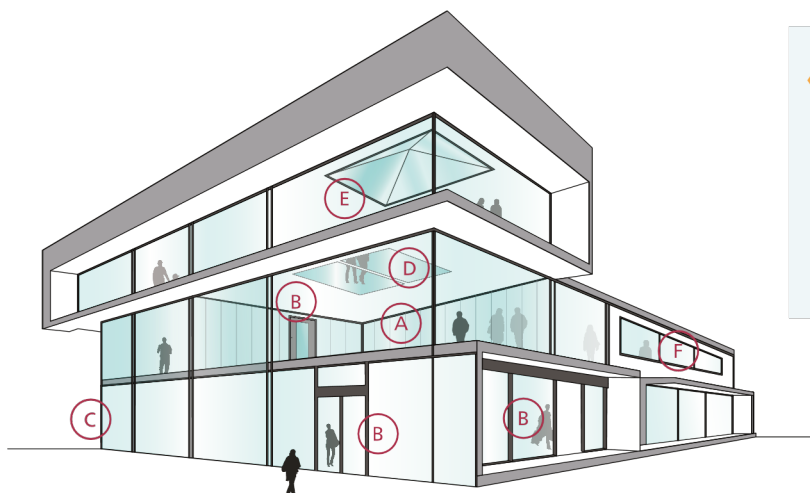
EG External grade version Pyrobel EG is single glazed Pyrobel with a 0,76 mm pvb interlayer and extra glass pane that acts as an UV filter

VL Vision Line which is an all-glass butt-joint glazing system without mullions. Multiple fire-resistant panes of glass are interconnected by means of a 4-5 mm silicone joint. Separate technical data sheets are available for this range of products

SPS Special products and combinations such as bulletproof and burglar resistant glass

Applications

The Pyrobel product range has been tested in a large variety of aluminium, steel, wood & butt-joint systems:



- A Fire-resistant all-glass partitions
- B Fire-resistant glazed doors
- C Fire-resistant curtain walls - facades
- D Fire-resistant floor glazing
- E Fire-resistant roof glazing
- F Fire resistant windows

Why choose Pyrobel(ite)?



THE SHORTEST DELIVERY TIMES

Since Pyrobel(ite) **can be cut** by our network of distributors, they can supply you with what you need **quickly and efficiently**.



CRADLE TO CRADLE CERTIFIED

Pyrobel(ite) is **Cradle to Cradle Certified™ Silver**.



PROVIDING SOLUTIONS

We support our customers **with our high-level expertise**.



ACOUSTIC INSULATION

Pyrobel(ite) has excellent **acoustic insulation properties**.



QUALITY

With 40 years of experience, Pyrobel delivers proven long-term quality. Pyrobel(ite) glass has an excellent optical quality supported by a **10-year warranty**.



MADE IN EUROPE



The information and data contained in this document are subject to change without notice.

Questions? Contact our sales team! www.agc-pyrobel.com/contact



PYROBEL 17N

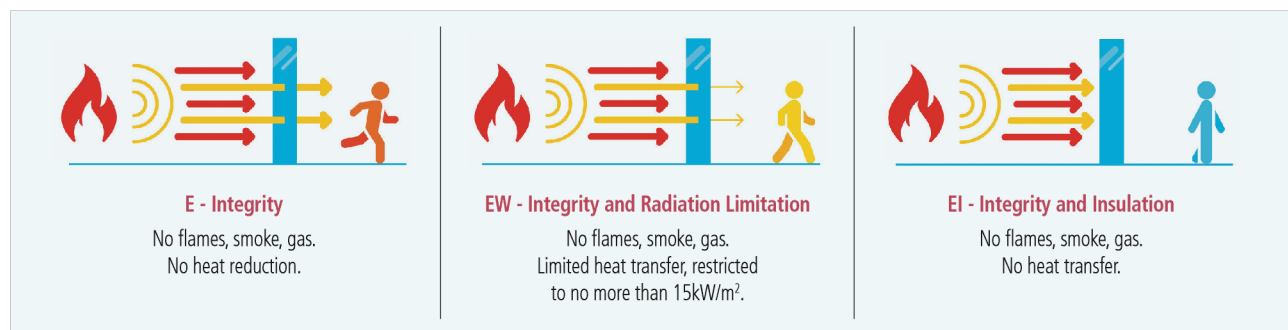
EI45/EW60

AGC

Fire-resistant glass focusing
on your safety



Pyrobel 17N is a laminated glass assembled with sheets of glass and fire-resistant clear intumescent interlayers. In the event of fire, the interlayers transform into rigid and opaque fire shields, that keep out flames, limit the heat transfer through the glazing and reduce strongly the temperature on the protected surface of the Pyrobel glass. The glass delivers fire protection in both directions according to the standard EN 13501-2.



Technical data

Specification / Identification	Pyrobel 17N	Pyrobel 17N EG	Pyrobel 17N IGU
Glazing type	Single	Single	Double (or triple) Glazing Unit
Grade	Internal	Internal, 1 side UV filter	External with UV filter
Glass thickness	17,8 mm	21,6 mm	Consult the Glass Configurator: www.agc-yourglass.com/ configurator
Thickness tolerances	± 1,6 mm	± 1,8 mm	
Dimensions tolerances	± 2 mm	± 2 mm	
Weight	ca 40 kg/m ²	ca 48 kg/m ²	
Minimum dimensions	No minimum	No minimum	
Light transmission / Light reflection (%)	86 / 8	85 / 8	
CV*Light transmission / Light reflection (%)	89 / 8	88 / 8	
U value (EN 673)	5,4 W/(m ² .K)	5,2 W/(m ² .K)	
Impact resistance (EN 12600)	1B1	1B1	
Burglar resistance (EN 356)**	P1A	P2A	
Sound reduction (EN 12758) Rw (C; Ctr)	39 (0; -3) dB	40 (-1; -3) dB	
Exposure temperatures	-40°C / +50°C		

* Clearvision (CV) optional, low iron extra clear glass by AGC.

** The burglar resistance can be increased from P2A to P8B by laminating or assembling in IGU Pyrobel with Stratobel & Stratobel Security Burglary.

Fire certification

Check out the product selector for availabilities of fire certification on www.agc-pyrobel.com/selector. The installation must be done in compliance with the fire test report. Pyrobel(ite) is extensively tested & approved under different standards: EN, BS, UL, ASTM, NFPA,...



Your Dreams, Our Challenge

Availability

SGU Single glazing unit for internal application

IGU Insulated glazing unit for outdoor applications (double or triple glazing)

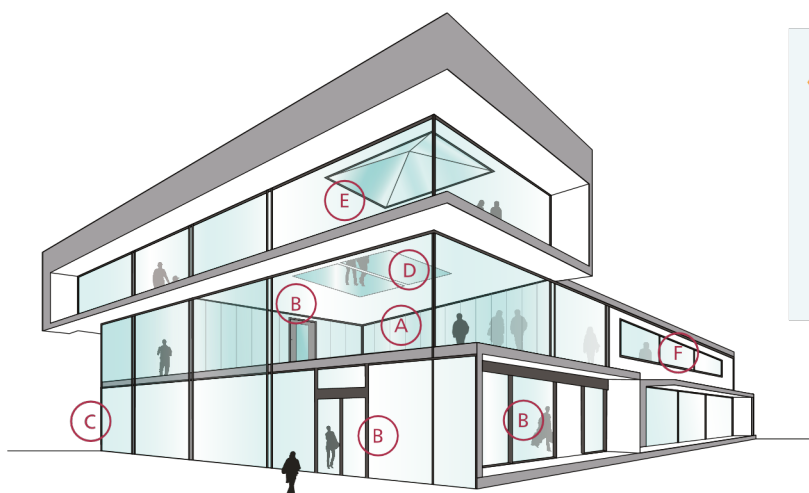
EG External grade version Pyrobel EG is single glazed Pyrobel with a 0,76 mm pvb interlayer and extra glass pane that acts as an UV filter

VL Vision Line which is an all-glass butt-joint glazing system without mullions. Multiple fire-resistant panes of glass are interconnected by means of a 4-5 mm silicone joint. Separate technical data sheets are available for this range of products

SPS Special products and combinations such as bulletproof and burglar resistant glass

Applications

The Pyrobel product range has been tested in a large variety of aluminium, steel, wood & butt-joint systems:



- A Fire-resistant all-glass partitions
- B Fire-resistant glazed doors
- C Fire-resistant curtain walls - facades
- D Fire-resistant floor glazing
- E Fire-resistant roof glazing
- F Fire resistant windows

Why choose Pyrobel(ite)?



THE SHORTEST DELIVERY TIMES

Since Pyrobel(ite) **can be cut** by our network of distributors, they can supply you with what you need **quickly and efficiently**.



CRADLE TO CRADLE CERTIFIED

Pyrobel(ite) is **Cradle to Cradle Certified™ Silver**.



PROVIDING SOLUTIONS

We support our customers **with our high-level expertise**.



ACOUSTIC INSULATION

Pyrobel(ite) has excellent **acoustic insulation properties**.



QUALITY

With 40 years of experience, Pyrobel delivers proven long-term quality. Pyrobel(ite) glass has an excellent optical quality supported by a **10-year warranty**.



MADE IN EUROPE



The information and data contained in this document are subject to change without notice.

Questions? Contact our sales team! www.agc-pyrobel.com/contact



PYROBEL 25

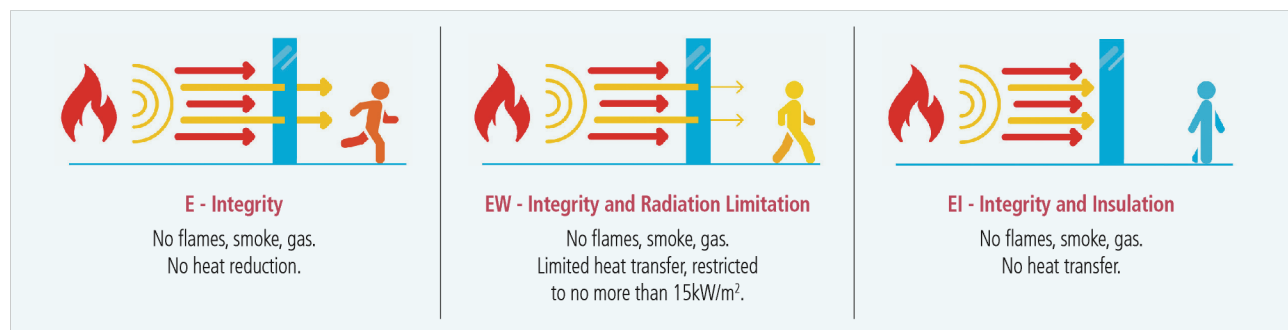
EI60

AGC

Fire-resistant glass focusing
on your safety



Pyrobel 25 is a laminated glass assembled with sheets of glass and fire-resistant clear intumescent interlayers. In the event of fire, the interlayers transform into rigid and opaque fire shields, that keep out flames, limit the heat transfer through the glazing and reduce strongly the temperature on the protected surface of the Pyrobel glass. The glass delivers fire protection in both directions according to the standard EN 13501-2.



Technical data

Specification / Identification	Pyrobel 25	Pyrobel 25 EG	Pyrobel 25 IGU
Glazing type	Single	Single	Double (or triple) Glazing Unit
Grade	Internal	Internal, 1 side UV filter	External with UV filter
Glass thickness	26,6 mm	30,4 mm	Consult the Glass Configurator: www.agc-yourglass.com/ configurator
Thickness tolerances	± 2 mm	± 2 mm	
Dimensions tolerances	± 2 mm	± 2 mm	
Weight	ca 60 kg/m²	ca 68 kg/m²	
Minimum dimensions	No minimum	No minimum	
Light transmission / Light reflection (%)	82 / 7	82 / 7	
CV* Light transmission / Light reflection (%)	88 / 8	87 / 8	
U value (EN 673)	5,1 W/(m².K)	5,0 W/(m².K)	
Impact resistance (EN 12600)	1B1	1B1	
Burglar resistance (EN 356)**	P1A	P2A	
Sound reduction (EN 12758) Rw (C; Ctr)	40 (-1; -3) dB	43 (-1; -4) dB	
Exposure temperatures	-40°C / +50°C		

* Clearvision (CV) optional, low iron extra clear glass by AGC.

** The burglar resistance can be increased from P2A to P8B by laminating or assembling in IGU Pyrobel with Stratobel & Stratobel Security Burglary.

Fire certification

Check out the product selector for availabilities of fire certification on www.agc-pyrobel.com/selector. The installation must be done in compliance with the fire test report. Pyrobel(ite) is extensively tested & approved under different standards: EN, BS, UL, ASTM, NFPA,...



Your Dreams, Our Challenge

Availability

SGU Single glazing unit for internal application

IGU Insulated glazing unit for outdoor applications (double or triple glazing)

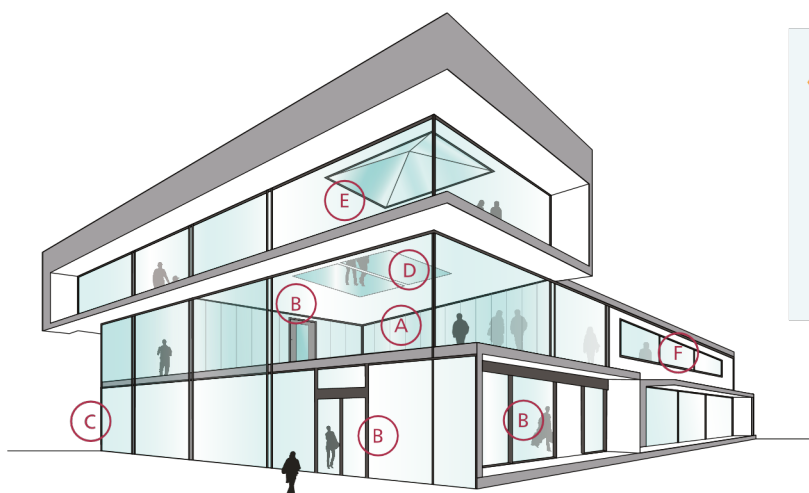
EG External grade version Pyrobel EG is single glazed Pyrobel with a 0,76 mm pvb interlayer and extra glass pane that acts as an UV filter

VL Vision Line which is an all-glass butt-joint glazing system without mullions. Multiple fire-resistant panes of glass are interconnected by means of a 4-5 mm silicone joint. Separate technical data sheets are available for this range of products

SPS Special products and combinations such as bulletproof and burglar resistant glass

Applications

The Pyrobel product range has been tested in a large variety of aluminium, steel, wood & butt-joint systems:



- A Fire-resistant all-glass partitions
- B Fire-resistant glazed doors
- C Fire-resistant curtain walls - facades
- D Fire-resistant floor glazing
- E Fire-resistant roof glazing
- F Fire resistant windows

Why choose Pyrobel(ite)?



THE SHORTEST DELIVERY TIMES

Since Pyrobel(ite) **can be cut** by our network of distributors, they can supply you with what you need **quickly and efficiently**.



CRADLE TO CRADLE CERTIFIED

Pyrobel(ite) is **Cradle to Cradle Certified™ Silver**.



PROVIDING SOLUTIONS

We support our customers **with our high-level expertise**.



ACOUSTIC INSULATION

Pyrobel(ite) has excellent **acoustic insulation properties**.



QUALITY

With 40 years of experience, Pyrobel delivers proven long-term quality. Pyrobel(ite) glass has an excellent optical quality supported by a **10-year warranty**.



MADE IN EUROPE



The information and data contained in this document are subject to change without notice.

Questions? Contact our sales team! www.agc-pyrobel.com/contact



PYROBEL 30 EG2

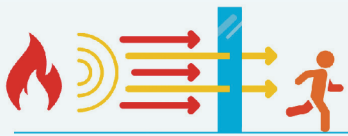
EI90

AGC

Fire-resistant glass focusing
on your safety

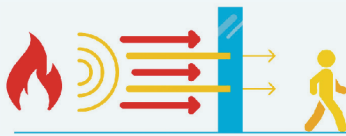


Pyrobel 30 EG2 is a laminated glass assembled with sheets of glass and fire-resistant clear intumescent interlayers. In the event of fire, the interlayers transform into rigid and opaque fire shields, that keep out flames, limit the heat transfer through the glazing and reduce strongly the temperature on the protected surface of the Pyrobel glass. The glass delivers fire protection in both directions according to the standard EN 13501-2.



E - Integrity

No flames, smoke, gas.
No heat reduction.



EW - Integrity and Radiation Limitation

No flames, smoke, gas.
Limited heat transfer, restricted
to no more than 15kW/m².



EI - Integrity and Insulation

No flames, smoke, gas.
No heat transfer.

Technical data

Specification / Identification	Pyrobel 30 EG2
Glazing type	Single
Grade	internal, 2 sides UV filter
Glass thickness	37,5 mm
Thickness tolerances	± 3 mm
Dimensions tolerances	± 2 mm
Weight	ca 85 kg/m ²
Minimum dimensions	No minimum
Light transmission / Light reflection (%)	80 / 7
CV* Light transmission / Light reflection (%)	86 / 8
U value (EN 673)	4,8 W/(m ² .K)
Impact resistance (EN 12600)	1B1
Burglar resistance (EN 356)**	P2A
Sound reduction (EN 12758) Rw (C; Ctr)	44 (-1; -4) dB
Exposure temperatures	-40°C / +50°C

* Clearvision (CV) optional, low iron extra clear glass by AGC.

** The burglar resistance can be increased from P2A to P8B by laminating or assembling in IGU Pyrobel with Stratobel & Stratobel Security Burglary.

Fire certification

Check out the product selector for availabilities of fire certification on www.agc-pyrobel.com/selector. The installation must be done in compliance with the fire test report. Pyrobel(ite) is extensively tested & approved under different standards: EN, BS, UL, ASTM, NFPA,...



Your Dreams, Our Challenge

Availability

SGU Single glazing unit for internal application

IGU Insulated glazing unit for outdoor applications (double or triple glazing)

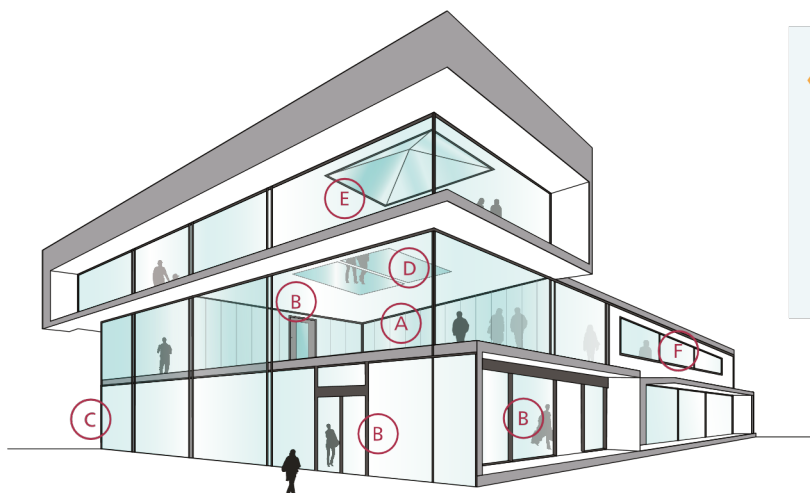
EG External grade version Pyrobel EG is single glazed Pyrobel with a 0,76 mm pvb interlayer and extra glass pane that acts as an UV filter

VL Vision Line which is an all-glass butt-joint glazing system without mullions. Multiple fire-resistant panes of glass are interconnected by means of a 4-5 mm silicone joint. Separate technical data sheets are available for this range of products

SPS Special products and combinations such as bulletproof and burglar resistant glass

Applications

The Pyrobel product range has been tested in a large variety of aluminium, steel, wood & butt-joint systems:



- A Fire-resistant all-glass partitions
- B Fire-resistant glazed doors
- C Fire-resistant curtain walls - facades
- D Fire-resistant floor glazing
- E Fire-resistant roof glazing
- F Fire resistant windows

Why choose Pyrobel(ite)?



THE SHORTEST DELIVERY TIMES

Since Pyrobel(ite) **can be cut** by our network of distributors, they can supply you with what you need **quickly and efficiently**.



CRADLE TO CRADLE CERTIFIED

Pyrobel(ite) is **Cradle to Cradle Certified™ Silver**.



PROVIDING SOLUTIONS

We support our customers **with our high-level expertise**.



ACOUSTIC INSULATION

Pyrobel(ite) has excellent **acoustic insulation properties**.



QUALITY

With 40 years of experience, Pyrobel delivers proven long-term quality. Pyrobel(ite) glass has an excellent optical quality supported by a **10-year warranty**.



MADE IN EUROPE



The information and data contained in this document are subject to change without notice.

Questions? Contact our sales team! www.agc-pyrobel.com/contact



PYROBEL 53N

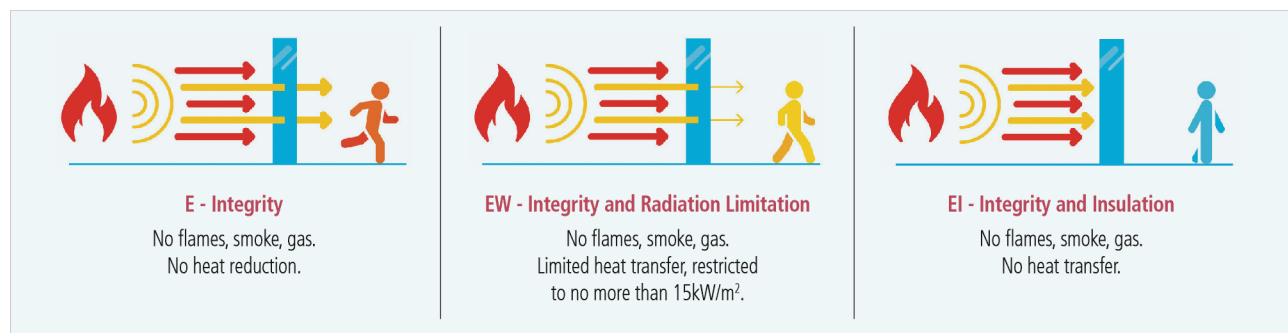
EI120

AGC

Fire-resistant glass focusing
on your safety



Pyrobel 53N is a laminated glass assembled with sheets of glass and fire-resistant clear intumescent interlayers. In the event of fire, the interlayers transform into rigid and opaque fire shields, that keep out flames, limit the heat transfer through the glazing and reduce strongly the temperature on the protected surface of the Pyrobel glass. The glass delivers fire protection in both directions according to the standard EN 13501-2.



Technical data

Specification / Identification	Pyrobel 53N	Pyrobel 53N EG	Pyrobel 53N IGU
Glazing type	Single	Single	Double (or triple) Glazing Unit
Grade	Internal	Internal, 1 side UV filter	External with UV filter
Glass thickness	52,7 mm	56,5 mm	Consult the Glass Configurator: www.agc-yourglass.com/ configurator
Thickness tolerances	± 3 mm	± 3 mm	
Dimensions tolerances	± 2 mm	± 2 mm	
Weight	ca 122 kg/m ²	ca 130 kg/m ²	
Minimum dimensions	No minimum	No minimum	
Light transmission / Light reflection (%)	75 / 7	73 / 7	
CV* Light transmission / Light reflection (%)	84 / 8	84 / 8	
U value (EN 673)	4,5 W/(m ² .K)	4,4 W/(m ² .K)	
Impact resistance (EN 12600)	1B1	1B1	
Burglar resistance (EN356)**	P2A	P2A	
Sound reduction (EN 12758) Rw (C; Ctr)	48 (-2; -7) dB	49 (-1; -6) dB	
Exposure temperatures	-40°C / +50°C		

* Clearvision (CV) optional, low iron extra clear glass by AGC.

** The burglar resistance can be increased from P2A to P8B by laminating or assembling in IGU Pyrobel with Stratobel & Stratobel Security Burglary.

Fire certification

Check out the product selector for availabilities of fire certification on www.agc-pyrobel.com/selector. The installation must be done in compliance with the fire test report. Pyrobel(ite) is extensively tested & approved under different standards: EN, BS, UL, ASTM, NFPA,...



Your Dreams, Our Challenge

Availability

SGU Single glazing unit for internal application

IGU Insulated glazing unit for outdoor applications (double or triple glazing)

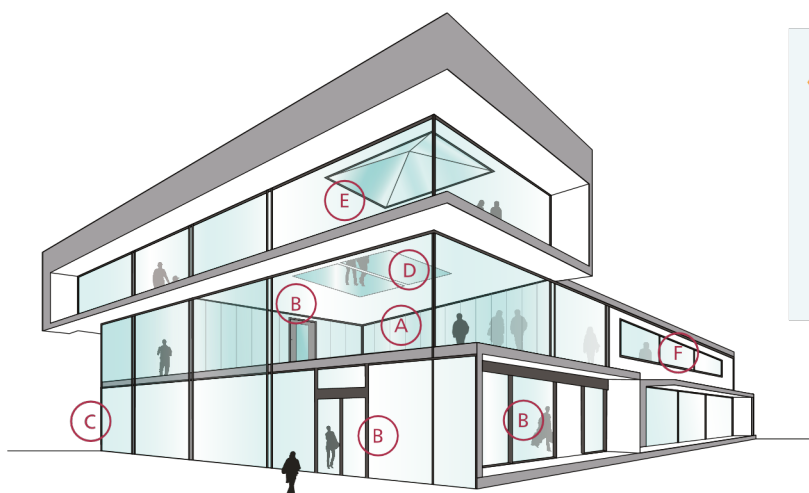
EG External grade version Pyrobel EG is single glazed Pyrobel with a 0,76 mm pvb interlayer and extra glass pane that acts as an UV filter

VL Vision Line which is an all-glass butt-joint glazing system without mullions. Multiple fire-resistant panes of glass are interconnected by means of a 4-5 mm silicone joint. Separate technical data sheets are available for this range of products

SPS Special products and combinations such as bulletproof and burglar resistant glass

Applications

The Pyrobel product range has been tested in a large variety of aluminium, steel, wood & butt-joint systems:



- A Fire-resistant all-glass partitions
- B Fire-resistant glazed doors
- C Fire-resistant curtain walls - facades
- D Fire-resistant floor glazing
- E Fire-resistant roof glazing
- F Fire resistant windows

Why choose Pyrobel(ite)?



THE SHORTEST DELIVERY TIMES

Since Pyrobel(ite) **can be cut** by our network of distributors, they can supply you with what you need **quickly and efficiently**.



CRADLE TO CRADLE CERTIFIED

Pyrobel(ite) is **Cradle to Cradle Certified™ Silver**.



PROVIDING SOLUTIONS

We support our customers **with our high-level expertise**.



ACOUSTIC INSULATION

Pyrobel(ite) has excellent **acoustic insulation properties**.



QUALITY

With 40 years of experience, Pyrobel delivers proven long-term quality. Pyrobel(ite) glass has an excellent optical quality supported by a **10-year warranty**.



MADE IN EUROPE



The information and data contained in this document are subject to change without notice.

Questions? Contact our sales team! www.agc-pyrobel.com/contact



PYROBEL 54

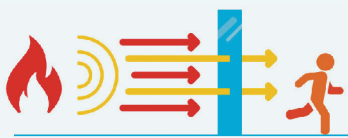
EI120

AGC

Fire-resistant glass focusing
on your safety

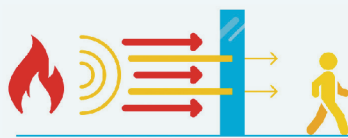


Pyrobel 54 is a laminated glass assembled with sheets of glass and fire-resistant clear intumescent interlayers. In the event of fire, the interlayers transform into rigid and opaque fire shields, that keep out flames, limit the heat transfer through the glazing and reduce strongly the temperature on the protected surface of the Pyrobel glass. The glass delivers fire protection in both directions according to the standard EN 13501-2.



E - Integrity

No flames, smoke, gas.
No heat reduction.



EW - Integrity and Radiation Limitation

No flames, smoke, gas.
Limited heat transfer, restricted
to no more than 15kW/m².



EI - Integrity and Insulation

No flames, smoke, gas.
No heat transfer.

Technical data

Specification / Identification	Pyrobel 54	Pyrobel 54 EG	Pyrobel 54 IGU
Glazing type	Single	Single	Double (or triple) Glazing Unit
Grade	Internal	Internal, 1 side UV filter	External with UV filter
Glass thickness	54 mm	57,8 mm	Consult the Glass Configurator: www.agc-yourglass.com/ configurator
Thickness tolerances	± 3 mm	± 3 mm	
Dimensions tolerances	± 2 mm	± 2 mm	
Weight	ca 124 kg/m ²	ca 132 kg/m ²	
Minimum dimensions	No minimum	No minimum	
Light transmission / Light reflection (%)	75 / 7	74 / 7	
CV* Light transmission / Light reflection (%)	83 / 7	83 / 7	
U value (EN 673)	4,4 W/(m ² .K)	4,4 W/(m ² .K)	
Impact resistance (EN 12600)	1B1	1B1	
Burglar resistance (EN 356)**	P2A	P2A	
Sound reduction (EN 12758) Rw (C; Ctr)	49 (-1; -4) dB	49 (0; -3) dB	
Exposure temperatures	-40°C / +50°C		

* Clearvision (CV) optional, low iron extra clear glass by AGC.

** The burglar resistance can be increased from P2A to P8B by laminating or assembling in IGU Pyrobel with Stratobel & Stratobel Security Burglary.

Fire certification

Check out the product selector for availabilities of fire certification on www.agc-pyrobel.com/selector. The installation must be done in compliance with the fire test report. Pyrobel(ite) is extensively tested & approved under different standards: EN, BS, UL, ASTM, NFPA,...



Your Dreams, Our Challenge

Availability

SGU Single glazing unit for internal application

IGU Insulated glazing unit for outdoor applications (double or triple glazing)

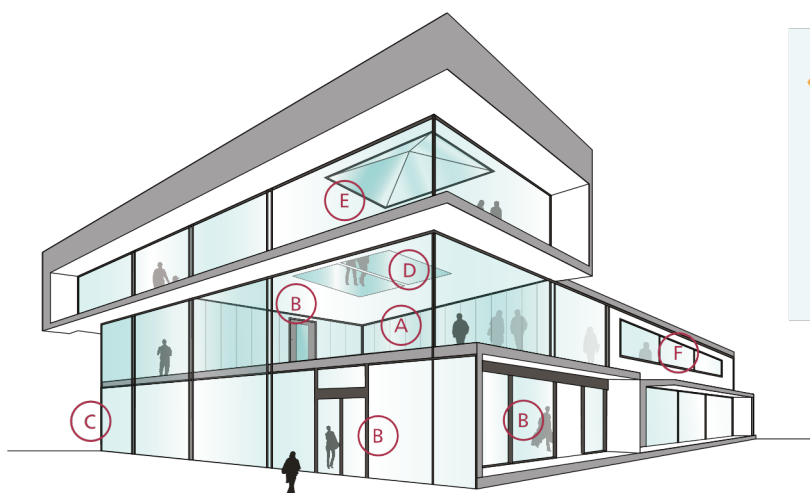
EG External grade version Pyrobel EG is single glazed Pyrobel with a 0,76 mm pvb interlayer and extra glass pane that acts as an UV filter

VL Vision Line which is an all-glass butt-joint glazing system without mullions. Multiple fire-resistant panes of glass are interconnected by means of a 4-5 mm silicone joint. Separate technical data sheets are available for this range of products

SPS Special products and combinations such as bulletproof and burglar resistant glass

Applications

The Pyrobel product range has been tested in a large variety of aluminium, steel, wood & butt-joint systems:



- A Fire-resistant all-glass partitions
- B Fire-resistant glazed doors
- C Fire-resistant curtain walls - facades
- D Fire-resistant floor glazing
- E Fire-resistant roof glazing
- F Fire resistant windows

Why choose Pyrobel(ite)?



THE SHORTEST DELIVERY TIMES

Since Pyrobel(ite) **can be cut** by our network of distributors, they can supply you with what you need **quickly and efficiently**.



CRADLE TO CRADLE CERTIFIED

Pyrobel(ite) is **Cradle to Cradle Certified™ Silver**.



PROVIDING SOLUTIONS

We support our customers **with our high-level expertise**.



ACOUSTIC INSULATION

Pyrobel(ite) has excellent **acoustic insulation properties**.



QUALITY

With 40 years of experience, Pyrobel delivers proven long-term quality. Pyrobel(ite) glass has an excellent optical quality supported by a **10-year warranty**.



MADE IN EUROPE



The information and data contained in this document are subject to change without notice.

Questions? Contact our sales team! www.agc-pyrobel.com/contact



PYROBEL 81

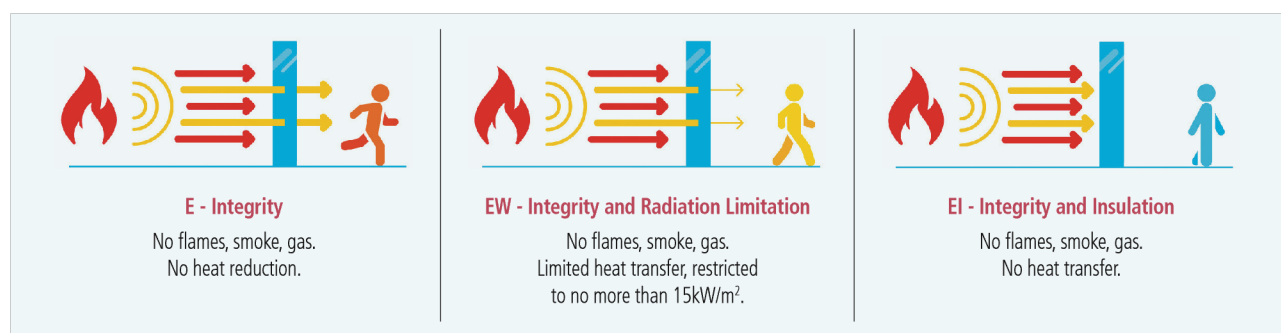
EI 180

AGC

Fire-resistant glass focusing
on your safety



Pyrobel 81 is a laminated glass assembled with sheets of glass and fire-resistant clear intumescent interlayers. In the event of fire, the interlayers transform into rigid and opaque fire shields, that keep out flames, limit the heat transfer through the glazing and reduce strongly the temperature on the protected surface of the Pyrobel glass. The glass delivers fire protection in both directions according to the standard EN 13501-2.



Technical data

Specification / Identification	Pyrobel 81	Pyrobel 81 EG
Glazing type	Single	Single
Grade	Internal	Internal, 1 side UV filter
Glass thickness	81 mm	85 mm
Thickness tolerances	± 3 mm	± 3 mm
Dimensions tolerances	± 2 mm	± 2 mm
Weight	ca 187 kg/m ²	ca 195 kg/m ²
Minimum dimensions	No minimum	No minimum
Light transmission / Light reflection (%)	68 / 6	68 / 6
U value (EN 673)	4,0 (W/m ² .K)	3,9 (W/m ² .K)
Impact resistance (EN 12600)	1B1	1B1
Sound reduction (EN 12758) Rw (C; Ctr)	NPD*	NPD*
Exposure temperatures	-40°C / +50°C	

* No performance declared, see Glass configurator.

Fire certification

Check out the product selector for availabilities of fire certification on www.agc-pyrobel.com/selector. The installation must be done in compliance with the fire test report. Pyrobel(ite) is extensively tested & approved under different standards: EN, BS, UL, ASTM, NFPA,...



Your Dreams, Our Challenge

Availability

SGU Single glazing unit for internal application

IGU Insulated glazing unit for outdoor applications (double or triple glazing)

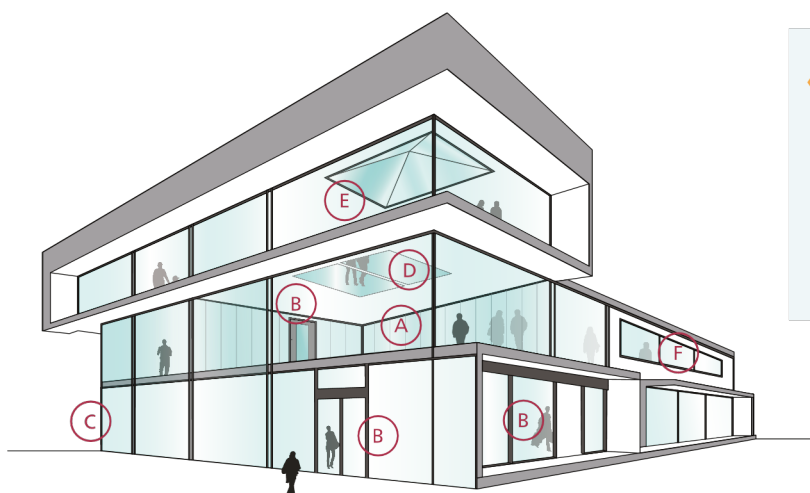
EG External grade version Pyrobel EG is single glazed Pyrobel with a 0,76 mm pvb interlayer and extra glass pane that acts as an UV filter

VL Vision Line which is an all-glass butt-joint glazing system without mullions. Multiple fire-resistant panes of glass are interconnected by means of a 4-5 mm silicone joint. Separate technical data sheets are available for this range of products

SPS Special products and combinations such as bulletproof and burglar resistant glass

Applications

The Pyrobel product range has been tested in a large variety of aluminium, steel, wood & butt-joint systems:



- A Fire-resistant all-glass partitions
- B Fire-resistant glazed doors
- C Fire-resistant curtain walls - facades
- D Fire-resistant floor glazing
- E Fire-resistant roof glazing
- F Fire resistant windows

Why choose Pyrobel(ite)?



THE SHORTEST DELIVERY TIMES

Since Pyrobel(ite) **can be cut** by our network of distributors, they can supply you with what you need **quickly and efficiently**.



CRADLE TO CRADLE CERTIFIED

Pyrobel(ite) is **Cradle to Cradle Certified™ Silver**.



PROVIDING SOLUTIONS

We support our customers **with our high-level expertise**.



ACOUSTIC INSULATION

Pyrobel(ite) has excellent **acoustic insulation properties**.



QUALITY

With 40 years of experience, Pyrobel delivers proven long-term quality. Pyrobel(ite) glass has an excellent optical quality supported by a **10-year warranty**.



MADE IN EUROPE



The information and data contained in this document are subject to change without notice.

Questions? Contact our sales team! www.agc-pyrobel.com/contact



PYROBEL 16 VISION LINE

Fire-resistant glass focusing on your safety

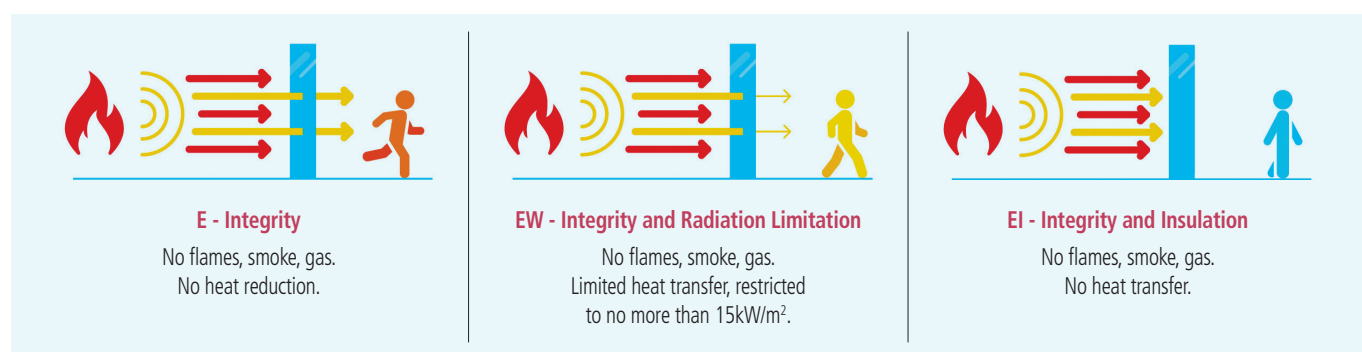


EI30

AGC

Pyrobel 16 Vision Line (VL) is a butt-joined system using multiple Pyrobel fire-resistant glass panes interconnected by means of a 4-5 mm silicone joint, which offers a maximum of light transparency. Pyrobel Vision Line delivers fire resistant, unbroken walls of glass that ensures a broad field of vision, making it the perfect choice for modern fully glazed partitions. The glass delivers fire protection in both directions according to the standard EN 13501-2.

Pyrobel Vision Line Corner is a version that allows glazing to be installed edge to edge with surfaces at angles ranging from 90° to 180°.



Technical data

Specification / Identification	Pyrobel 16 VL	Pyrobel 16 EG (+6) VL	Pyrobel 16 EG2 VL
Glazing type	Single	Single	Single
Grade	Internal	Internal, 1 side UV filter	Internal, 2 sides UV filter
Glass thickness	17,3 mm	24,1 mm	24,8 mm
Thickness tolerances	± 1 mm	± 1,7 mm	± 1,7 mm
Dimensional tolerances	± 2 mm	± 2 mm	± 2 mm
Weight	ca 40 kg/m²	ca 55 kg/m²	ca 56 kg/m²
Minimum dimensions	No minimum	No minimum	No minimum
Light transmission / Light reflection (%)	85 / 8	83 / 7	81 / 7
CV* Light transmission / Light reflection (%)	89 / 8	89 / 8	NPD**
U value (EN 673)	5,3 W/(m².K)	5,1 W/(m².K)	5,0 W/(m².K)
Impact resistance (EN 12600)	2B2	1B1	1B1
Burglar resistance (EN 356)	NPD**	P2A	NPD**
Sound reduction (EN 12758) Rw (C; Ctr)	39 (-1; -3) dB	39 (-1; -3) dB	40 (-1; -3) dB
Exposure temperatures	-40°C / +50°C		

* Clearvision (CV) optional, low iron extra clear glass by AGC.

** No performance declared, see Glass configurator.

Fire certification

Check out the product selector for availabilities of fire certification on www.agc-pyrobel.com/selector. The installation must be done in compliance with the fire test report. Pyrobel(ite) is extensively tested & approved under different standards: EN, BS, UL, ASTM, NFPA, ...



Your Dreams, Our Challenge

Availability

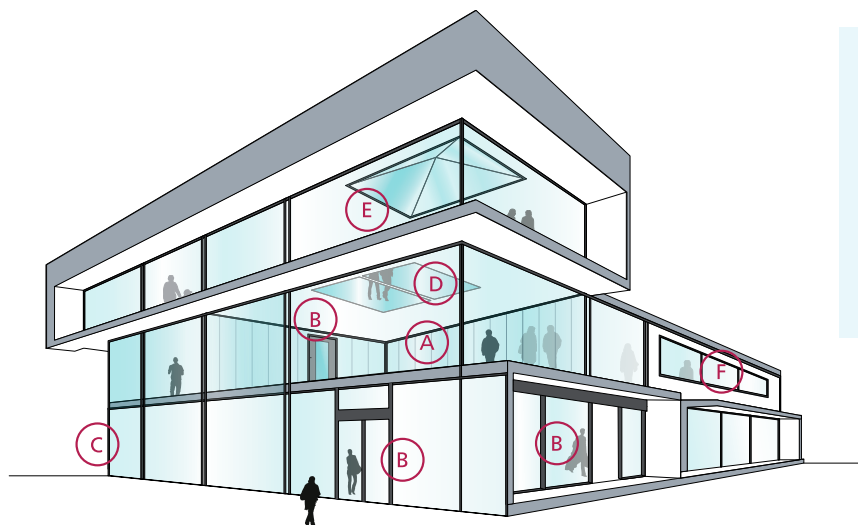
SGU Single glazing unit for internal application

EG External grade version Pyrobel EG is single glazed Pyrobel with a 0,76 mm pvb interlayer and extra glass pane that acts as an UV filter

VL Vision Line which is an all-glass butt-joint glazing system without mullions

Applications

The Pyrobel product range has been tested in a large variety of aluminium, steel, wood & butt-joint systems:



- A Fire-resistant all-glass partitions
- B Fire-resistant glazed doors
- C Fire-resistant curtain walls - facades
- D Fire-resistant floor glazing
- E Fire-resistant roof glazing
- F Fire resistant windows

Why choose Pyrobel Vision Line?



AESTHETICS

The **modern and stylish** Pyrobel Vision Line system meets the needs of designers and architects looking for **glazed solutions without mullions**, also available in large dimensions.



SAFETY

Pyrobel Vision Line is made of **safety glass** according to EN 12600. The glass is fire-resistant on **both sides**.



PROVIDING SOLUTIONS

We support our customers **with our high-level expertise**.



COMFORT

An **unrivalled light transmission** and an **optimal acoustic insulation** for maximal comfort.



QUALITY

With 40 years of experience, Pyrobel Vision Line delivers proven long-term quality.



MADE IN EUROPE



The information and data contained in this document are subject to change without notice.

Questions? Contact our sales team! www.agc-pyrobel.com/contact



PYROBEL 17N EG2 VISION LINE

Fire-resistant glass focusing
on your safety

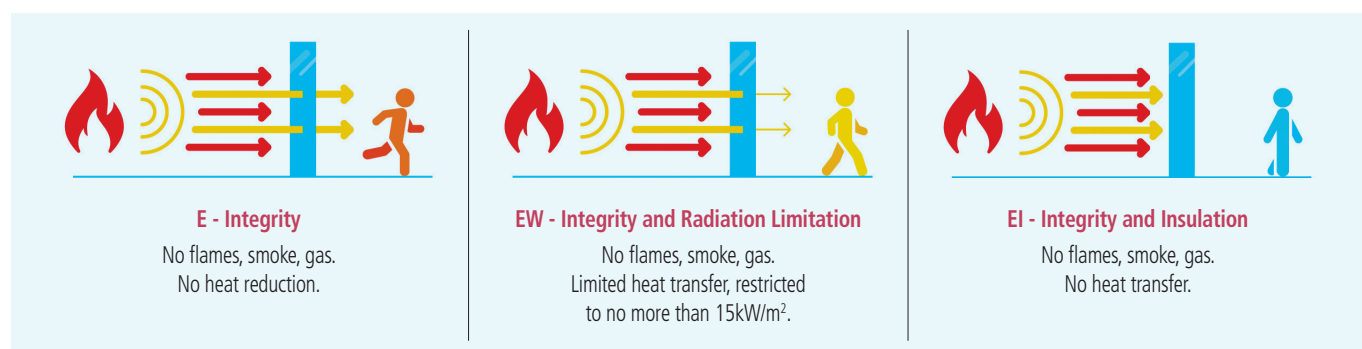


EI45

AGC

Pyrobel 17N EG2 Vision Line (VL) is a butt-joined system using multiple Pyrobel fire-resistant glass panes interconnected by means of a 4-5 mm silicone joint, which offers a maximum of light transparency. Pyrobel Vision Line delivers fire-resistant, unbroken walls of glass, that ensures a broad field of vision, making it the perfect choice for modern fully glazed partitions. The glass delivers fire protection in both directions according to the standard EN 13501-2.

Pyrobel Vision Line Corner is a version that allows glazing to be installed edge to edge with surfaces at angles ranging from 90° to 180°.



Technical data

Specification / Identification	Pyrobel 17N EG2 VL
Glazing type	Single
Grade	Internal, 2 sides UV filter
Glass thickness	25,3 mm
Thickness tolerances	± 2 mm
Dimensions tolerances	± 2 mm
Weight	ca 56 kg/m²
Minimum dimensions	No minimum
Light transmission / Light reflection (%)	83 / 8
U value (EN 673)	5,0 W/(m².K)
Impact resistance (EN 12600)	1B1
Burglar resistance (EN 356)	P2A
Sound reduction (EN 12758) Rw (C; Ctr)	NPD*
Exposure temperatures	-40°C / +50°C

* No performance declared, see Glass configurator.

Fire certification

Check out the product selector for availabilities of fire certification on www.agc-pyrobel.com/selector. The installation must be done in compliance with the fire test report. Pyrobel(ite) is extensively tested & approved under different standards: EN, BS, UL, ASTM, NFPA, ...



Your Dreams, Our Challenge

Availability

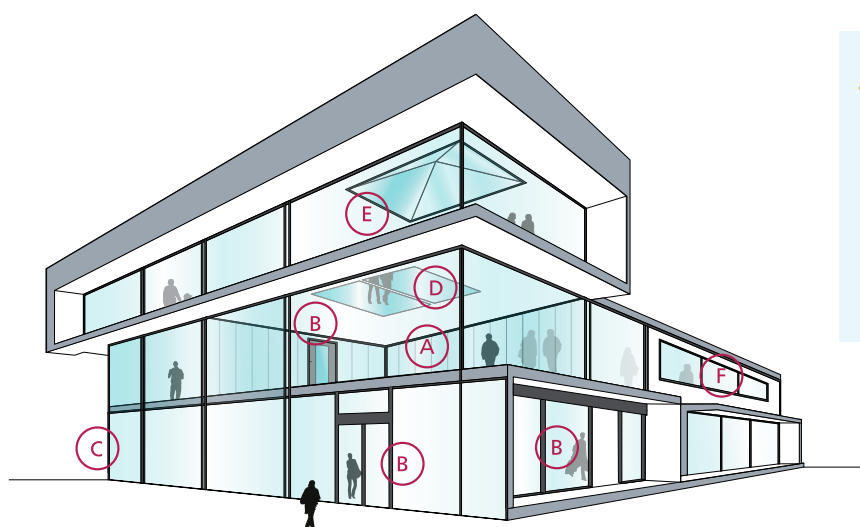
SGU Single glazing unit for internal application

EG External grade version Pyrobel EG is single glazed Pyrobel with a 0,76 mm pvb interlayer and extra glass pane that acts as an UV filter

VL Vision Line which is an all-glass butt-joint glazing system without mullions

Applications

The Pyrobel product range has been tested in a large variety of aluminium, steel, wood & butt-joint systems:



- A Fire-resistant all-glass partitions
- B Fire-resistant glazed doors
- C Fire-resistant curtain walls - facades
- D Fire-resistant floor glazing
- E Fire-resistant roof glazing
- F Fire resistant windows

Why choose Pyrobel Vision Line?



AESTHETICS

The **modern and stylish** Pyrobel Vision Line system meets the needs of designers and architects looking for **glazed solutions without mullions**, also available in large dimensions.



SAFETY

Pyrobel Vision Line is made of **safety glass** according to EN 12600. The glass is fire-resistant on **both sides**.



PROVIDING SOLUTIONS

We support our customers **with our high-level expertise**.



COMFORT

An **unrivalled light transmission** and an **optimal acoustic insulation** for maximal comfort.



QUALITY

With 40 years of experience, Pyrobel Vision Line delivers proven long-term quality.



MADE IN EUROPE



The information and data contained in this document are subject to change without notice.

Questions? Contact our sales team! www.agc-pyrobel.com/contact



PYROBEL 25 VISION LINE

Fire-resistant glass focusing on your safety

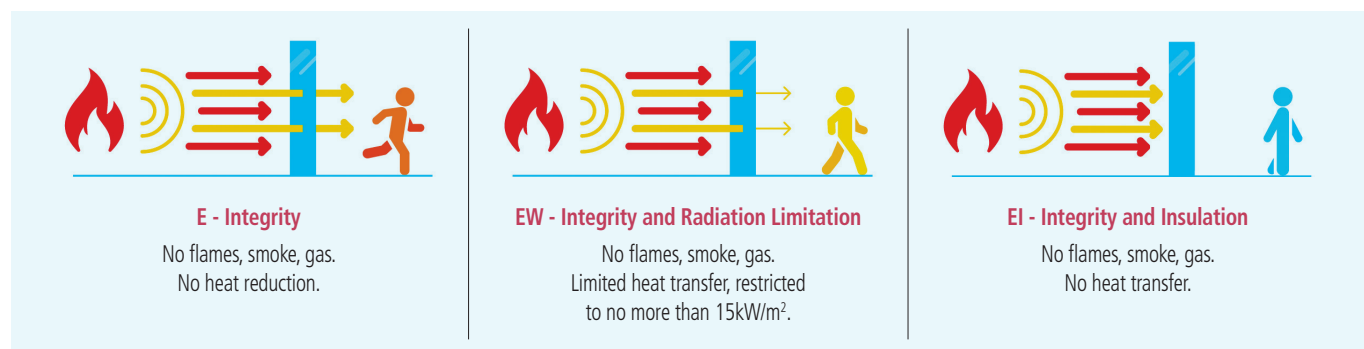


EI60

AGC

Pyrobel 25 Vision Line (VL) is a butt-joined system using multiple Pyrobel fire-resistant glass panes interconnected by means of a 4-5 mm silicone joint, which offers a maximum of light transparency. Pyrobel Vision Line delivers fire-resistant, unbroken walls of glass that ensures a broad field of vision, making it the perfect choice for modern fully glazed partitions. The glass delivers fire protection in both directions according to the standard EN 13501-2.

Pyrobel Vision Line Corner is a version that allows glazing to be installed edge to edge with surfaces at angles ranging from 90° to 180°.



Technical data

Specification / Identification	Pyrobel 25 VL	Pyrobel 25 EG VL	Pyrobel 25 EG2 VL
Glazing type	Single	Single	Single
Grade	Internal	Internal, 1 side UV filter	Internal, 2 sides UV filter
Glass thickness	26,6 mm	30,4 mm	34,1 mm
Thickness tolerances	± 2 mm	± 2 mm	± 2,4 mm
Dimensions tolerances	± 2 mm	± 2 mm	± 2 mm
Weight	ca 60 kg/m²	ca 68 kg/m²	ca 76 kg/m²
Minimum dimensions	No minimum	No minimum	No minimum
Light transmission / Light reflection (%)	82 / 7	82 / 7	78 / 7
CV* Light transmission / Light reflection (%)	88 / 8	87 / 8	87 / 8
U value (EN 673)	5,1 W/(m².K)	5,0 W/(m².K)	4,8 W/(m².K)
Impact resistance (EN 12600)	1B1	1B1	1B1
Burglar resistance (EN 356)	P1A	P2A	NPD**
Sound reduction (EN 12758) Rw (C; Ctr)	40 (-1; -3) dB	43 (-1; -4) dB	44 (-1; -4) dB
Exposure temperatures	-40°C / +50°C		

* Clearvision (CV) optional, low iron extra clear glass by AGC.

** No performance declared, see Glass configurator.

Fire certification

Check out the product selector for availabilities of fire certification on www.agc-pyrobel.com/selector. The installation must be done in compliance with the fire test report. Pyrobel(ite) is extensively tested & approved under different standards: EN, BS, UL, ASTM, NFPA, ...



Your Dreams, Our Challenge

Availability

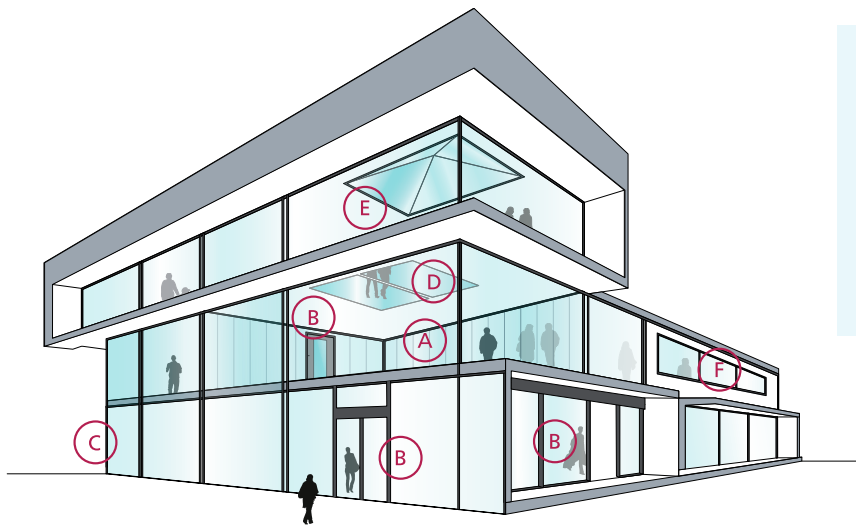
SGU Single glazing unit for internal application

EG External grade version Pyrobel EG is single glazed Pyrobel with a 0,76 mm pvb interlayer and extra glass pane that acts as an UV filter

VL Vision Line which is an all-glass butt-joint glazing system without mullions

Applications

The Pyrobel product range has been tested in a large variety of aluminium, steel, wood & butt-joint systems:



- A Fire-resistant all-glass partitions
- B Fire-resistant glazed doors
- C Fire-resistant curtain walls - facades
- D Fire-resistant floor glazing
- E Fire-resistant roof glazing
- F Fire resistant windows

Why choose Pyrobel Vision Line?



AESTHETICS

The **modern and stylish** Pyrobel Vision Line system meets the needs of designers and architects looking for **glazed solutions without mullions**, also available in large dimensions.



SAFETY

Pyrobel Vision Line is made of **safety glass** according to EN 12600. The glass is fire-resistant on **both sides**.



PROVIDING SOLUTIONS

We support our customers **with our high-level expertise**.



COMFORT

An **unrivalled light transmission** and an **optimal acoustic insulation** for maximal comfort.



QUALITY

With 40 years of experience, Pyrobel Vision Line delivers proven long-term quality.



MADE IN EUROPE



The information and data contained in this document are subject to change without notice.

Questions? Contact our sales team! www.agc-pyrobel.com/contact



PYROBEL 30 EG2 VISION LINE

Fire-resistant glass focusing
on your safety

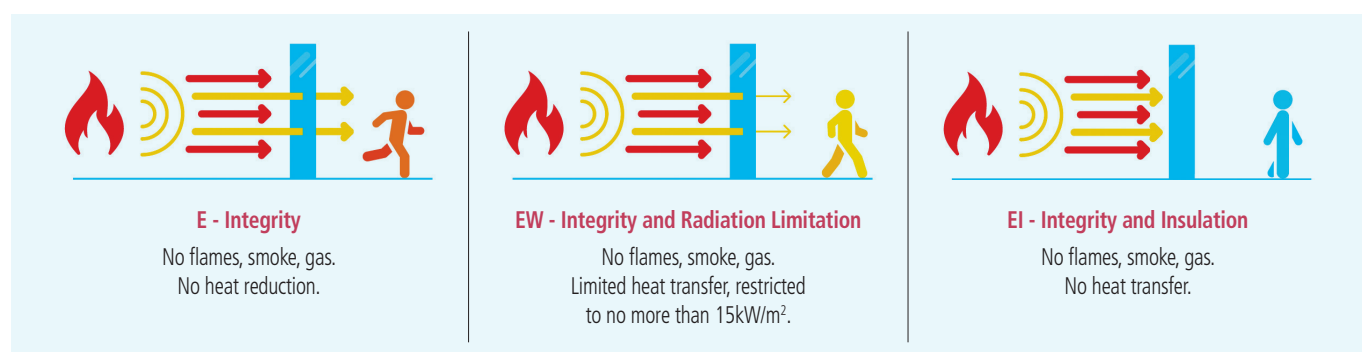


EI90

AGC

Pyrobel 30 EG2 Vision Line (VL) is a butt-joined system using multiple Pyrobel fire-resistant glass panes interconnected by means of a 4-5 mm silicone joint, which offers a maximum of light transparency. Pyrobel Vision Line delivers fire-resistant, unbroken walls of glass that ensures a broad field of vision, making it the perfect choice for modern fully glazed partitions. The glass delivers fire protection in both directions according to the standard EN 13501-2.

Pyrobel Vision Line Corner is a version that allows glazing to be installed edge to edge with surfaces at angles ranging from 90° to 180°.



Technical data

Specification / Identification	Pyrobel 30 EG2 VL
Glazing type	Single
Grade	internal, 2 sides UV filter
Glass thickness	37,5 mm
Thickness tolerances	± 3 mm
Dimensions tolerances	± 2 mm
Weight	ca 85 kg/m²
Minimum dimensions	No minimum
Light transmission / Light reflection (%)	80 / 7
CV* Light transmission / Light reflection (%)	86 / 8
U value (EN 673)	4,8 W/(m².K)
Impact resistance (EN 12600)	1B1
Burglar resistance (EN 356)	P2A
Sound reduction (EN 12758) Rw (C; Ctr)	44 (-1; -4) dB
Exposure temperatures	-40°C / +50°C

* Clearvision (CV) optional, low iron extra clear glass by AGC.

Fire certification

Check out the product selector for availabilities of fire certification on www.agc-pyrobel.com/selector. The installation must be done in compliance with the fire test report. Pyrobel(ite) is extensively tested & approved under different standards: EN, BS, UL, ASTM, NFPA, ...



Your Dreams, Our Challenge

Availability

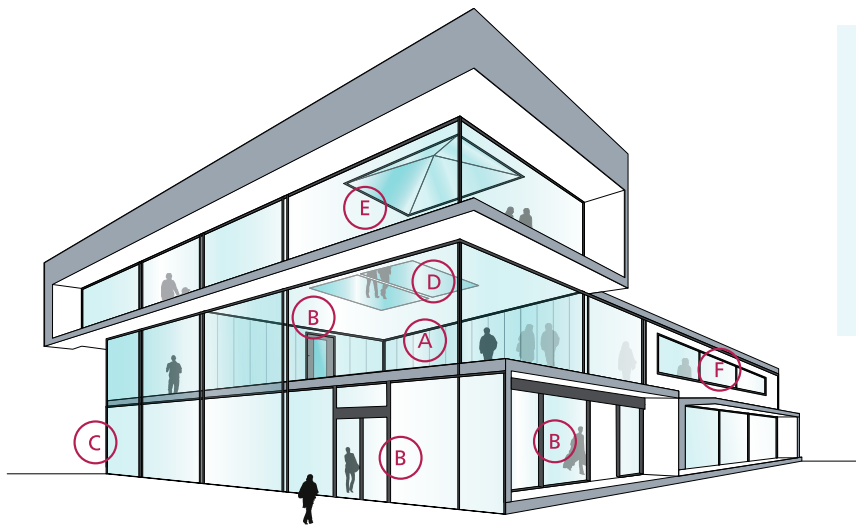
SGU Single glazing unit for internal application

EG External grade version Pyrobel EG is single glazed Pyrobel with a 0,76 mm pvb interlayer and extra glass pane that acts as an UV filter

VL Vision Line which is an all-glass butt-joint glazing system without mullions

Applications

The Pyrobel product range has been tested in a large variety of aluminium, steel, wood & butt-joint systems:



- A Fire-resistant all-glass partitions
- B Fire-resistant glazed doors
- C Fire-resistant curtain walls - facades
- D Fire-resistant floor glazing
- E Fire-resistant roof glazing
- F Fire resistant windows

Why choose Pyrobel Vision Line?



AESTHETICS

The **modern and stylish** Pyrobel Vision Line system meets the needs of designers and architects looking for **glazed solutions without mullions**, also available in large dimensions.



SAFETY

Pyrobel Vision Line is made of **safety glass** according to EN 12600. The glass is fire-resistant on **both sides**.



PROVIDING SOLUTIONS

We support our customers **with our high-level expertise**.



COMFORT

An **unrivalled light transmission** and an **optimal acoustic insulation** for maximal comfort.



QUALITY

With 40 years of experience, Pyrobel Vision Line delivers proven long-term quality.



MADE IN EUROPE



The information and data contained in this document are subject to change without notice.

Questions? Contact our sales team! www.agc-pyrobel.com/contact



PYROBEL 53N VISION LINE

Fire-resistant glass focusing
on your safety

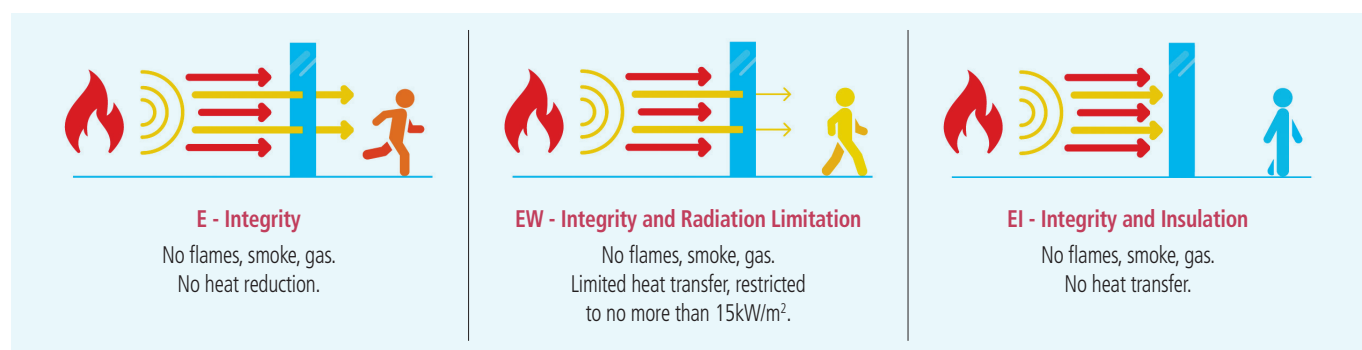


EI120

AGC

Pyrobel 53N Vision Line (VL) is a butt-joined system using multiple Pyrobel fire-resistant glass panes interconnected by means of a 4-5 mm silicone joint, which offers a maximum of light transparency. Pyrobel Vision Line delivers fire-resistant, unbroken walls of glass that ensures a broad field of vision, making it the perfect choice for modern fully glazed partitions. The glass delivers fire protection in both directions according to the standard EN 13501-2.

Pyrobel Vision Line Corner is a version that allows glazing to be installed edge to edge with surfaces at angles ranging from 90° to 180°.



Technical data

Specification / Identification	Pyrobel 53N VL
Glazing type	Single
Grade	Internal
Glass thickness	52,7 mm
Thickness tolerances	± 3 mm
Dimensions tolerances	± 2 mm
Weight	ca 122 kg/m²
Minimum dimensions	No minimum
Light transmission / Light reflection (%)	75 / 7
CV* Light transmission / Light reflection (%)	84 / 8
U value (EN 673)	4,5 W/(m².K)
Impact resistance (EN 12600)	1B1
Burglar resistance (EN356)	P2A
Sound reduction (EN 12758) Rw (C; Ctr)	48 (-2; -7) dB
Exposure temperatures	-40°C / +50°C

* Clearvision (CV) optional, low iron extra clear glass by AGC.

Fire certification

Check out the product selector for availabilities of fire certification on www.agc-pyrobel.com/selector. The installation must be done in compliance with the fire test report. Pyrobel(ite) is extensively tested & approved under different standards: EN, BS, UL, ASTM, NFPA, ...



Your Dreams, Our Challenge

Availability

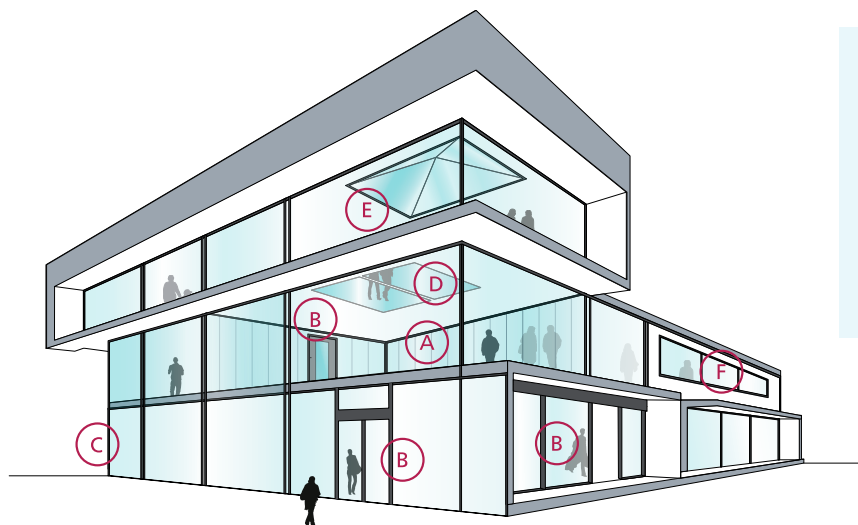
SGU Single glazing unit for internal application

EG External grade version Pyrobel EG is single glazed Pyrobel with a 0,76 mm pvb interlayer and extra glass pane that acts as an UV filter

VL Vision Line which is an all-glass butt-joint glazing system without mullions

Applications

The Pyrobel product range has been tested in a large variety of aluminium, steel, wood & butt-joint systems:



- A Fire-resistant all-glass partitions
- B Fire-resistant glazed doors
- C Fire-resistant curtain walls - facades
- D Fire-resistant floor glazing
- E Fire-resistant roof glazing
- F Fire resistant windows

Why choose Pyrobel Vision Line?



AESTHETICS

The **modern and stylish** Pyrobel Vision Line system meets the needs of designers and architects looking for **glazed solutions without mullions**, also available in large dimensions.



SAFETY

Pyrobel Vision Line is made of **safety glass** according to EN 12600. The glass is fire-resistant on **both sides**.



PROVIDING SOLUTIONS

We support our customers **with our high-level expertise**.



COMFORT

An **unrivalled light transmission** and an **optimal acoustic insulation** for maximal comfort.



QUALITY

With 40 years of experience, Pyrobel Vision Line delivers proven long-term quality.



MADE IN EUROPE



The information and data contained in this document are subject to change without notice.

Questions? Contact our sales team! www.agc-pyrobel.com/contact



PYROBEL 54 VISION LINE

Fire-resistant glass focusing on your safety



EI120

AGC

Pyrobel 54 Vision Line (VL) is a butt-joined system using multiple Pyrobel fire-resistant glass panes interconnected by means of a 4-5 mm silicone joint, which offers a maximum of light transparency. Pyrobel Vision Line delivers fire-resistant, unbroken walls of glass that ensures a broad field of vision, making it the perfect choice for modern fully glazed partitions. The glass delivers fire protection in both directions according to the standard EN 13501-2.

Pyrobel Vision Line Corner is a version that allows glazing to be installed edge to edge with surfaces at angles ranging from 90° to 180°.



E - Integrity

No flames, smoke, gas.
No heat reduction.



EW - Integrity and Radiation Limitation

No flames, smoke, gas.
Limited heat transfer, restricted to no more than 15kW/m².



EI - Integrity and Insulation

No flames, smoke, gas.
No heat transfer.

Technical data

Specification / Identification	Pyrobel 54 VL
Glazing type	Single
Grade	Internal
Glass thickness	54 mm
Thickness tolerances	± 3 mm
Dimensions tolerances	± 2 mm
Weight	ca 124 kg/m²
Minimum dimensions	No minimum
Light transmission / Light reflection (%)	75 / 7
CV* Light transmission / Light reflection (%)	83 / 7
U value (EN 673)	4,4 W/(m².K)
Impact resistance (EN 12600)	1B1
Burglar resistance (EN 356)	P2A
Sound reduction (EN 12758) Rw (C; Ctr)	49 (-1; -4)
Exposure temperatures	-40°C / +50°C

* Clearvision (CV) optional, low iron extra clear glass by AGC.

Fire certification

Check out the product selector for availabilities of fire certification on www.agc-pyrobel.com/selector. The installation must be done in compliance with the fire test report. Pyrobel(ite) is extensively tested & approved under different standards: EN, BS, UL, ASTM, NFPA, ...



Your Dreams, Our Challenge

Availability

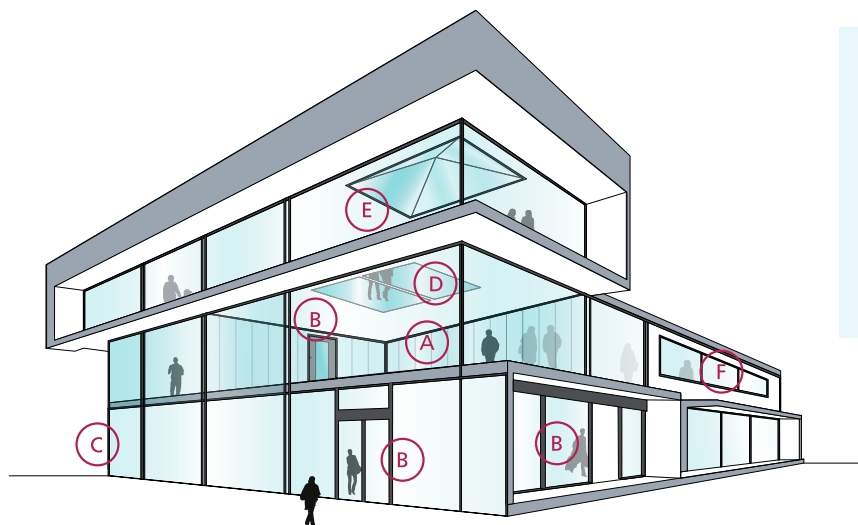
SGU Single glazing unit for internal application

EG External grade version Pyrobel EG is single glazed Pyrobel with a 0,76 mm pvb interlayer and extra glass pane that acts as an UV filter

VL Vision Line which is an all-glass butt-joint glazing system without mullions

Applications

The Pyrobel product range has been tested in a large variety of aluminium, steel, wood & butt-joint systems:



- A Fire-resistant all-glass partitions
- B Fire-resistant glazed doors
- C Fire-resistant curtain walls - facades
- D Fire-resistant floor glazing
- E Fire-resistant roof glazing
- F Fire-resistant windows

Why choose Pyrobel Vision Line?



AESTHETICS

The **modern and stylish** Pyrobel Vision Line system meets the needs of designers and architects looking for **glazed solutions without mullions**, also available in large dimensions.



SAFETY

Pyrobel Vision Line is made of **safety glass** according to EN 12600. The glass is fire-resistant on **both sides**.



PROVIDING SOLUTIONS

We support our customers **with our high-level expertise**.



COMFORT

An **unrivalled light transmission** and an **optimal acoustic insulation** for maximal comfort.



QUALITY

With 40 years of experience, Pyrobel Vision Line delivers proven long-term quality.



MADE IN EUROPE



The information and data contained in this document are subject to change without notice.

Questions? Contact our sales team! www.agc-pyrobel.com/contact



PYROBEL 19H HORIZONTAL

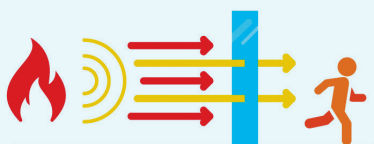
Fire-resistant glass focusing
on your safety



EW30/EI30

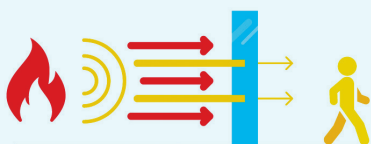
AGC

Pyrobel 19H is a laminated glass assembled with sheets of glass and fire-resistant clear intumescent interlayers. In the event of fire, the interlayers transform into rigid and opaque fire shields, that keep out flames, limit the heat transfer through the glazing and reduce strongly the temperature on the protected surface of the Pyrobel glass. Pyrobel 19H is designed to be applied in internal and external horizontal or sloped constructions and provide fire resistance according to EN 13501-2.



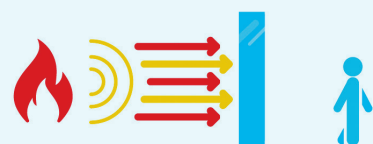
E - Integrity

No flames, smoke, gas.
No heat reduction.



EW - Integrity and Radiation Limitation

No flames, smoke, gas.
Limited heat transfer, restricted
to no more than 15kW/m².



EI - Integrity and Insulation

No flames, smoke, gas.
No heat transfer.

Technical data

Specification / Identification	Pyrobel 19H	Pyrobel 19H IGU
Glazing type	Single	Double (or triple) Glazing Unit
Grade	Internal, 1 side UV filter	External with UV filter
Glass Thickness	19,1 mm	Consult the Glass Configurator: www.agc-yourglass.com/ configurator
Thickness Tolerances	+/- 1,5 mm	
Dimensions tolerances	+/- 2 mm	
Weight	Ca 43 Kg/m²	
Minimum dimensions	No minimum	
Light transmission / Light reflection (%)	85 / 8	
U value (EN 673)	5,2 W/(m².K)	
Impact resistance (EN 12600)	1B1	
Sound reduction (EN 12758) Rw (C; Ctr)	38 (-1; -3) dB	
Exposure temperatures	-40°C / +50°C	

Fire certification

Check out the product selector for availabilities of fire certification on www.agc-pyrobel.com/selector.
The installation must be done in compliance with the fire test report.



Your Dreams, Our Challenge

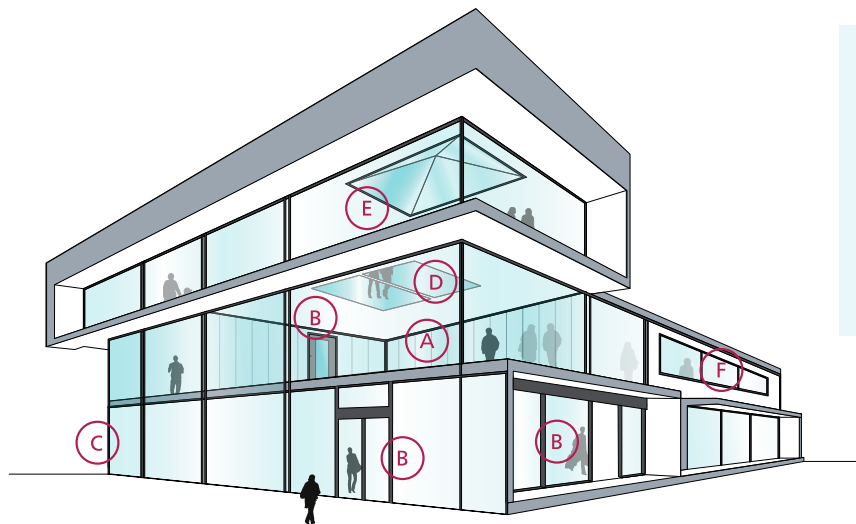
Availability

- SGU** Single glazing unit for internal application
- IGU** Insulated glazing unit for outdoor applications (double or triple glazing)

SPS Special products and combinations such as bulletproof and burglar resistant glass

Applications

The Pyrobel product range has been tested in a large variety of aluminium, steel, wood & butt-joint systems:



- A Fire-resistant all-glass partitions
- B Fire-resistant glazed doors
- C Fire-resistant curtain walls - facades
- D Fire-resistant floor glazing
- E Fire-resistant roof glazing
- F Fire resistant windows

Why choose Pyrobel(ite)?



THE SHORTEST DELIVERY TIMES

Since Pyrobel(ite) **can be cut** by our network of distributors, they can supply you with what you need **quickly and efficiently**.



CRADLE TO CRADLE CERTIFIED

Pyrobel(ite) is **Cradle to Cradle Certified™ Silver**.



PROVIDING SOLUTIONS

We support our customers **with our high-level expertise**.



ACOUSTIC INSULATION

Pyrobel(ite) has excellent **acoustic insulation properties**.



QUALITY

With 40 years of experience, Pyrobel delivers proven long-term quality. Pyrobel(ite) glass has an excellent optical quality supported by a **10-year warranty**.



MADE IN EUROPE



The information and data contained in this document are subject to change without notice.

Questions? Contact our sales team! www.agc-pyrobel.com/contact



PYROBEL 23H HORIZONTAL

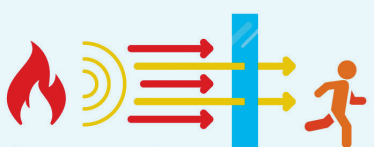
Fire-resistant glass focusing
on your safety



EI30

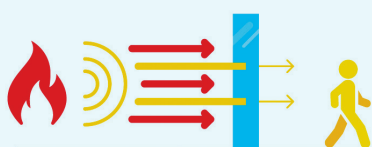
AGC

Pyrobel 23H is a laminated glass assembled with sheets of glass and fire-resistant clear intumescent interlayers. In the event of fire, the interlayers transform into rigid and opaque fire shields, that keep out flames, limit the heat transfer through the glazing and reduce strongly the temperature on the protected surface of the Pyrobel glass. Pyrobel 23H is designed to be applied in internal and external horizontal or sloped constructions and provide fire-resistance according to EN 13501-2.



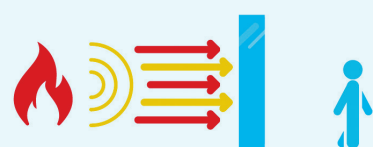
E - Integrity

No flames, smoke, gas.
No heat reduction.



EW - Integrity and Radiation Limitation

No flames, smoke, gas.
Limited heat transfer, restricted
to no more than 15kW/m².



EI - Integrity and Insulation

No flames, smoke, gas.
No heat transfer.

Technical data

Specification / Identification	Pyrobel 23H	Pyrobel 23H IGU
Glazing type	Single	Double (or triple) Glazing Unit
Grade	Internal, 1 side UV filter	External with UV filter
Glass Thickness	23,7 mm	Consult the Glass Configurator: www.agc-yourglass.com/ configurator
Thickness Tolerances	+/- 1,8 mm	
Dimensions tolerances	+/- 2 mm	
Weight	Ca 54 Kg/m²	
Minimum dimensions	No minimum	
Light transmission / Light reflection (%)	83 / 8	
U value (EN 673)	5,1 W/(m².K)	
Impact resistance (EN 12600)	1B1	
Sound reduction (EN 12758) Rw(C;Ctr)	39 (0 ; -3) dB	
Exposure temperatures	-40°C / +50°C	

Fire certification

Check out the product selector for availabilities of fire certification on www.agc-pyrobel.com/selector.
The installation must be done in compliance with the fire test report.



Your Dreams, Our Challenge

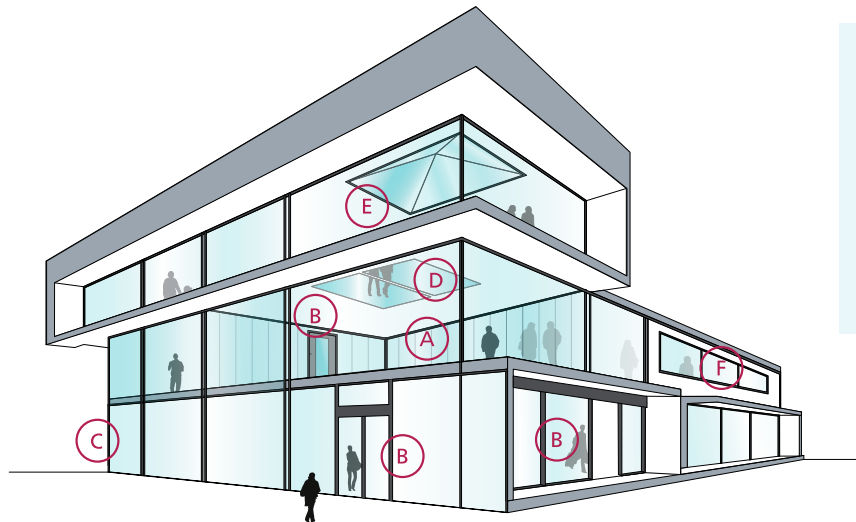
Availability

- SGU** Single glazing unit for internal application
- IGU** Insulated glazing unit for outdoor applications (double or triple glazing)

SPS Special products and combinations such as bulletproof and burglar resistant glass

Applications

The Pyrobel product range has been tested in a large variety of aluminium, steel, wood & butt-joint systems:



- A Fire-resistant all-glass partitions
- B Fire-resistant glazed doors
- C Fire-resistant curtain walls - facades
- D Fire-resistant floor glazing
- E Fire-resistant roof glazing
- F Fire resistant windows

Why choose Pyrobel(ite)?



THE SHORTEST DELIVERY TIMES

Since Pyrobel(ite) **can be cut** by our network of distributors, they can supply you with what you need **quickly and efficiently**.



CRADLE TO CRADLE CERTIFIED

Pyrobel(ite) is **Cradle to Cradle Certified™ Silver**.



PROVIDING SOLUTIONS

We support our customers **with our high-level expertise**.



ACOUSTIC INSULATION

Pyrobel(ite) has excellent **acoustic insulation properties**.



QUALITY

With 40 years of experience, Pyrobel delivers proven long-term quality. Pyrobel(ite) glass has an excellent optical quality supported by a **10-year warranty**.



MADE IN EUROPE



The information and data contained in this document are subject to change without notice.

Questions? Contact our sales team! www.agc-pyrobel.com/contact



PYROBEL 28H HORIZONTAL

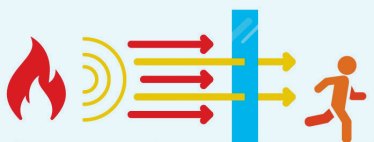
Fire-resistant glass focusing
on your safety



E60/EI60

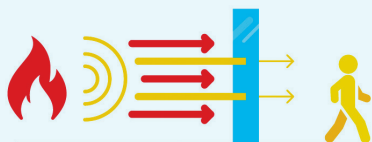
AGC

Pyrobel 28H is a laminated glass assembled with sheets of glass and fire-resistant clear intumescent interlayers. In the event of fire, the interlayers transform into rigid and opaque fire shields, that keep out flames, limit the heat transfer through the glazing and reduce strongly the temperature on the protected surface of the Pyrobel glass. Pyrobel 28H is designed to be applied in internal and external horizontal or sloped constructions and provide fire-resistance according to EN 13501-2.



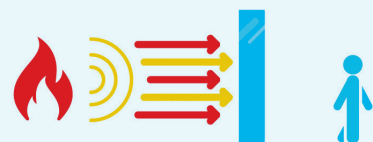
E - Integrity

No flames, smoke, gas.
No heat reduction.



EW - Integrity and Radiation Limitation

No flames, smoke, gas.
Limited heat transfer, restricted
to no more than 15kW/m².



EI - Integrity and Insulation

No flames, smoke, gas.
No heat transfer.

Technical data

Specification / Identification	Pyrobel 28H	Pyrobel 28H IGU
Glazing type	Single	Double (or triple) Glazing Unit
Grade	Internal, 1 side UV filter	External with UV filter
Glass Thickness	28,4 mm	Consult the Glass Configurator: www.agc-yourglass.com/ configurator
Thickness Tolerances	+/- 2 mm	
Dimensions tolerances	+/- 2 mm	
Weight	Ca 63 Kg/m²	
Minimum dimensions	No minimum	
Light transmission / Light reflection (%)	78 / 7	
U value (EN 673)	5,0 W/(m².K)	
Impact resistance (EN 12600)	1B1	
Sound reduction (EN 12758) Rw(C; Ctr)	41 (0 ; -3) dB	
Exposure temperatures	-40°C / +50°C	

Fire certification

Check out the product selector for availabilities of fire certification on www.agc-pyrobel.com/selector.
The installation must be done in compliance with the fire test report.



Your Dreams, Our Challenge

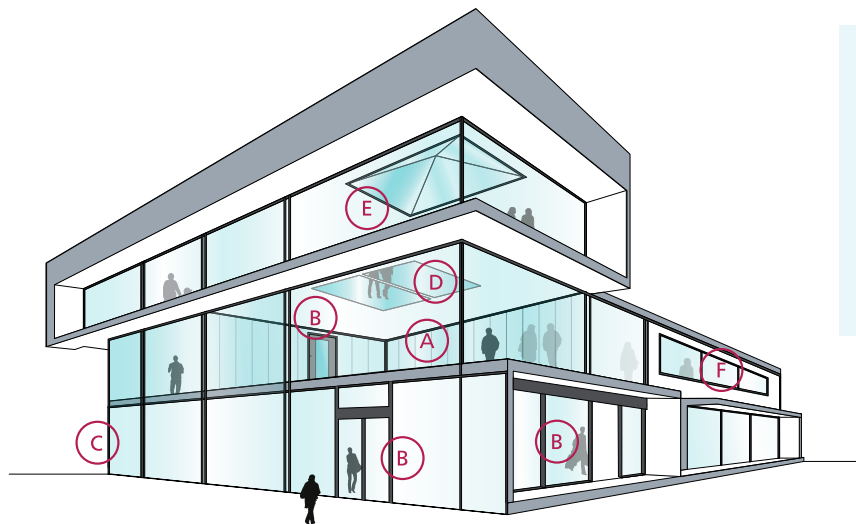
Availability

- SGU** Single glazing unit for internal application
- IGU** Insulated glazing unit for outdoor applications (double or triple glazing)

SPS Special products and combinations such as bulletproof and burglar resistant glass

Applications

The Pyrobel product range has been tested in a large variety of aluminium, steel, wood & butt-joint systems:



- A Fire-resistant all-glass partitions
- B Fire-resistant glazed doors
- C Fire-resistant curtain walls - facades
- D Fire-resistant floor glazing
- E Fire-resistant roof glazing
- F Fire resistant windows

Why choose Pyrobel(ite)?



THE SHORTEST DELIVERY TIMES

Since Pyrobel(ite) **can be cut** by our network of distributors, they can supply you with what you need **quickly and efficiently**.



CRADLE TO CRADLE CERTIFIED

Pyrobel(ite) is **Cradle to Cradle Certified™ Silver**.



PROVIDING SOLUTIONS

We support our customers **with our high-level expertise**.



ACOUSTIC INSULATION

Pyrobel(ite) has excellent **acoustic insulation properties**.



QUALITY

With 40 years of experience, Pyrobel delivers proven long-term quality. Pyrobel(ite) glass has an excellent optical quality supported by a **10-year warranty**.



MADE IN EUROPE



The information and data contained in this document are subject to change without notice.

Questions? Contact our sales team! www.agc-pyrobel.com/contact



PYROBEL 33H HORIZONTAL

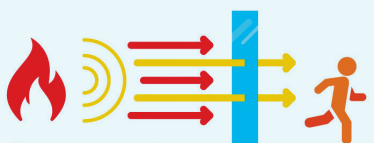
Fire-resistant glass focusing
on your safety



EI60

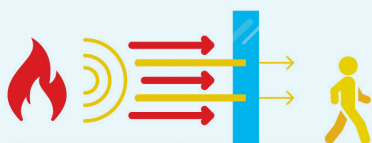
AGC

Pyrobel 33H is a laminated glass assembled with sheets of glass and fire-resistant clear intumescent interlayers. In the event of fire, the interlayers transform into rigid and opaque fire shields, that keep out flames, limit the heat transfer through the glazing and reduce strongly the temperature on the protected surface of the Pyrobel glass. Pyrobel 33H is designed to be applied in internal and external horizontal or sloped constructions and provide fire-resistance according to EN 13501-2.



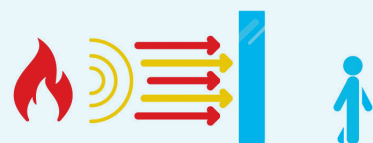
E - Integrity

No flames, smoke, gas.
No heat reduction.



EW - Integrity and Radiation Limitation

No flames, smoke, gas.
Limited heat transfer, restricted
to no more than 15kW/m².



EI - Integrity and Insulation

No flames, smoke, gas.
No heat transfer.

Technical data

Specification / Identification	Pyrobel 33H	Pyrobel 33H IGU
Glazing type	Single	Double (or triple) Glazing Unit
Grade	Internal, 1 side UV filter	External with UV filter
Glass Thickness	33,2 mm	Consult the Glass Configurator: www.agc-yourglass.com/ configurator
Thickness Tolerances	+/- 2,5 mm	
Dimensions tolerances	+/- 2 mm	
Weight	Ca 77 Kg/m²	
Minimum dimensions	No minimum	
Light transmission / Light reflection (%)	80 / 7	
U value (EN 673)	4,9 W/(m².K)	
Impact resistance (EN 12600)	1B1	
Burglar resistance (EN 356)	P2A	
Sound reduction (EN 12758) Rw(C; Ctr)	44 (-1 ; -4) dB	
Exposure temperatures	-40°C / +50°C	

Fire certification

Check out the product selector for availabilities of fire certification on www.agc-pyrobel.com/selector.
The installation must be done in compliance with the fire test report.



Your Dreams, Our Challenge

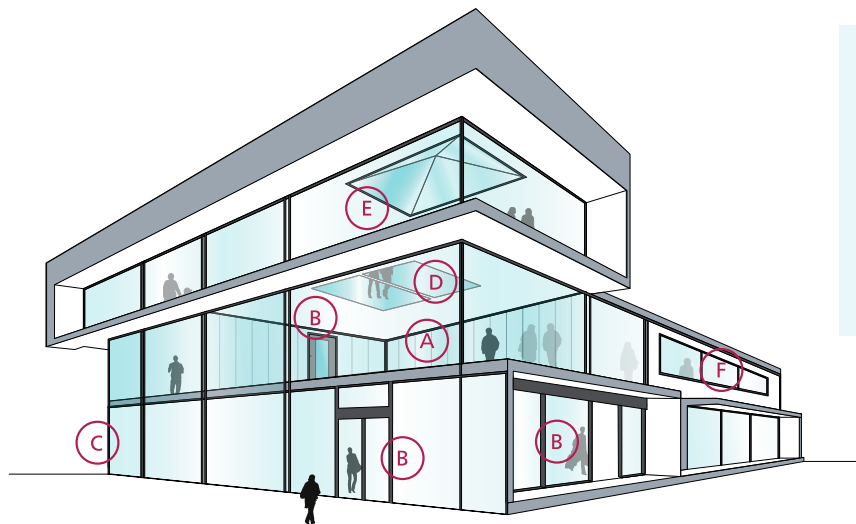
Availability

- SGU** Single glazing unit for internal application
- IGU** Insulated glazing unit for outdoor applications (double or triple glazing)

SPS Special products and combinations such as bulletproof and burglar resistant glass

Applications

The Pyrobel product range has been tested in a large variety of aluminium, steel, wood & butt-joint systems:



- A Fire-resistant all-glass partitions
- B Fire-resistant glazed doors
- C Fire-resistant curtain walls - facades
- D Fire-resistant floor glazing
- E Fire-resistant roof glazing
- F Fire resistant windows

Why choose Pyrobel(ite)?



THE SHORTEST DELIVERY TIMES

Since Pyrobel(ite) **can be cut** by our network of distributors, they can supply you with what you need **quickly and efficiently**.



CRADLE TO CRADLE CERTIFIED

Pyrobel(ite) is **Cradle to Cradle Certified™ Silver**.



PROVIDING SOLUTIONS

We support our customers **with our high-level expertise**.



ACOUSTIC INSULATION

Pyrobel(ite) has excellent **acoustic insulation properties**.



QUALITY

With 40 years of experience, Pyrobel delivers proven long-term quality. Pyrobel(ite) glass has an excellent optical quality supported by a **10-year warranty**.



MADE IN EUROPE



The information and data contained in this document are subject to change without notice.

Questions? Contact our sales team! www.agc-pyrobel.com/contact



PYROBEL-T

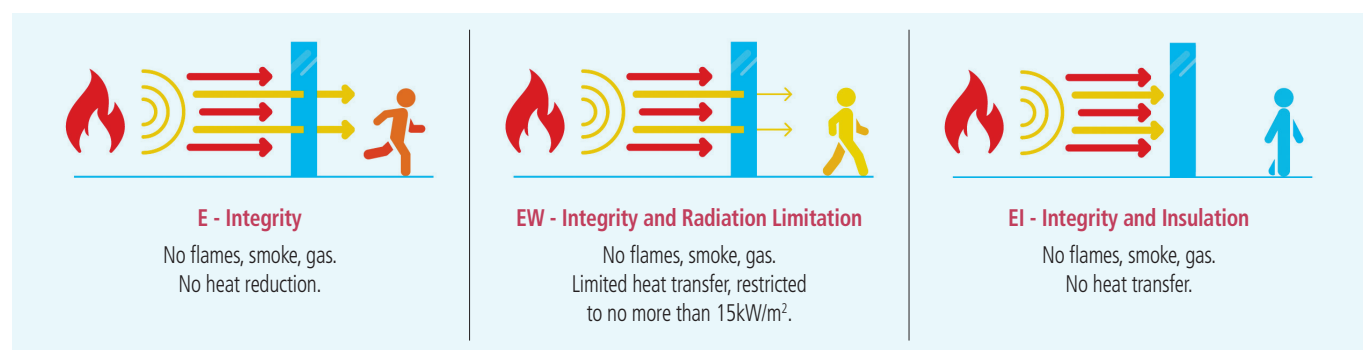
EW30

AGC

Fire-resistant glass focusing
on your safety



Pyrobel -T EW30 is an assembly of toughened sheets of glass, combined with fire-resistant clear intumescent interlayer(s). In the event of fire, the interlayer(s) transform into rigid and opaque fire shield(s), that keep out flames and limit the heat transmission through the glazing. Every single tempered glass pane constituting the Pyrobel-T undergoes a Heat Soak Test. Pyrobel-T is a technology for XXL fire-resistant glass up to 4,5m high. The glass delivers fire protection in both directions according to the standard EN 13501-2.



Technical data

Specification / Identification	Pyrobel-T EW30-16	Pyrobel-T EW30-20	Pyrobel-T EW30 IGU
Glazing type	Single	Single	Double (or triple) Glazing Unit
Grade	Internal, UV resistant	Internal, UV resistant	External, UV resistant
Glass thickness	16,0 mm	20,0 mm	Consult the Glass Configurator: www.agc-yourglass.com/ configurator
Thickness tolerances	± 1,0 mm	± 1,2 mm	
Dimensions tolerances	± 2 mm	± 2 mm	
Weight	ca 36 kg/m ²	ca 46 kg/m ²	
Max dimensions	2,0 x 4,5 m	2,0 x 4,5 m	
Minimum dimensions	0,2 x 0,35 m	0,2 x 0,35 m	
Light transmission / Light reflection (%)	87 / 8	86 / 8	
U value (EN 673)	5,4 W/(m ² .K)	5,3 W/(m ² .K)	
Impact resistance (EN 12600)	1B1	1B1	
Sound reduction (EN 12758) Rw (C; Ctr)	37 (-1; -2) dB	37 (-1; -3) dB	
Exposure temperatures	-10°C / + 50°C		

Fire certification

Check out the product selector for availabilities of fire certification on www.agc-pyrobel.com/selector.
The installation must be done in compliance with the fire test report.



Your Dreams, Our Challenge

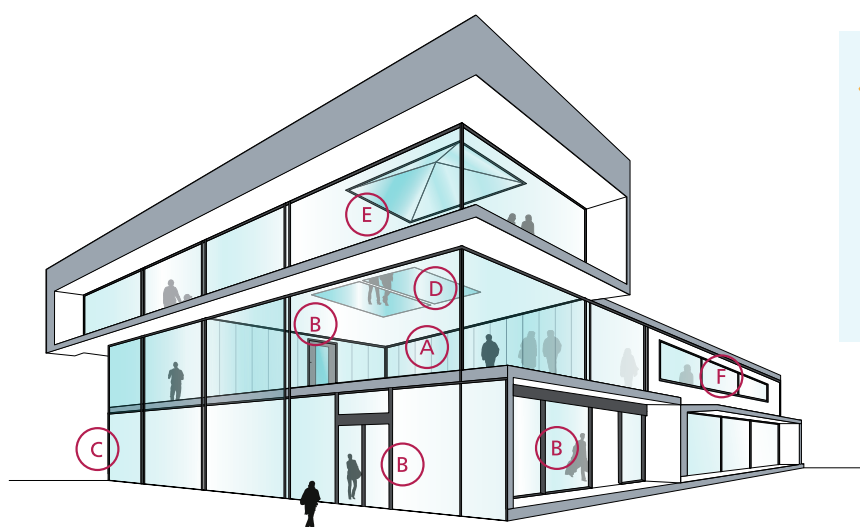
Availability

- SGU** Single glazing unit for internal application
- IGU** Insulated glazing unit for outdoor applications (double or triple glazing)
- SPS** Special products and combinations such as bulletproof and burglar resistant glass

VL Vision Line which is an all-glass butt-joint glazing system without mullions. Separate technical data sheets are available for this range of products

Applications

The Pyrobel-T product range has been tested in a large variety of aluminium, steel, wood & butt-joint systems:



- A Fire-resistant all-glass partitions
- B Fire-resistant glazed doors
- C Fire-resistant curtain walls - facades
- D Fire-resistant floor glazing
- E Fire-resistant roof glazing
- F Fire resistant windows

Why choose Pyrobel-T?



XXL SIZE

The fire-resistant Pyrobel-T glass can be delivered in **very large sizes**.



100% HEAT SOAK TESTED

Many spontaneous breakages of tempered glass are caused by nickel sulphide inclusions (NiS). The Heat Soak Test (HST) **excludes panes likely to suffer breakages**. 100% of the tempered glass panes constituting the Pyrobel-T are passing the Heat Soak Test.



PROVIDING SOLUTIONS

We support our customers **with our high-level expertise**.



RESISTANT

In addition to its excellent fire resistance performance, **Pyrobel-T provides resistance to impacts, water and UV rays**.



SUPERB TRANSPARENCY

Pyrobel-T glasses have an **exceptional light transmission**.



MADE IN EUROPE



The information and data contained in this document are subject to change without notice.

Questions? Contact our sales team! www.agc-pyrobel.com/contact



PYROBEL-T

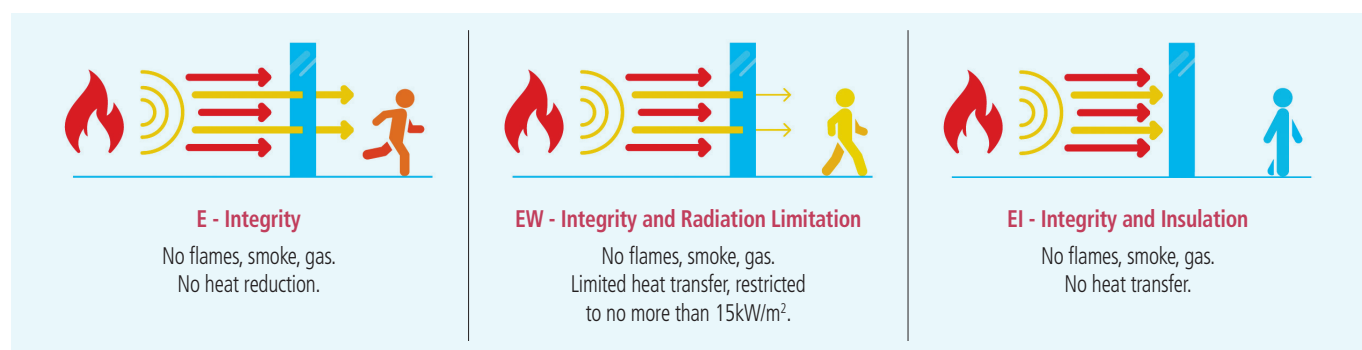
EW60

AGC

Fire-resistant glass focusing
on your safety



Pyrobel -T EW60 is an assembly of toughened sheets of glass, combined with fire-resistant clear intumescent interlayer(s). In the event of fire, the interlayer(s) transform into rigid and opaque fire shield(s), that keep out flames and limit the heat transmission through the glazing. Every single tempered glass pane constituting the Pyrobel-T undergoes a Heat Soak Test. Pyrobel-T is a technology for XXL fire-resistant glass up to 4,5m high. The glass delivers fire protection in both directions according to the standard EN 13501-2.



Technical data

Specification / Identification	Pyrobel-T EW60-16	Pyrobel-T EW60-20
Glazing type	Single	Single
Grade	Internal, UV resistant	Internal, UV resistant
Glass thickness	16,0 mm	20,0 mm
Thickness tolerances	± 1,0 mm	± 1,2 mm
Dimensions tolerances	± 2 mm	± 2 mm
Weight	ca 36 kg/m ²	ca 46 kg/m ²
Max dimensions	2,0 x 4,5 m	2,0 x 4,5 m
Minimum dimensions	0,2 x 0,35 m	0,2 x 0,35 m
Light transmission / Light reflection (%)	87 / 8	86 / 8
U value (EN 673)	5,4 W/(m ² .K)	5,3 W/(m ² .K)
Impact resistance (EN 12600)	1B1	1B1
Sound reduction (EN 12758) Rw (C; Ctr)	37 (-1; -2) dB	37 (-1; -3) dB
Exposure temperatures	-10°C / +50°C	

Fire certification

Check out the product selector for availabilities of fire certification on www.agc-pyrobel.com/selector.
The installation must be done in compliance with the fire test report.

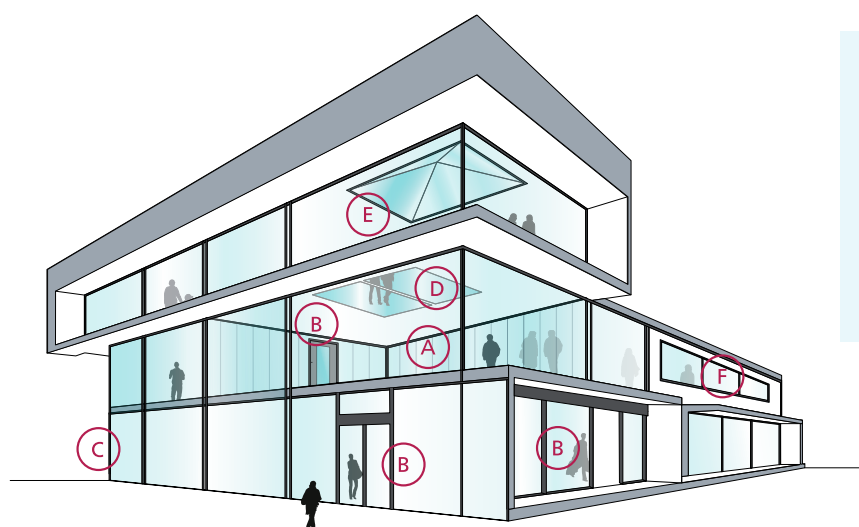
Availability

- SGU** Single glazing unit for internal application
- IGU** Insulated glazing unit for outdoor applications (double or triple glazing)
- SPS** Special products and combinations such as bulletproof and burglar resistant glass

VL Vision Line which is an all-glass butt-joint glazing system without mullions. Separate technical data sheets are available for this range of products

Applications

The Pyrobel-T product range has been tested in a large variety of aluminium, steel, wood & butt-joint systems:



- A Fire-resistant all-glass partitions
- B Fire-resistant glazed doors
- C Fire-resistant curtain walls - facades
- D Fire-resistant floor glazing
- E Fire-resistant roof glazing
- F Fire resistant windows

Why choose Pyrobel-T?



XXL SIZE

The fire-resistant Pyrobel-T glass can be delivered in **very large sizes**.



100% HEAT SOAK TESTED

Many spontaneous breakages of tempered glass are caused by nickel sulphide inclusions (NiS). The Heat Soak Test (HST) **excludes panes likely to suffer breakages**. 100% of the tempered glass panes constituting the Pyrobel-T are passing the Heat Soak Test.



PROVIDING SOLUTIONS

We support our customers **with our high-level expertise**.



RESISTANT

In addition to its excellent fire resistance performance, **Pyrobel-T provides resistance to impacts, water and UV rays**.



SUPERB TRANSPARENCY

Pyrobel-T glasses have an **exceptional light transmission**.



MADE IN EUROPE



The information and data contained in this document are subject to change without notice.

Questions? Contact our sales team! www.agc-pyrobel.com/contact



PYROBEL-T

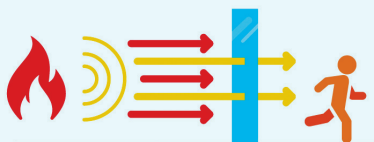
EW90

AGC

Fire-resistant glass focusing
on your safety

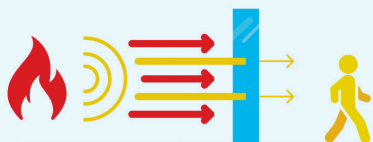


Pyrobel -T EW90 is an assembly of toughened sheets of glass, combined with fire-resistant clear intumescent interlayer(s). In the event of fire, the interlayer(s) transform into rigid and opaque fire shield(s), that keep out flames and limit the heat transmission through the glazing. Every single tempered glass pane constituting the Pyrobel-T undergoes a Heat Soak Test. Pyrobel-T is a technology for XXL fire-resistant glass up to 4,5m high. The glass delivers fire protection in both directions according to the standard EN 13501-2.



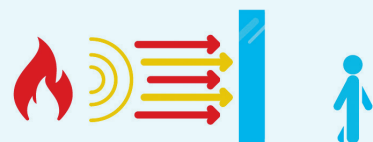
E - Integrity

No flames, smoke, gas.
No heat reduction.



EW - Integrity and Radiation Limitation

No flames, smoke, gas.
Limited heat transfer, restricted
to no more than 15kW/m².



EI - Integrity and Insulation

No flames, smoke, gas.
No heat transfer.

Technical data

Specification / Identification	Pyrobel-T EW90-16	Pyrobel-T EW90-20
Glazing type	Single	Single
Grade	Internal, UV resistant	Internal, UV resistant
Glass thickness	16,0 mm	20,0 mm
Thickness tolerances	± 1,0 mm	± 1,2 mm
Dimensions tolerances	± 2 mm	± 2 mm
Weight	ca 36 kg/m ²	ca 46 kg/m ²
Max dimensions	2,0 x 4,5 m	2,0 x 4,5 m
Minimum dimensions	0,2 x 0,35 m	0,2 x 0,35 m
Light transmission / Light reflection (%)	87 / 8	86 / 8
U value (EN 673)	5,4 W/(m ² .K)	5,3 W/(m ² .K)
Impact resistance (EN 12600)	1B1	1B1
Sound reduction (EN 12758) Rw (C; Ctr)	37 (-1; -2) dB	37 (-1; -3) dB
Exposure temperatures	-10°C / +50°C	

Fire certification

Check out the product selector for availabilities of fire certification on www.agc-pyrobel.com/selector.
The installation must be done in compliance with the fire test report.



Your Dreams, Our Challenge

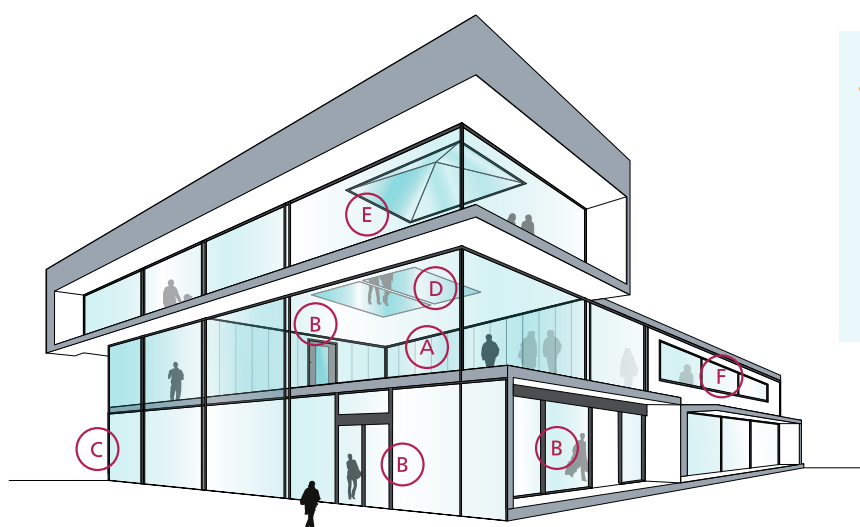
Availability

- SGU** Single glazing unit for internal application
- IGU** Insulated glazing unit for outdoor applications (double or triple glazing)
- SPS** Special products and combinations such as bulletproof and burglar resistant glass

VL Vision Line which is an all-glass butt-joint glazing system without mullions. Separate technical data sheets are available for this range of products

Applications

The Pyrobel-T product range has been tested in a large variety of aluminium, steel, wood & butt-joint systems:



- A Fire-resistant all-glass partitions
- B Fire-resistant glazed doors
- C Fire-resistant curtain walls - facades
- D Fire-resistant floor glazing
- E Fire-resistant roof glazing
- F Fire resistant windows

Why choose Pyrobel-T?



XXL SIZE

The fire-resistant Pyrobel-T glass can be delivered in **very large sizes**.



100% HEAT SOAK TESTED

Many spontaneous breakages of tempered glass are caused by nickel sulphide inclusions (NiS). The Heat Soak Test (HST) **excludes panes likely to suffer breakages**. 100% of the tempered glass panes constituting the Pyrobel-T are passing the Heat Soak Test.



PROVIDING SOLUTIONS

We support our customers **with our high-level expertise**.



RESISTANT

In addition to its excellent fire resistance performance, **Pyrobel-T provides resistance to impacts, water and UV rays**.



SUPERB TRANSPARENCY

Pyrobel-T glasses have an **exceptional light transmission**.



MADE IN EUROPE



The information and data contained in this document are subject to change without notice.

Questions? Contact our sales team! www.agc-pyrobel.com/contact



PYROBEL-T

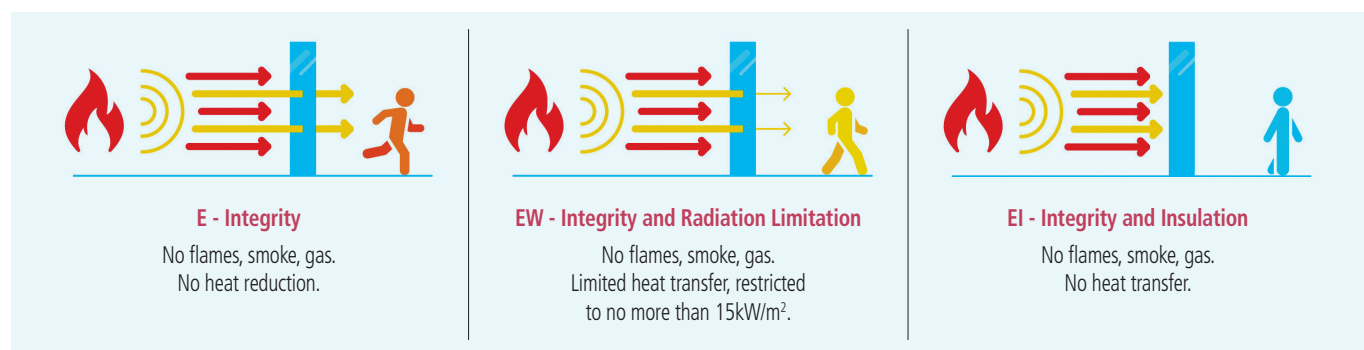
EW120

AGC

Fire-resistant glass focusing
on your safety



Pyrobel -T EW120 is an assembly of toughened sheets of glass, combined with fire-resistant clear intumescent interlayer(s). In the event of fire, the interlayer(s) transform into rigid and opaque fire shield(s), that keep out flames and limit the heat transmission through the glazing. Every single tempered glass pane constituting the Pyrobel-T undergoes a Heat Soak Test. Pyrobel-T is a technology for XXL fire-resistant glass up to 4,5m high. The glass delivers fire protection in both directions according to the standard EN 13501-2.



Technical data

Specification / Identification	Pyrobel-T EW120-16	Pyrobel-T EW120-20
Glazing type	Single	Single
Grade	Internal, UV resistant	Internal, UV resistant
Glass thickness	16,0 mm	20,0 mm
Thickness tolerances	± 1,0 mm	± 1,2 mm
Dimensions tolerances	± 2 mm	± 2 mm
Weight	ca 36 kg/m ²	ca 46 kg/m ²
Max dimensions	2,0 x 4,5 m	2,0 x 4,5 m
Minimum dimensions	0,2 x 0,35 m	0,2 x 0,35 m
Light transmission / Light reflection (%)	87 / 8	86 / 8
U value (EN 673)	5,4 W/(m ² .K)	5,3 W/(m ² .K)
Impact resistance (EN 12600)	1B1	1B1
Sound reduction (EN 12758) Rw (C; Ctr)	37 (-1; -2) dB	37 (-1; -3) dB
Exposure temperatures	-10°C / +50°C	

Fire certification

Check out the product selector for availabilities of fire certification on www.agc-pyrobel.com/selector.
The installation must be done in compliance with the fire test report.



Your Dreams, Our Challenge

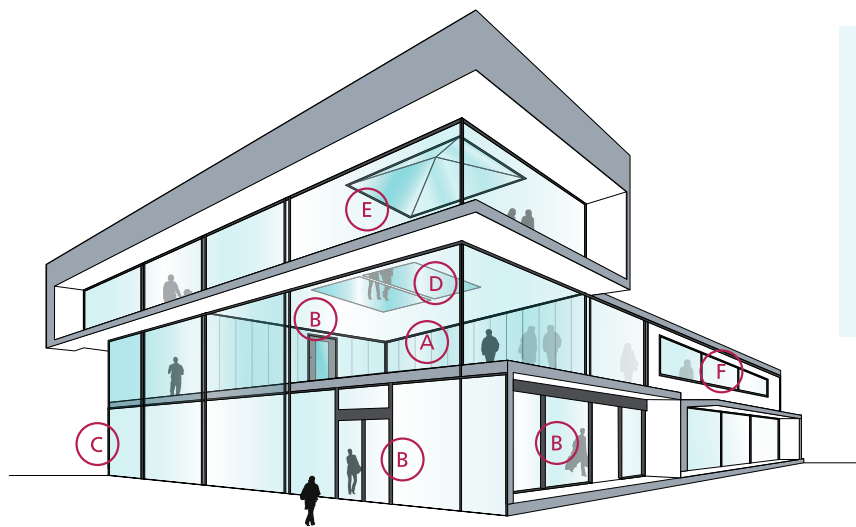
Availability

- SGU** Single glazing unit for internal application
- IGU** Insulated glazing unit for outdoor applications (double or triple glazing)
- SPS** Special products and combinations such as bulletproof and burglar resistant glass

- VL** Vision Line which is an all-glass butt-joint glazing system without mullions. Separate technical data sheets are available for this range of products

Applications

The Pyrobel-T product range has been tested in a large variety of aluminium, steel, wood & butt-joint systems:



- A Fire-resistant all-glass partitions
- B Fire-resistant glazed doors
- C Fire-resistant curtain walls - facades
- D Fire-resistant floor glazing
- E Fire-resistant roof glazing
- F Fire resistant windows

Why choose Pyrobel-T?



XXL SIZE

The fire-resistant Pyrobel-T glass can be delivered in **very large sizes**.



100% HEAT SOAK TESTED

Many spontaneous breakages of tempered glass are caused by nickel sulphide inclusions (NiS). The Heat Soak Test (HST) **excludes panes likely to suffer breakages**. 100% of the tempered glass panes constituting the Pyrobel-T are passing the Heat Soak Test.



PROVIDING SOLUTIONS

We support our customers **with our high-level expertise**.



RESISTANT

In addition to its excellent fire resistance performance, **Pyrobel-T provides resistance to impacts, water and UV rays**.



SUPERB TRANSPARENCY

Pyrobel-T glasses have an **exceptional light transmission**.



MADE IN EUROPE



The information and data contained in this document are subject to change without notice.

Questions? Contact our sales team! www.agc-pyrobel.com/contact



PYROBEL-T

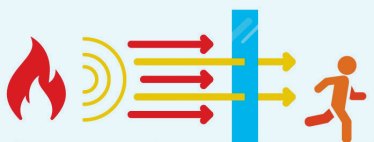
EI30

AGC

Fire-resistant glass focusing
on your safety

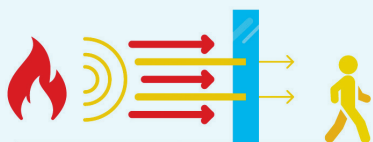


Pyrobel -T EI30 is an assembly of toughened sheets of glass, combined with fire-resistant clear intumescent interlayer(s). In the event of fire, the interlayer(s) transform into rigid and opaque fire shield(s), that keep out flames and reduce strongly the temperature on the protected surface of the Pyrobel glass. Every single tempered glass pane constituting the Pyrobel-T undergoes a Heat Soak Test. Pyrobel-T is a technology for XXL fire-resistant glass up to 4,5m high. The glass delivers fire protection in both directions according to the standard EN 13501-2.



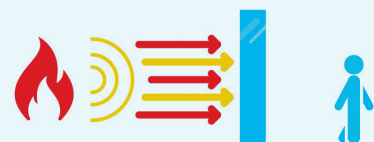
E - Integrity

No flames, smoke, gas.
No heat reduction.



EW - Integrity and Radiation Limitation

No flames, smoke, gas.
Limited heat transfer, restricted
to no more than 15kW/m².



EI - Integrity and Insulation

No flames, smoke, gas.
No heat transfer.

Technical data

Specification / Identification	Pyrobel-T EI30-18	Pyrobel-T EI30 IGU
Glazing type	Single	Double (or triple) Glazing Unit
Grade	Internal, UV resistant	External, UV resistant
Glass thickness	18,0 mm	Consult the Glass Configurator: www.agc-yourglass.com/ configurator
Thickness tolerances	± 1,4 mm	
Dimensions tolerances	± 2 mm	
Weight	ca 39 kg/m²	
Max dimensions	2,0 x 4,5 m	
Minimum dimensions	0,2 x 0,35 m	
Light transmission / Light reflection (%)	87 / 9	
U value (EN 673)	5,3 W/(m².K)	
Impact resistance (EN 12600)	1B1	
Sound reduction (EN 12758) Rw (C; Ctr)	39 (-1; -2) dB	
Exposure temperatures	-10°C / +50°C	

Fire certification

Check out the product selector for availabilities of fire certification on www.agc-pyrobel.com/selector.
The installation must be done in compliance with the fire test report.



Your Dreams, Our Challenge

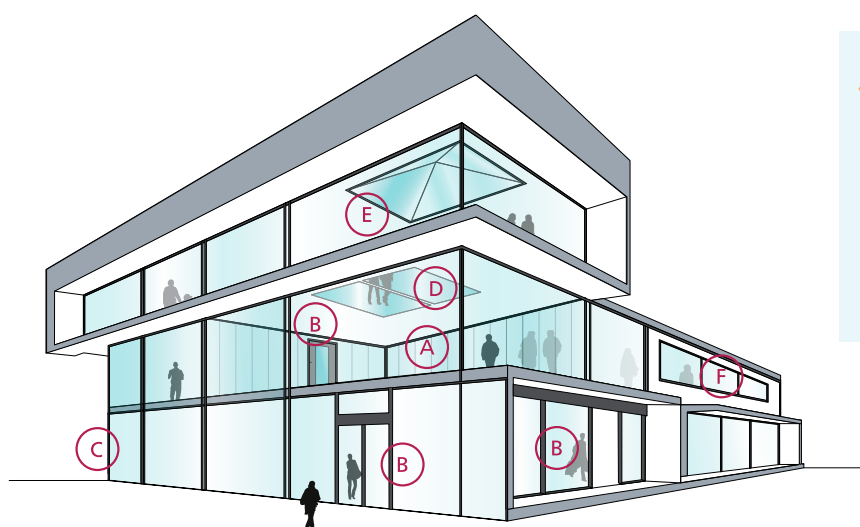
Availability

- SGU** Single glazing unit for internal application
- IGU** Insulated glazing unit for outdoor applications (double or triple glazing)
- SPS** Special products and combinations such as bulletproof and burglar resistant glass

VL Vision Line which is an all-glass butt-joint glazing system without mullions. Separate technical data sheets are available for this range of products

Applications

The Pyrobel-T product range has been tested in a large variety of aluminium, steel, wood & butt-joint systems:



- A Fire-resistant all-glass partitions
- B Fire-resistant glazed doors
- C Fire-resistant curtain walls - facades
- D Fire-resistant floor glazing
- E Fire-resistant roof glazing
- F Fire resistant windows

Why choose Pyrobel-T?



XXL SIZE

The fire-resistant Pyrobel-T glass can be delivered in **very large sizes**.



100% HEAT SOAK TESTED

Many spontaneous breakages of tempered glass are caused by nickel sulphide inclusions (NiS). The Heat Soak Test (HST) **excludes panes likely to suffer breakages**. 100% of the tempered glass panes constituting the Pyrobel-T are passing the Heat Soak Test.



PROVIDING SOLUTIONS

We support our customers **with our high-level expertise**.



RESISTANT

In addition to its excellent fire resistance performance, **Pyrobel-T provides resistance to impacts, water and UV rays**.



SUPERB TRANSPARENCY

Pyrobel-T glasses have an **exceptional light transmission**.



MADE IN EUROPE



The information and data contained in this document are subject to change without notice.

Questions? Contact our sales team! www.agc-pyrobel.com/contact



PYROBEL-T

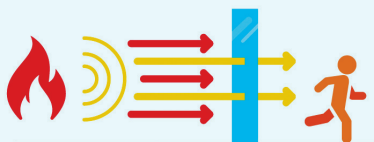
EI60

AGC

Fire-resistant glass focusing
on your safety

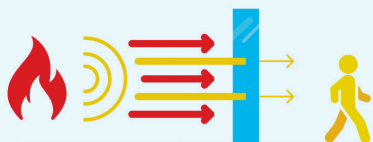


Pyrobel -T EI60 is an assembly of toughened sheets of glass, combined with fire-resistant clear intumescent interlayers. In the event of fire, the interlayers transform into rigid and opaque fire shields, that keep out flames and reduce strongly the temperature on the protected surface of the Pyrobel glass. Every single tempered glass pane constituting the Pyrobel-T undergoes a Heat Soak Test. Pyrobel-T is a technology for XXL fire-resistant glass up to 4,5m high. The glass delivers fire protection in both directions according to the standard EN 13501-2.



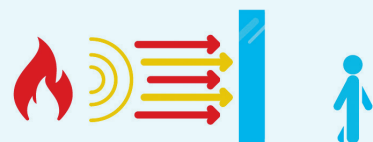
E - Integrity

No flames, smoke, gas.
No heat reduction.



EW - Integrity and Radiation Limitation

No flames, smoke, gas.
Limited heat transfer, restricted
to no more than 15kW/m².



EI - Integrity and Insulation

No flames, smoke, gas.
No heat transfer.

Technical data

Specification / Identification	Pyrobel-T EI60-28	Pyrobel-T EI60 IGU
Glazing type	Single	Double (or triple) Glazing Unit
Grade	Internal, UV resistant	External, UV resistant
Glass thickness	28,0 mm	Consult the Glass Configurator: www.agc-yourglass.com/ configurator
Thickness tolerances	± 2,0 mm	
Dimensions tolerances	± 2 mm	
Weight	ca 60 kg/m²	
Max dimensions	2,0 x 4,5 m	
Minimum dimensions	0,2 x 0,35 m	
Light transmission / Light reflection (%)	84 / 9	
U value (EN 673)	5,0 W/(m².K)	
Impact resistance (EN 12600)	1B1	
Sound reduction (EN 12758) Rw (C; Ctr)	42 (-2; -3) dB	
Exposure temperatures	-10°C / +50°C	

Fire certification

Check out the product selector for availabilities of fire certification on www.agc-pyrobel.com/selector.
The installation must be done in compliance with the fire test report.



Your Dreams, Our Challenge

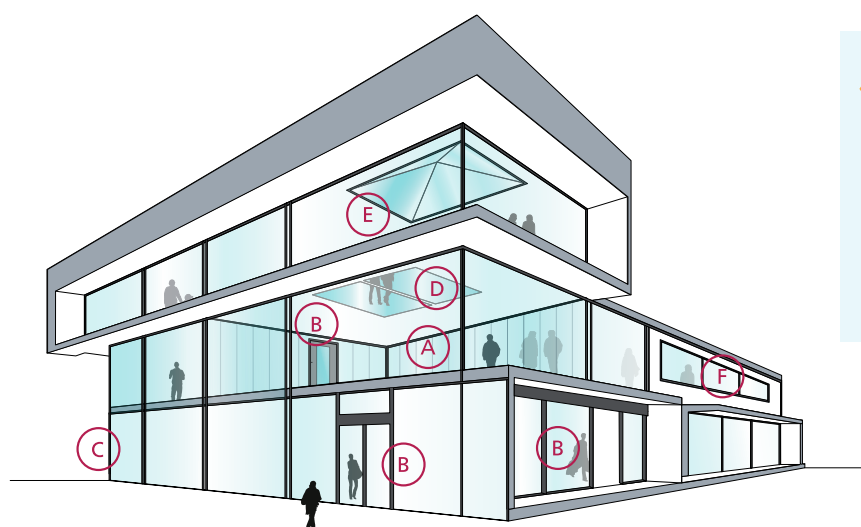
Availability

- SGU** Single glazing unit for internal application
- IGU** Insulated glazing unit for outdoor applications (double or triple glazing)
- SPS** Special products and combinations such as bulletproof and burglar resistant glass

VL Vision Line which is an all-glass butt-joint glazing system without mullions. Separate technical data sheets are available for this range of products

Applications

The Pyrobel-T product range has been tested in a large variety of aluminium, steel, wood & butt-joint systems:



- A Fire-resistant all-glass partitions
- B Fire-resistant glazed doors
- C Fire-resistant curtain walls - facades
- D Fire-resistant floor glazing
- E Fire-resistant roof glazing
- F Fire resistant windows

Why choose Pyrobel-T?



XXL SIZE

The fire-resistant Pyrobel-T glass can be delivered in **very large sizes**.



100% HEAT SOAK TESTED

Many spontaneous breakages of tempered glass are caused by nickel sulphide inclusions (NiS). The Heat Soak Test (HST) **excludes panes likely to suffer breakages**. 100% of the tempered glass panes constituting the Pyrobel-T are passing the Heat Soak Test.



PROVIDING SOLUTIONS

We support our customers **with our high-level expertise**.



RESISTANT

In addition to its excellent fire resistance performance, **Pyrobel-T provides resistance to impacts, water and UV rays**.



SUPERB TRANSPARENCY

Pyrobel-T glasses have an **exceptional light transmission**.



MADE IN EUROPE



The information and data contained in this document are subject to change without notice.

Questions? Contact our sales team! www.agc-pyrobel.com/contact



PYROBEL-T VISION LINE

Fire-resistant glass focusing
on your safety



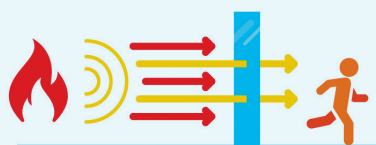
EI30

AGC

Pyrobel-T Vision Line (VL) EI30 is a butt-joined system using multiple Pyrobel-T fire-resistant glass panes, which offers a maximum of light transparency.

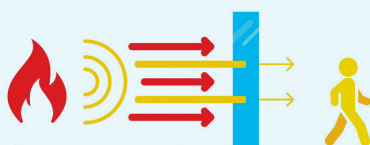
Pyrobel-T Vision Line is a technology for XXL fire-resistant glass up to 4,5m high. Every single tempered glass pane constituting the Pyrobel-T VL undergoes a Heat Soak Test. Pyrobel-T Vision Line delivers fire resistant, unbroken walls of glass, that ensures a broad field of vision, making it the perfect choice for modern fully glazed partitions. The glass delivers fire protection in both directions according to the standard EN 13501-2.

Pyrobel-T Vision Line Corner is a version that allows glazing to be installed edge to edge with surfaces at angles ranging from 90° to 180°.



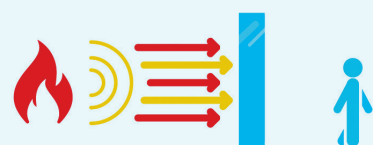
E - Integrity

No flames, smoke, gas.
No heat reduction.



EW - Integrity and Radiation Limitation

No flames, smoke, gas.
Limited heat transfer, restricted
to no more than 15kW/m².



EI - Integrity and Insulation

No flames, smoke, gas.
No heat transfer.

Technical data

Specification / Identification	Pyrobel-T EI30-22 VL	Pyrobel-T EI30-27 VL
Glazing type	Single	Single
Grade	Internal, UV resistant	Internal, UV resistant
Glass thickness	22,0 mm	26,8 mm
Thickness tolerances	± 1,4 mm	± 1,6 mm
Dimensions tolerances	± 2 mm	± 2 mm
Weight	Ca 49 kg/m ²	Ca 60 kg/m ²
Max dimensions	2,0 x 4,5 m	2,0 x 4,5 m
Minimum dimensions	0,2 x 0,35 m	0,2 x 0,35 m
Light transmission / Light reflection (%)	86 / 9	84 / 8
U value (EN 673)	5,2 W/(m ² .K)	5,1 W/(m ² .K)
Impact resistance (EN 12600)	1B1	1B1
Sound reduction (EN 12758) Rw (C; Ctr)	39 (-1; -3) dB	40 (-2; -2) dB
Exposure temperatures	-10°C / +50°C	

Fire certification

Check out the product selector for availabilities of fire certification on www.agc-pyrobel.com/selector.
The installation must be done in compliance with the fire test report.



Your Dreams, Our Challenge

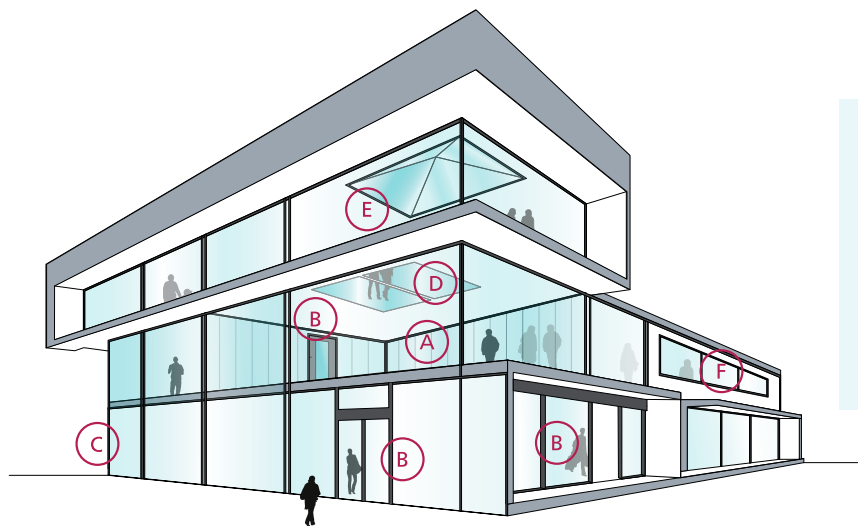
Availability

- SGU** Single glazing unit for internal application
- IGU** Insulated glazing unit for outdoor applications (double or triple glazing)

- SPS** Special products and combinations such as bulletproof and burglar resistant glass
- VL** Vision Line which is an all-glass butt-joint glazing system without mullions.

Applications

The Pyrobel-T product range has been tested in a large variety of aluminium, steel, wood & butt-joint systems:



- A Fire-resistant all-glass partitions
- B Fire-resistant glazed doors
- C Fire-resistant curtain walls - facades
- D Fire-resistant floor glazing
- E Fire-resistant roof glazing
- F Fire resistant windows

Why choose Pyrobel-T?



XXL SIZE

The fire-resistant Pyrobel-T glass can be delivered in **very large sizes**.



100% HEAT SOAK TESTED

Many spontaneous breakages of tempered glass are caused by nickel sulphide inclusions (NiS). The Heat Soak Test (HST) **excludes panes likely to suffer breakages**. 100% of the tempered glass panes constituting the Pyrobel-T are passing the Heat Soak Test.



PROVIDING SOLUTIONS

We support our customers **with our high-level expertise**.



RESISTANT

In addition to its excellent fire resistance performance, **Pyrobel-T provides resistance to impacts, water and UV rays**.



SUPERB TRANSPARENCY

Pyrobel-T glasses have an **exceptional light transmission**.



MADE IN EUROPE



The information and data contained in this document are subject to change without notice.

Questions? Contact our sales team! www.agc-pyrobel.com/contact



PYROBEL-T VISION LINE

Fire-resistant glass focusing
on your safety



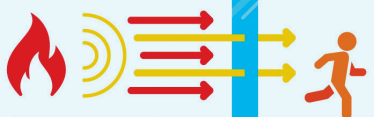
EI60

AGC

Pyrobel-T Vision Line (VL) EI60 is a butt-joined system using multiple Pyrobel-T fire-resistant glass panes, which offers a maximum of light transparency.

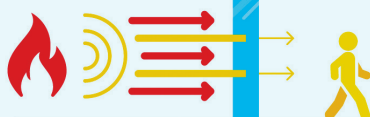
Pyrobel-T Vision Line is a technology for XXL fire-resistant glass up to 4,5m high. Every single tempered glass pane constituting the Pyrobel-T VL undergoes a Heat Soak Test. Pyrobel-T Vision Line delivers fire resistant, unbroken walls of glass, that ensures a broad field of vision, making it the perfect choice for modern fully glazed partitions. The glass delivers fire protection in both directions according to the standard EN 13501-2.

Pyrobel-T Vision Line Corner is a version that allows glazing to be installed edge to edge with surfaces at angles ranging from 90° to 180°.



E - Integrity

No flames, smoke, gas.
No heat reduction.



EW - Integrity and Radiation Limitation

No flames, smoke, gas.
Limited heat transfer, restricted
to no more than 15kW/m².



EI - Integrity and Insulation

No flames, smoke, gas.
No heat transfer.

Technical data

Specification / Identification	Pyrobel-T EI60-34 VL
Glazing type	Single
Grade	Internal, UV resistant
Glass thickness	34,0 mm
Thickness tolerances	± 2 mm
Dimensions tolerances	± 2 mm
Weight	Ca 75 kg/m²
Max dimensions	2,0 x 4,5 m
Minimum dimensions	0,2 x 0,35 m
Light transmission / Light reflection (%)	81 / 8
U value (EN 673)	5,0 W/(m².K)
Impact resistance (EN 12600)	1B1
Sound reduction (EN 12758) Rw (C; Ctr)	42 (-2; -2) dB
Exposure temperatures	-10°C / +50°C

Fire certification

Check out the product selector for availabilities of fire certification on www.agc-pyrobel.com/selector.
The installation must be done in compliance with the fire test report.



Your Dreams, Our Challenge

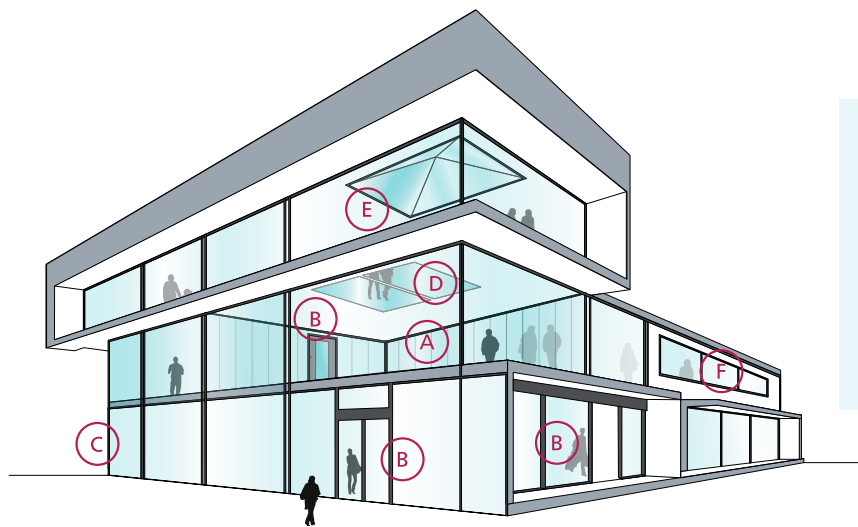
Availability

- SGU** Single glazing unit for internal application
- IGU** Insulated glazing unit for outdoor applications (double or triple glazing)

- SPS** Special products and combinations such as bulletproof and burglar resistant glass
- VL** Vision Line which is an all-glass butt-joint glazing system without mullions.

Applications

The Pyrobel-T product range has been tested in a large variety of aluminium, steel, wood & butt-joint systems:



- A Fire-resistant all-glass partitions
- B Fire-resistant glazed doors
- C Fire-resistant curtain walls - facades
- D Fire-resistant floor glazing
- E Fire-resistant roof glazing
- F Fire resistant windows

Why choose Pyrobel-T?



XXL SIZE

The fire-resistant Pyrobel-T glass can be delivered in **very large sizes**.



100% HEAT SOAK TESTED

Many spontaneous breakages of tempered glass are caused by nickel sulphide inclusions (NiS). The Heat Soak Test (HST) **excludes panes likely to suffer breakages**. 100% of the tempered glass panes constituting the Pyrobel-T are passing the Heat Soak Test.



PROVIDING SOLUTIONS

We support our customers **with our high-level expertise**.



RESISTANT

In addition to its excellent fire resistance performance, **Pyrobel-T provides resistance to impacts, water and UV rays**.



SUPERB TRANSPARENCY

Pyrobel-T glasses have an **exceptional light transmission**.



MADE IN EUROPE



The information and data contained in this document are subject to change without notice.

Questions? Contact our sales team! www.agc-pyrobel.com/contact



PYROBEL-T 35H HORIZONTAL

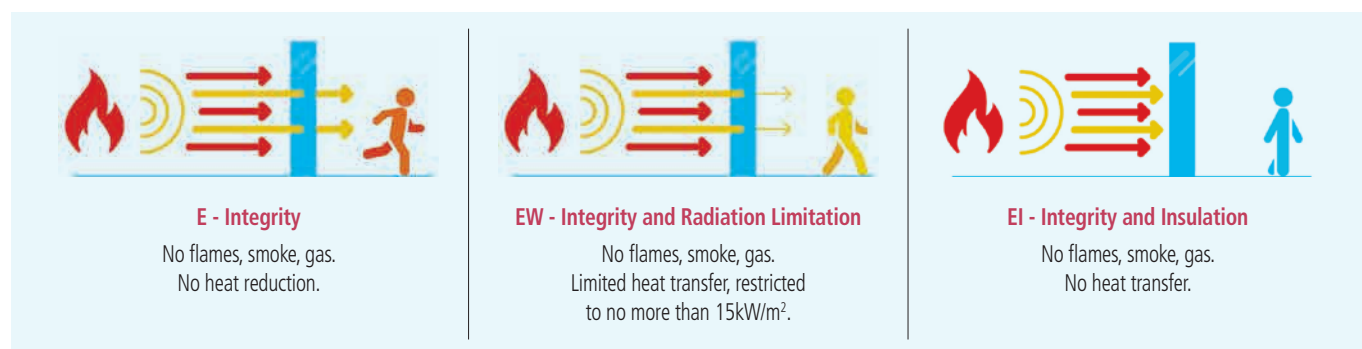
Fire-resistant glass focusing
on your safety



EI30

AGC

Pyrobel-T EI30 H is an assembly of toughened sheets of glass, combined with fire-resistant clear intumescent interlayers. Pyrobel-T is a technology for XXL fire-resistant glass up to 4,5m high. In the event of fire, the interlayers transform into rigid and opaque fire shields, that keep out flames, limit the heat transmission through the glazing and reduce strongly the temperature on the protected surface of the Pyrobel glass. Every single tempered glass pane constituting the Pyrobel-T undergoes a Heat Soak Test. Pyrobel-T EI30 H is designed to be applied in internal and external horizontal or sloped constructions and provide fire-resistance according to EN 13 501-2.



Technical data

Specification / Identification	Pyrobel-T EI30-35H
Glazing type	Single
Grade	Internal, UV resistant
Glass thickness	34,76 mm
Thickness tolerances	± 2,0 mm
Dimensions tolerances	± 2mm
Weight	ca 76 kg/m ²
Max dimensions	2,0 x 4,5 m
Minimum dimensions	0,2 x 0,35 m
Light transmission / Light reflection (%)	78 / 7
U value (EN 673)	4,8 W/(m ² .K)
Impact resistance (EN 12600)	1B1
Sound reduction (EN 12758) Rw (C; Ctr)	42 (-2; -2) dB
Exposure temperatures	-10°C / +50°C

Fire certification

Check out the product selector for availabilities of fire certification on www.agc-pyrobel.com/selector.
The installation must be done in compliance with the fire test report.

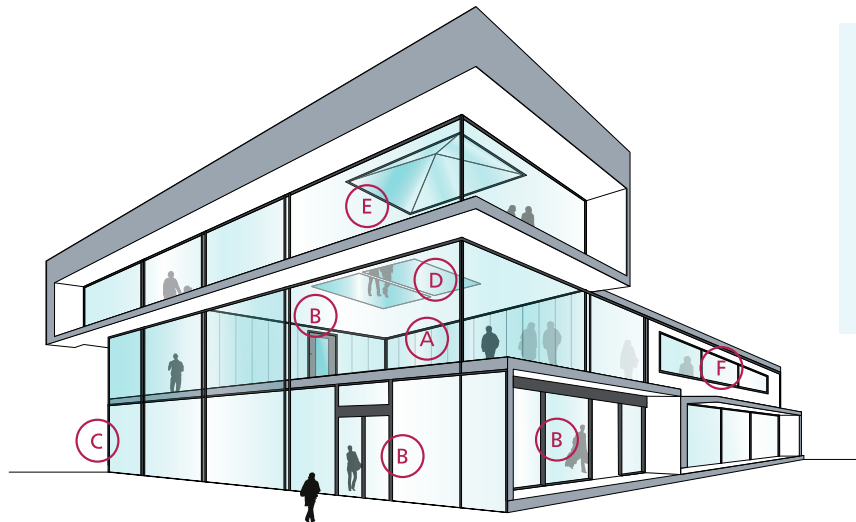
Availability

- SGU** Single glazing unit for internal application
- IGU** Insulated glazing unit for outdoor applications (double or triple glazing)

SPS Special products and combinations such as bulletproof and burglar resistant glass

Applications

The Pyrobel product range has been tested in a large variety of aluminium, steel, wood & butt-joint systems:



- A Fire-resistant all-glass partitions
- B Fire-resistant glazed doors
- C Fire-resistant curtain walls - facades
- D Fire-resistant floor glazing
- E Fire-resistant roof glazing
- F Fire resistant windows

Why choose Pyrobel-T?



XXL SIZE

The fire-resistant Pyrobel-T glass can be delivered in **very large sizes**.



100% HEAT SOAK TESTED

Many spontaneous breakages of tempered glass are caused by nickel sulphide inclusions (NiS). The Heat Soak Test (HST) **excludes panes likely to suffer breakages**. 100% of the tempered glass panes constituting the Pyrobel-T are passing the Heat Soak Test.



PROVIDING SOLUTIONS

We support our customers **with our high-level expertise**.



RESISTANT

In addition to its excellent fire resistance performance, **Pyrobel-T provides resistance to impacts, water and UV rays**.



SUPERB TRANSPARENCY

Pyrobel-T glasses have an **exceptional light transmission**.



MADE IN EUROPE



The information and data contained in this document are subject to change without notice.

Questions? Contact our sales team! www.agc-pyrobel.com/contact

