

PYROBEL 16

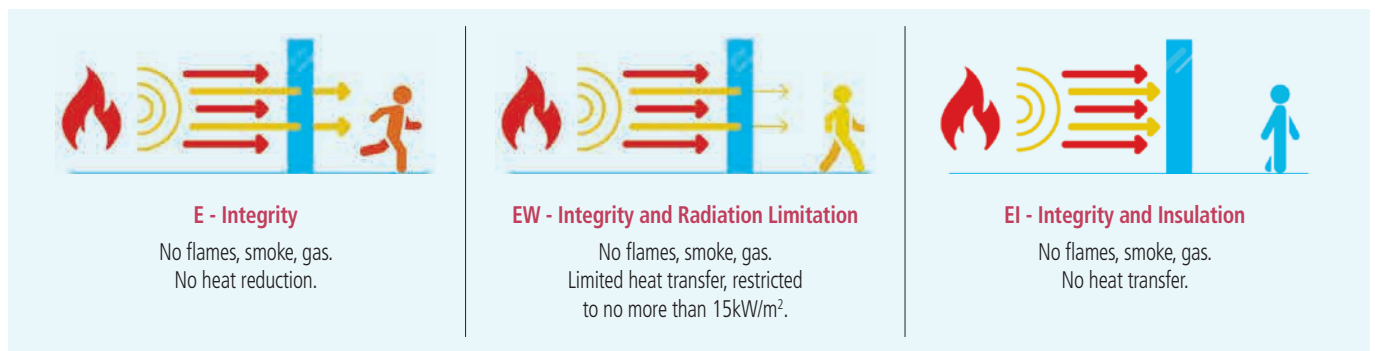
EI30 / EW60

AGC

Fire-resistant glass focusing on your safety



Pyrobel 16 is a laminated glass assembled with sheets of glass and fire-resistant clear intumescent interlayers. In the event of fire, the interlayers transform into rigid and opaque fire shields, that keep out flames, limit the heat transfer through the glazing and reduce strongly the temperature on the protected surface of the Pyrobel glass. The glass delivers fire protection in both directions according to the standard EN 13501-2.



Technical data

| Specification / Identification | Pyrobel 16 | Pyrobel 16 EG | Pyrobel 16 IGU |
|---|---------------------------|----------------------------|---|
| Glazing type | Single | Single | Double (or triple) Glazing Unit |
| Grade | Internal | Internal, 1 side UV filter | External with UV filter |
| Glass thickness | 17,3 mm | 21,1 mm | Consult the Glass Configurator: www.agc-yourglass.com/configurator |
| Thickness tolerances | ± 1 mm | ± 1,5 mm | |
| Dimensional tolerances | ± 2 mm | ± 2 mm | |
| Weight | ca 40 kg/m ² | ca 48 kg/m ² | |
| Minimum dimensions | No minimum | No minimum | |
| Light transmission / Light reflection (%) | 85 / 8 | 84 / 8 | |
| CV* Light transmission / Light reflection (%) | 89 / 8 | 89 / 8 | |
| U value (EN 673) | 5,3 W/(m ² .K) | 5,3 W/(m ² .K) | |
| Impact resistance (EN 12600) | 2B2 | 1B1 | |
| Burglar resistance (EN 356)** | NPD*** | P2A | |
| Sound reduction (EN 12758) Rw (C; Ctr) | 39 (-1; -3) dB | 39 (-1; -3) dB | |
| Exposure temperatures | | -40°C / +50°C | |

* Clearvision (CV) optional, low iron extra clear glass by AGC.

** The burglar resistance can be increased from P2A to P8B by laminating or assembling in IGU Pyrobel with Stratobel & Stratobel Security Burglary.

*** No performance declared, see Glass configurator.

Fire certification

Check out the product selector for availabilities of fire certification on www.agc-pyrobel.com/selector. The installation must be done in compliance with the fire test report. Pyrobel(ite) is extensively tested & approved under different standards: EN, BS, UL, ASTM, NFPA,...

 **PYROBEL**

Your Dreams, Our Challenge

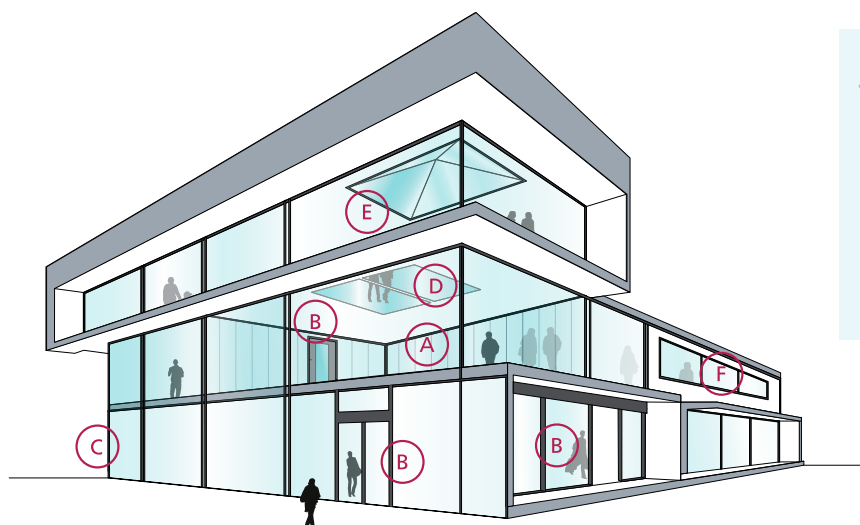
Availability

- SGU** Single glazing unit for internal application
- IGU** Insulated glazing unit for outdoor applications (double or triple glazing)
- EG** External grade version Pyrobel EG is single glazed Pyrobel with a 0,76 mm pvb interlayer and extra glass pane that acts as an UV filter

- VL** Vision Line which is an all-glass butt-joint glazing system without mullions. Multiple fire-resistant panes of glass are interconnected by means of a 4-5 mm silicone joint. Separate technical data sheets are available for this range of products
- SPS** Special products and combinations such as bulletproof and burglar resistant glass

Applications

The Pyrobel product range has been tested in a large variety of aluminium, steel, wood & butt-joint systems:



- A Fire-resistant all-glass partitions
- B Fire-resistant glazed doors
- C Fire-resistant curtain walls - facades
- D Fire-resistant floor glazing
- E Fire-resistant roof glazing
- F Fire resistant windows

Why choose Pyrobel(ite)?



THE SHORTEST DELIVERY TIMES

Since Pyrobel(ite) **can be cut** by our network of distributors, they can supply you with what you need **quickly and efficiently**.



ACOUSTIC INSULATION

Pyrobel(ite) has excellent **acoustic insulation properties**.



CRADLE TO CRADLE CERTIFIED

Pyrobel(ite) is **Cradle to Cradle Certified™ Silver**.



QUALITY

With 40 years of experience, Pyrobel delivers proven long-term quality. Pyrobel(ite) glass has an excellent optical quality supported by a **10-year warranty**.



PROVIDING SOLUTIONS

We support our customers **with our high-level expertise**.



MADE IN EUROPE



The information and data contained in this document are subject to change without notice.
 Questions? Contact our sales team! www.agc-pyrobel.com/contact



PYROBEL 17N

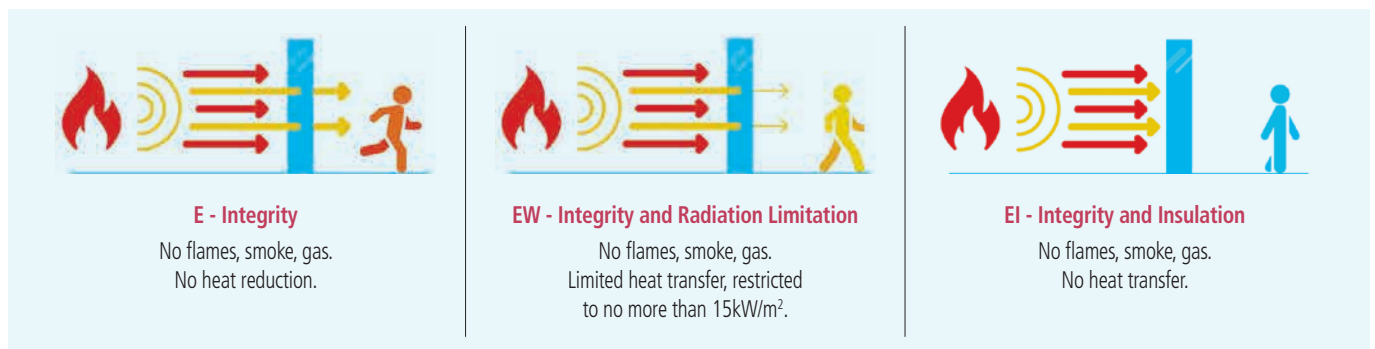
EI45/EW60

AGC

Fire-resistant glass focusing on your safety



Pyrobel 17N is a laminated glass assembled with sheets of glass and fire-resistant clear intumescent interlayers. In the event of fire, the interlayers transform into rigid and opaque fire shields, that keep out flames, limit the heat transfer through the glazing and reduce strongly the temperature on the protected surface of the Pyrobel glass. The glass delivers fire protection in both directions according to the standard EN 13501-2.



Technical data

| Specification / Identification | Pyrobel 17N | Pyrobel 17N EG | Pyrobel 17N IGU |
|--|---------------------------|----------------------------|--|
| Glazing type | Single | Single | Double (or triple) Glazing Unit |
| Grade | Internal | Internal, 1 side UV filter | External with UV filter |
| Glass thickness | 17,8 mm | 21,6 mm | |
| Thickness tolerances | ± 1,6 mm | ± 1,8 mm | |
| Dimensions tolerances | ± 2 mm | ± 2 mm | |
| Weight | ca 40 kg/m ² | ca 48 kg/m ² | |
| Minimum dimensions | No minimum | No minimum | Consult the Glass Configurator: |
| Light transmission / Light reflection (%) | 86 / 8 | 85 / 8 | |
| CV*Light transmission / Light reflection (%) | 89 / 8 | 88 / 8 | |
| U value (EN 673) | 5,4 W/(m ² .K) | 5,2 W/(m ² .K) | www.agc-yourglass.com/configurator |
| Impact resistance (EN 12600) | 1B1 | 1B1 | |
| Burglar resistance (EN 356)** | P1A | P2A | |
| Sound reduction (EN 12758) Rw (C; Ctr) | 39 (0; -3) dB | 40 (-1; -3) dB | |
| Exposure temperatures | | -40°C / +50°C | |

* Clearvision (CV) optional, low iron extra clear glass by AGC.

** The burglar resistance can be increased from P2A to P8B by laminating or assembling in IGU Pyrobel with Stratobel & Stratobel Security Burglary.

Fire certification

Check out the product selector for availabilities of fire certification on www.agc-pyrobel.com/selector. The installation must be done in compliance with the fire test report. Pyrobel(ite) is extensively tested & approved under different standards: EN, BS, UL, ASTM, NFPA,...

 **PYROBEL**

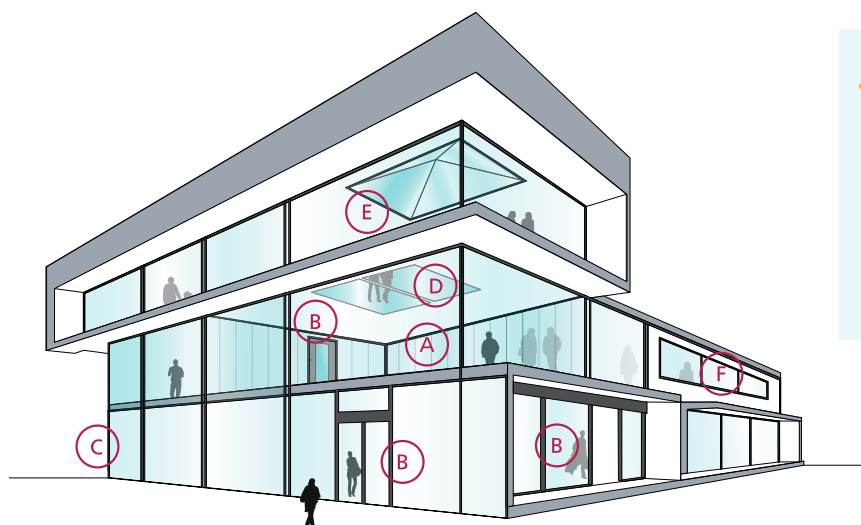
Your Dreams, Our Challenge

Availability

- SGU** Single glazing unit for internal application
- IGU** Insulated glazing unit for outdoor applications (double or triple glazing)
- EG** External grade version Pyrobel EG is single glazed Pyrobel with a 0,76 mm pvb interlayer and extra glass pane that acts as an UV filter
- VL** Vision Line which is an all-glass butt-joint glazing system without mullions. Multiple fire-resistant panes of glass are interconnected by means of a 4-5 mm silicone joint. Separate technical data sheets are available for this range of products
- SPS** Special products and combinations such as bulletproof and burglar resistant glass

Applications

The Pyrobel product range has been tested in a large variety of aluminium, steel, wood & butt-joint systems:



- A Fire-resistant all-glass partitions
- B Fire-resistant glazed doors
- C Fire-resistant curtain walls - facades
- D Fire-resistant floor glazing
- E Fire-resistant roof glazing
- F Fire resistant windows

Why choose Pyrobel(ite)?



THE SHORTEST DELIVERY TIMES

Since Pyrobel(ite) **can be cut** by our network of distributors, they can supply you with what you need **quickly and efficiently**.



ACOUSTIC INSULATION

Pyrobel(ite) has excellent **acoustic insulation properties**.



CRADLE TO CRADLE CERTIFIED

Pyrobel(ite) is **Cradle to Cradle Certified™ Silver**.



QUALITY

With 40 years of experience, Pyrobel delivers proven long-term quality. Pyrobel(ite) glass has an excellent optical quality supported by a **10-year warranty**.



PROVIDING SOLUTIONS

We support our customers **with our high-level expertise**.



MADE IN EUROPE



The information and data contained in this document are subject to change without notice.
 Questions? Contact our sales team! www.agc-pyrobel.com/contact



PYROBEL 25

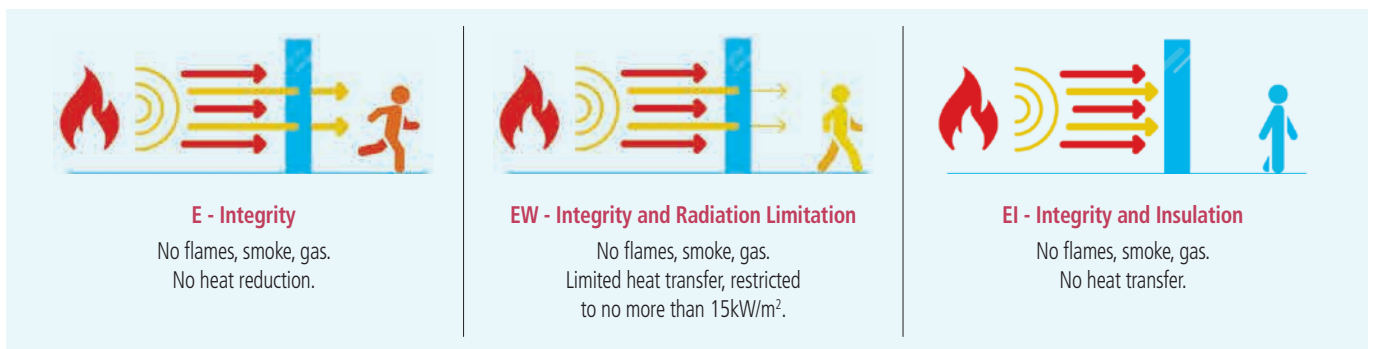
EI60



Fire-resistant glass focusing on your safety



Pyrobel 25 is a laminated glass assembled with sheets of glass and fire-resistant clear intumescent interlayers. In the event of fire, the interlayers transform into rigid and opaque fire shields, that keep out flames, limit the heat transfer through the glazing and reduce strongly the temperature on the protected surface of the Pyrobel glass. The glass delivers fire protection in both directions according to the standard EN 13501-2.



Technical data

| Specification / Identification | Pyrobel 25 | Pyrobel 25 EG | Pyrobel 25 IGU |
|---|---------------------------|----------------------------|---|
| Glazing type | Single | Single | Double (or triple) Glazing Unit |
| Grade | Internal | Internal, 1 side UV filter | External with UV filter |
| Glass thickness | 26,6 mm | 30,4 mm | Consult the Glass Configurator: www.agc-yourglass.com/configurator |
| Thickness tolerances | ± 2 mm | ± 2 mm | |
| Dimensions tolerances | ± 2 mm | ± 2 mm | |
| Weight | ca 60 kg/m ² | ca 68 kg/m ² | |
| Minimum dimensions | No minimum | No minimum | |
| Light transmission / Light reflection (%) | 82 / 7 | 82 / 7 | |
| CV* Light transmission / Light reflection (%) | 88 / 8 | 87 / 8 | |
| U value (EN 673) | 5,1 W/(m ² .K) | 5,0 W/(m ² .K) | |
| Impact resistance (EN 12600) | 1B1 | 1B1 | |
| Burglar resistance (EN 356)** | P1A | P2A | |
| Sound reduction (EN 12758) Rw (C; Ctr) | 43 (0; -3) dB | 43 (-1; -4) dB | |
| Exposure temperatures | | -40°C / +50°C | |

* Clearvision (CV) optional, low iron extra clear glass by AGC.

** The burglar resistance can be increased from P2A to P8B by laminating or assembling in IGU Pyrobel with Stratobel & Stratobel Security Burglary.

Fire certification

Check out the product selector for availabilities of fire certification on www.agc-pyrobel.com/selector. The installation must be done in compliance with the fire test report. Pyrobel(ite) is extensively tested & approved under different standards: EN, BS, UL, ASTM, NFPA,...



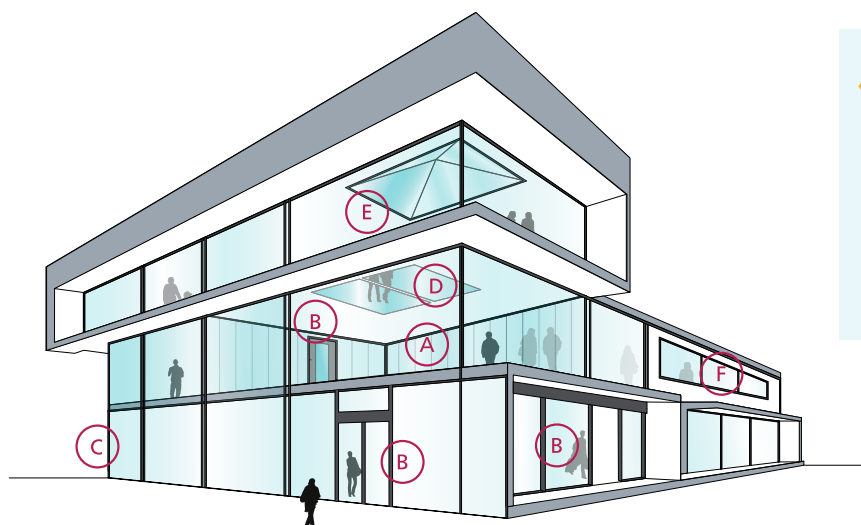
Your Dreams, Our Challenge

Availability

- SGU** Single glazing unit for internal application
- IGU** Insulated glazing unit for outdoor applications (double or triple glazing)
- EG** External grade version Pyrobel EG is single glazed Pyrobel with a 0,76 mm pvb interlayer and extra glass pane that acts as an UV filter
- VL** Vision Line which is an all-glass butt-joint glazing system without mullions. Multiple fire-resistant panes of glass are interconnected by means of a 4-5 mm silicone joint. Separate technical data sheets are available for this range of products
- SPS** Special products and combinations such as bulletproof and burglar resistant glass

Applications

The Pyrobel product range has been tested in a large variety of aluminium, steel, wood & butt-joint systems:





- A Fire-resistant all-glass partitions
- B Fire-resistant glazed doors
- C Fire-resistant curtain walls - facades
- D Fire-resistant floor glazing
- E Fire-resistant roof glazing
- F Fire resistant windows

Why choose Pyrobel(ite)?



THE SHORTEST DELIVERY TIMES
 Since Pyrobel(ite) **can be cut** by our network of distributors, they can supply you with what you need **quickly and efficiently**.



ACOUSTIC INSULATION
 Pyrobel(ite) has excellent **acoustic insulation properties**.



CRADLE TO CRADLE CERTIFIED
 Pyrobel(ite) is **Cradle to Cradle Certified™ Silver**.



QUALITY
 With 40 years of experience, Pyrobel delivers proven long-term quality. Pyrobel(ite) glass has an excellent optical quality supported by a **10-year warranty**.



PROVIDING SOLUTIONS
 We support our customers **with our high-level expertise**.



MADE IN EUROPE



The information and data contained in this document are subject to change without notice.
 Questions? Contact our sales team! www.agc-pyrobel.com/contact



PYROBEL 30

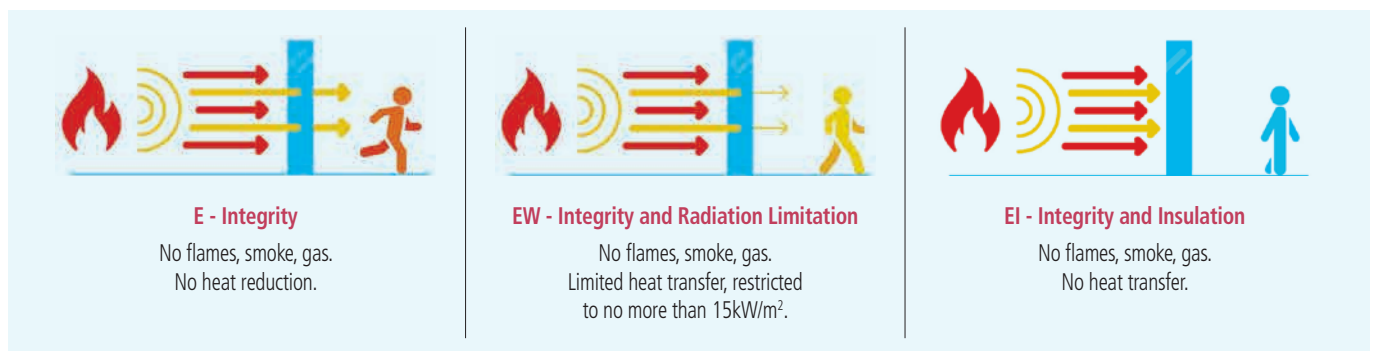
EI90



Fire-resistant glass focusing on your safety



Pyrobel 30 is a laminated glass assembled with sheets of glass and fire-resistant clear intumescent interlayers. In the event of fire, the interlayers transform into rigid and opaque fire shields, that keep out flames, limit the heat transfer through the glazing and reduce strongly the temperature on the protected surface of the Pyrobel glass. The glass delivers fire protection in both directions according to the standard EN 13501-2.



Technical data

| Specification / Identification | Pyrobel 30 | Pyrobel 30 EG | Pyrobel 30 IGU |
|---|---------------------------|----------------------------|---|
| Glazing type | Single | Single | Double (or triple) Glazing Unit |
| Grade | Internal | Internal, 1 side UV filter | External with UV filter |
| Glass thickness | 30 mm | 33,7 mm | Consult the Glass Configurator: www.agc-yourglass.com/configurator |
| Thickness tolerances | ± 2,5 mm | ± 2,8 mm | |
| Dimensions tolerances | ± 2 mm | ± 2 mm | |
| Weight | ca 69 kg/m ² | ca 77 kg/m ² | |
| Minimum dimensions | No minimum | No minimum | |
| Light transmission / Light reflection (%) | 81 / 7 | 80 / 7 | |
| CV* Light transmission / Light reflection (%) | 86 / 8 | 86 / 8 | |
| U value (EN 673) | 5,0 W/(m ² .K) | 4,8 W/(m ² .K) | |
| Impact resistance (EN 12600) | 1B1 | 1B1 | |
| Burglar resistance (EN 356)** | P1A | P2A | |
| Sound reduction (EN 12758) Rw (C; Ctr) | 42 (-1; -4) dB | 43 (-1; -4) dB | |
| Exposure temperatures | | -40°C / +50°C | |

* Clearvision (CV) optional, low iron extra clear glass by AGC.

** The burglar resistance can be increased from P2A to P8B by laminating or assembling in IGU Pyrobel with Stratobel & Stratobel Security Burglary.

Fire certification

Check out the product selector for availabilities of fire certification on www.agc-pyrobel.com/selector. The installation must be done in compliance with the fire test report. Pyrobel(ite) is extensively tested & approved under different standards: EN, BS, UL, ASTM, NFPA,...



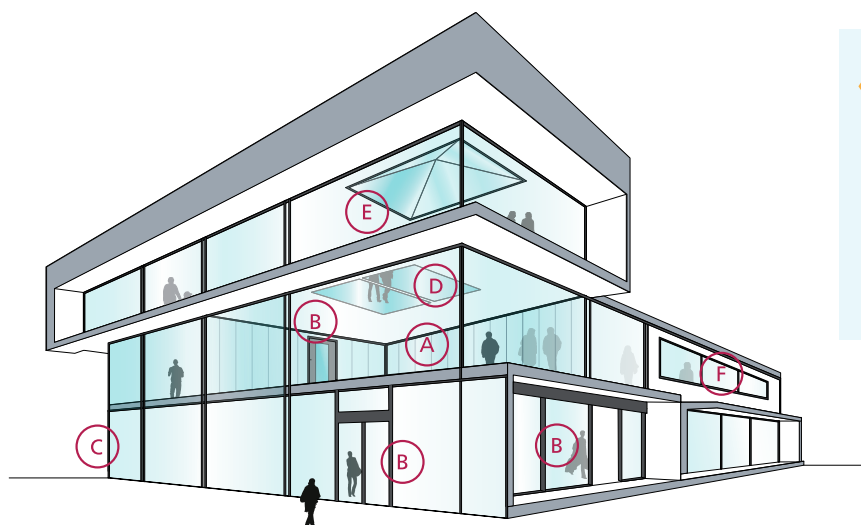
Your Dreams, Our Challenge

Availability

- SGU** Single glazing unit for internal application
- IGU** Insulated glazing unit for outdoor applications (double or triple glazing)
- EG** External grade version Pyrobel EG is single glazed Pyrobel with a 0,76 mm pvb interlayer and extra glass pane that acts as an UV filter
- VL** Vision Line which is an all-glass butt-joint glazing system without mullions. Multiple fire-resistant panes of glass are interconnected by means of a 4-5 mm silicone joint. Separate technical data sheets are available for this range of products
- SPS** Special products and combinations such as bulletproof and burglar resistant glass

Applications

The Pyrobel product range has been tested in a large variety of aluminium, steel, wood & butt-joint systems:





- A Fire-resistant all-glass partitions
- B Fire-resistant glazed doors
- C Fire-resistant curtain walls - facades
- D Fire-resistant floor glazing
- E Fire-resistant roof glazing
- F Fire resistant windows

Why choose Pyrobel(ite)?



THE SHORTEST DELIVERY TIMES
 Since Pyrobel(ite) **can be cut** by our network of distributors, they can supply you with what you need **quickly and efficiently**.



ACOUSTIC INSULATION
 Pyrobel(ite) has excellent **acoustic insulation properties**.



CRADLE TO CRADLE CERTIFIED
 Pyrobel(ite) is **Cradle to Cradle Certified™ Silver**.



QUALITY
 With 40 years of experience, Pyrobel delivers proven long-term quality. Pyrobel(ite) glass has an excellent optical quality supported by a **10-year warranty**.



PROVIDING SOLUTIONS
 We support our customers **with our high-level expertise**.



MADE IN EUROPE



The information and data contained in this document are subject to change without notice.
 Questions? Contact our sales team! www.agc-pyrobel.com/contact



PYROBEL 30 EG2

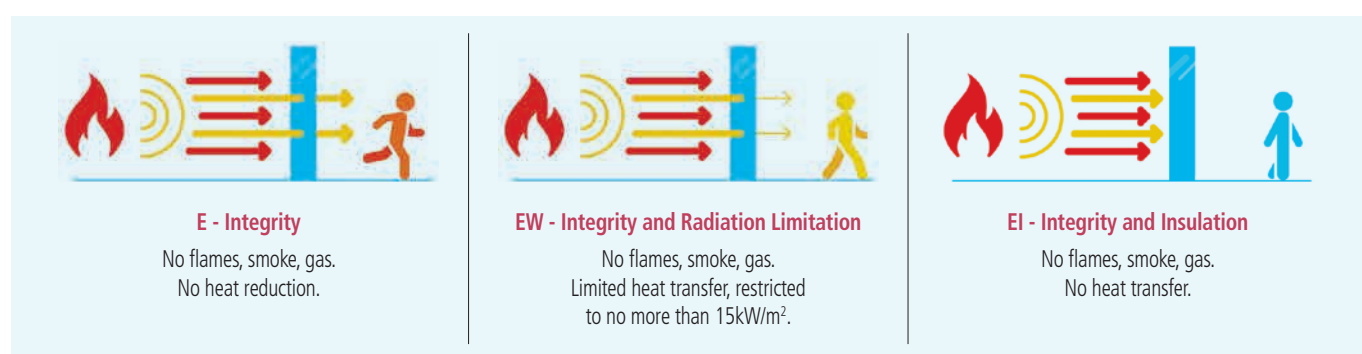
EI90

AGC

Fire-resistant glass focusing on your safety



Pyrobel 30 EG2 is a laminated glass assembled with sheets of glass and fire-resistant clear intumescent interlayers. In the event of fire, the interlayers transform into rigid and opaque fire shields, that keep out flames, limit the heat transfer through the glazing and reduce strongly the temperature on the protected surface of the Pyrobel glass. The glass delivers fire protection in both directions according to the standard EN 13501-2.



Technical data

| Specification / Identification | Pyrobel 30 EG2 |
|---|-----------------------------|
| Glazing type | Single |
| Grade | internal, 2 sides UV filter |
| Glass thickness | 37,5 mm |
| Thickness tolerances | ± 3 mm |
| Dimensions tolerances | ± 2 mm |
| Weight | ca 85 kg/m ² |
| Minimum dimensions | No minimum |
| Light transmission / Light reflection (%) | 80 / 7 |
| CV* Light transmission / Light reflection (%) | 86 / 8 |
| U value (EN 673) | 4,8 W/(m ² .K) |
| Impact resistance (EN 12600) | 1B1 |
| Burglar resistance (EN 356)** | P2A |
| Sound reduction (EN 12758) Rw (C; Ctr) | 44 (-1; -4) dB |
| Exposure temperatures | -40°C / +50°C |

* Clearvision (CV) optional, low iron extra clear glass by AGC.

** The burglar resistance can be increased from P2A to P8B by laminating or assembling in IGU Pyrobel with Stratobel & Stratobel Security Burglary.

Fire certification

Check out the product selector for availabilities of fire certification on www.agc-pyrobel.com/selector. The installation must be done in compliance with the fire test report. Pyrobel(ite) is extensively tested & approved under different standards: EN, BS, UL, ASTM, NFPA,...

 **PYROBEL**

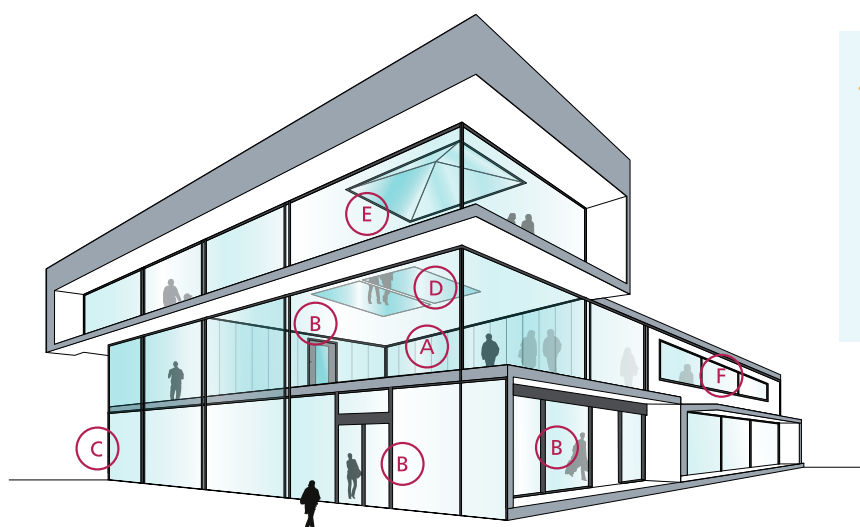
Your Dreams, Our Challenge

Availability

- SGU** Single glazing unit for internal application
- IGU** Insulated glazing unit for outdoor applications (double or triple glazing)
- EG** External grade version Pyrobel EG is single glazed Pyrobel with a 0,76 mm pvb interlayer and extra glass pane that acts as an UV filter
- VL** Vision Line which is an all-glass butt-joint glazing system without mullions. Multiple fire-resistant panes of glass are interconnected by means of a 4-5 mm silicone joint. Separate technical data sheets are available for this range of products
- SPS** Special products and combinations such as bulletproof and burglar resistant glass

Applications

The Pyrobel product range has been tested in a large variety of aluminium, steel, wood & butt-joint systems:





- A Fire-resistant all-glass partitions
- B Fire-resistant glazed doors
- C Fire-resistant curtain walls - facades
- D Fire-resistant floor glazing
- E Fire-resistant roof glazing
- F Fire resistant windows

Why choose Pyrobel(ite)?



THE SHORTEST DELIVERY TIMES
 Since Pyrobel(ite) **can be cut** by our network of distributors, they can supply you with what you need **quickly and efficiently**.



ACOUSTIC INSULATION
 Pyrobel(ite) has excellent **acoustic insulation properties**.



CRADLE TO CRADLE CERTIFIED
 Pyrobel(ite) is **Cradle to Cradle Certified™ Silver**.



QUALITY
 With 40 years of experience, Pyrobel delivers proven long-term quality. Pyrobel(ite) glass has an excellent optical quality supported by a **10-year warranty**.



PROVIDING SOLUTIONS
 We support our customers **with our high-level expertise**.



MADE IN EUROPE



The information and data contained in this document are subject to change without notice.
 Questions? Contact our sales team! www.agc-pyrobel.com/contact



PYROBEL 53N

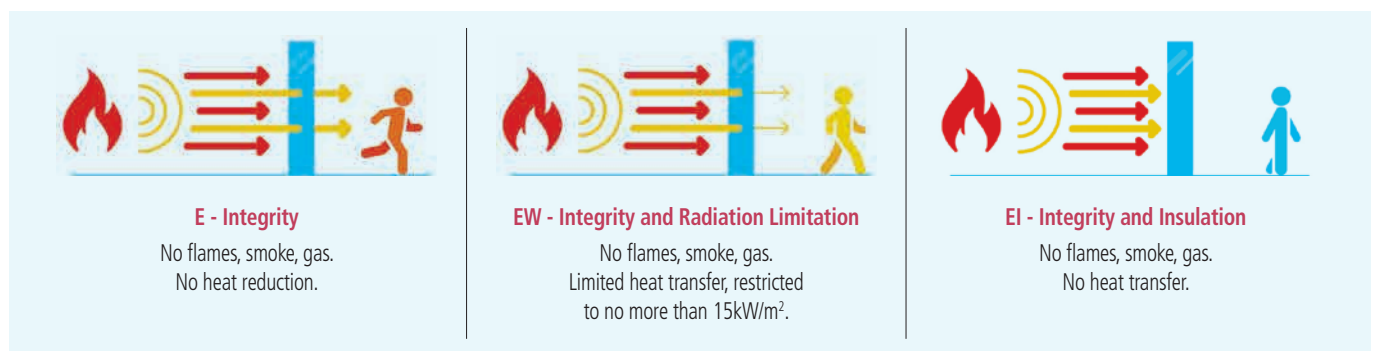
EI120



Fire-resistant glass focusing on your safety



Pyrobel 53N is a laminated glass assembled with sheets of glass and fire-resistant clear intumescent interlayers. In the event of fire, the interlayers transform into rigid and opaque fire shields, that keep out flames, limit the heat transfer through the glazing and reduce strongly the temperature on the protected surface of the Pyrobel glass. The glass delivers fire protection in both directions according to the standard EN 13501-2.



Technical data

| Specification / Identification | Pyrobel 53N | Pyrobel 53N EG | Pyrobel 53N IGU |
|---|---------------------------|----------------------------|---|
| Glazing type | Single | Single | Double (or triple) Glazing Unit |
| Grade | Internal | Internal, 1 side UV filter | External with UV filter |
| Glass thickness | 52,7 mm | 56,5 mm | Consult the Glass Configurator: www.agc-yourglass.com/configurator |
| Thickness tolerances | ± 3 mm | ± 3 mm | |
| Dimensions tolerances | ± 2 mm | ± 2 mm | |
| Weight | ca 122 kg/m ² | ca 130 kg/m ² | |
| Minimum dimensions | No minimum | No minimum | |
| Light transmission / Light reflection (%) | 75 / 7 | 73 / 7 | |
| CV* Light transmission / Light reflection (%) | 84 / 8 | 84 / 8 | |
| U value (EN 673) | 4,5 W/(m ² .K) | 4,4 W/(m ² .K) | |
| Impact resistance (EN 12600) | 1B1 | 1B1 | |
| Burglar resistance (EN356)** | P2A | P2A | |
| Sound reduction (EN 12758) Rw (C; Ctr) | 48 (-2; -7) dB | 49 (-1; -6) dB | |
| Exposure temperatures | | -40°C / +50°C | |

* Clearvision (CV) optional, low iron extra clear glass by AGC.

** The burglar resistance can be increased from P2A to P8B by laminating or assembling in IGU Pyrobel with Stratobel & Stratobel Security Burglary.

Fire certification

Check out the product selector for availabilities of fire certification on www.agc-pyrobel.com/selector. The installation must be done in compliance with the fire test report. Pyrobel(ite) is extensively tested & approved under different standards: EN, BS, UL, ASTM, NFPA,...



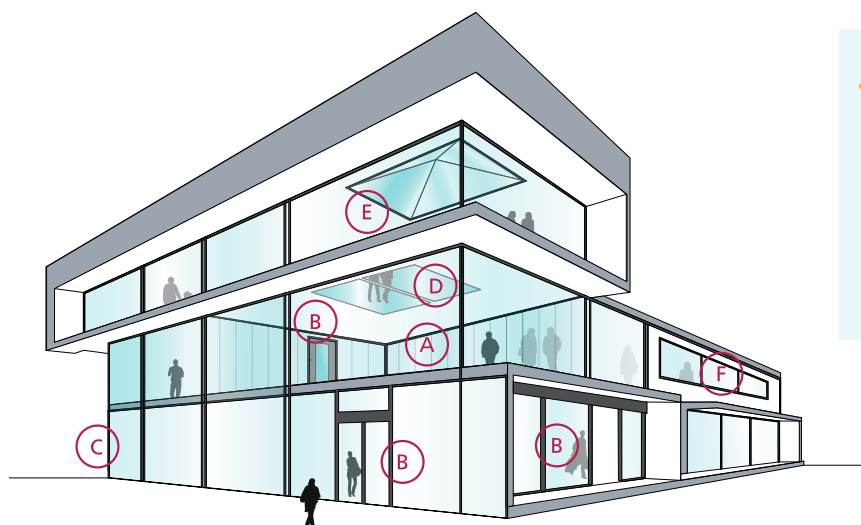
Your Dreams, Our Challenge

Availability

- SGU** Single glazing unit for internal application
- IGU** Insulated glazing unit for outdoor applications (double or triple glazing)
- EG** External grade version Pyrobel EG is single glazed Pyrobel with a 0,76 mm pvb interlayer and extra glass pane that acts as an UV filter
- VL** Vision Line which is an all-glass butt-joint glazing system without mullions. Multiple fire-resistant panes of glass are interconnected by means of a 4-5 mm silicone joint. Separate technical data sheets are available for this range of products
- SPS** Special products and combinations such as bulletproof and burglar resistant glass

Applications

The Pyrobel product range has been tested in a large variety of aluminium, steel, wood & butt-joint systems:





- A Fire-resistant all-glass partitions
- B Fire-resistant glazed doors
- C Fire-resistant curtain walls - facades
- D Fire-resistant floor glazing
- E Fire-resistant roof glazing
- F Fire resistant windows

Why choose Pyrobel(ite)?



THE SHORTEST DELIVERY TIMES
 Since Pyrobel(ite) **can be cut** by our network of distributors, they can supply you with what you need **quickly and efficiently**.



ACOUSTIC INSULATION
 Pyrobel(ite) has excellent **acoustic insulation properties**.



CRADLE TO CRADLE CERTIFIED
 Pyrobel(ite) is **Cradle to Cradle Certified™ Silver**.



QUALITY
 With 40 years of experience, Pyrobel delivers proven long-term quality. Pyrobel(ite) glass has an excellent optical quality supported by a **10-year warranty**.



PROVIDING SOLUTIONS
 We support our customers **with our high-level expertise**.



MADE IN EUROPE



The information and data contained in this document are subject to change without notice.
 Questions? Contact our sales team! www.agc-pyrobel.com/contact



PYROBEL 54

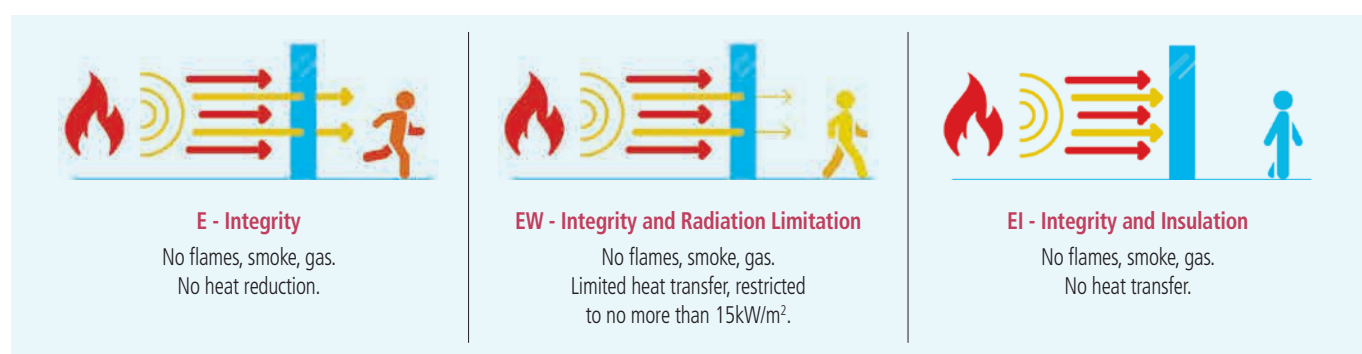
EI120

AGC

Fire-resistant glass focusing on your safety



Pyrobel 54 is a laminated glass assembled with sheets of glass and fire-resistant clear intumescent interlayers. In the event of fire, the interlayers transform into rigid and opaque fire shields, that keep out flames, limit the heat transfer through the glazing and reduce strongly the temperature on the protected surface of the Pyrobel glass. The glass delivers fire protection in both directions according to the standard EN 13501-2.



Technical data

| Specification / Identification | Pyrobel 54 | Pyrobel 54 EG | Pyrobel 54 IGU |
|---|---------------------------|----------------------------|---|
| Glazing type | Single | Single | Double (or triple) Glazing Unit |
| Grade | Internal | Internal, 1 side UV filter | External with UV filter |
| Glass thickness | 54 mm | 57,8 mm | Consult the Glass Configurator: www.agc-yourglass.com/configurator |
| Thickness tolerances | ± 3 mm | ± 3 mm | |
| Dimensions tolerances | ± 2 mm | ± 2 mm | |
| Weight | ca 124 kg/m ² | ca 132 kg/m ² | |
| Minimum dimensions | No minimum | No minimum | |
| Light transmission / Light reflection (%) | 75 / 7 | 74 / 7 | |
| CV* Light transmission / Light reflection (%) | 83 / 7 | 83 / 7 | |
| U value (EN 673) | 4,4 W/(m ² .K) | 4,4 W/(m ² .K) | |
| Impact resistance (EN 12600) | 1B1 | 1B1 | |
| Burglar resistance (EN 356)** | P2A | P2A | |
| Sound reduction (EN 12758) Rw (C; Ctr) | 49 (-1; -4) dB | 49 (0; -3) dB | |
| Exposure temperatures | | -40°C / +50°C | |

* Clearvision (CV) optional, low iron extra clear glass by AGC.

** The burglar resistance can be increased from P2A to P8B by laminating or assembling in IGU Pyrobel with Stratobel & Stratobel Security Burglary.

Fire certification

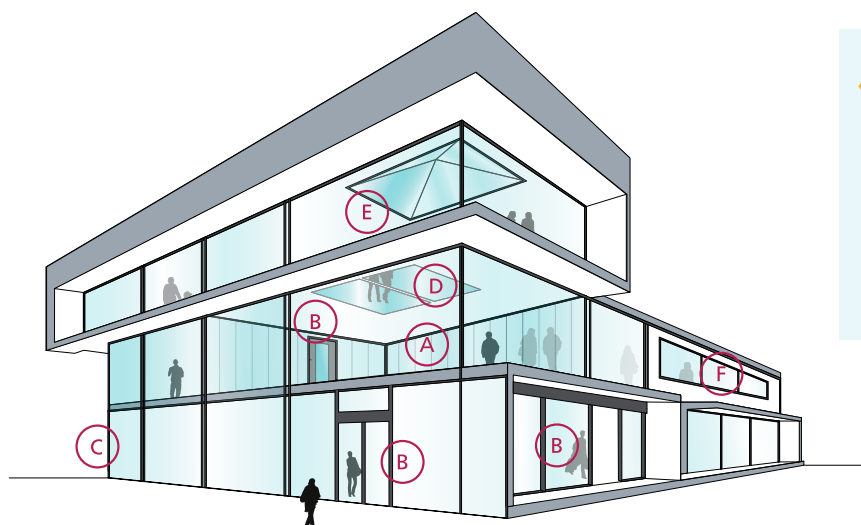
Check out the product selector for availabilities of fire certification on www.agc-pyrobel.com/selector. The installation must be done in compliance with the fire test report. Pyrobel(ite) is extensively tested & approved under different standards: EN, BS, UL, ASTM, NFPA,...

Availability

- SGU** Single glazing unit for internal application
- IGU** Insulated glazing unit for outdoor applications (double or triple glazing)
- EG** External grade version Pyrobel EG is single glazed Pyrobel with a 0,76 mm pvb interlayer and extra glass pane that acts as an UV filter
- VL** Vision Line which is an all-glass butt-joint glazing system without mullions. Multiple fire-resistant panes of glass are interconnected by means of a 4-5 mm silicone joint. Separate technical data sheets are available for this range of products
- SPS** Special products and combinations such as bulletproof and burglar resistant glass

Applications

The Pyrobel product range has been tested in a large variety of aluminium, steel, wood & butt-joint systems:





- A Fire-resistant all-glass partitions
- B Fire-resistant glazed doors
- C Fire-resistant curtain walls - facades
- D Fire-resistant floor glazing
- E Fire-resistant roof glazing
- F Fire resistant windows

Why choose Pyrobel(ite)?



THE SHORTEST DELIVERY TIMES
 Since Pyrobel(ite) **can be cut** by our network of distributors, they can supply you with what you need **quickly and efficiently**.



ACOUSTIC INSULATION
 Pyrobel(ite) has excellent **acoustic insulation properties**.



CRADLE TO CRADLE CERTIFIED
 Pyrobel(ite) is **Cradle to Cradle Certified™ Silver**.



QUALITY
 With 40 years of experience, Pyrobel delivers proven long-term quality. Pyrobel(ite) glass has an excellent optical quality supported by a **10-year warranty**.



PROVIDING SOLUTIONS
 We support our customers **with our high-level expertise**.



MADE IN EUROPE



The information and data contained in this document are subject to change without notice.
 Questions? Contact our sales team! www.agc-pyrobel.com/contact



PYROBEL 81

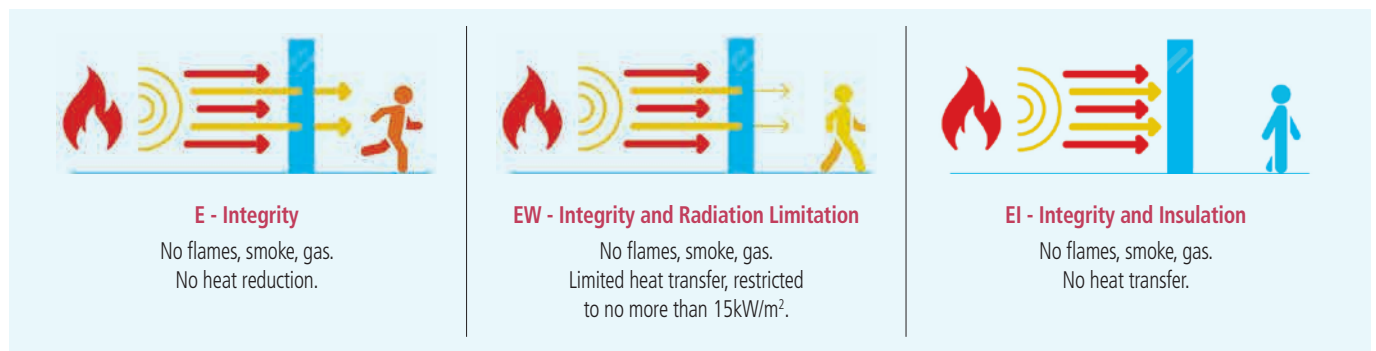
EI 180

AGC

Fire-resistant glass focusing on your safety



Pyrobel 81 is a laminated glass assembled with sheets of glass and fire-resistant clear intumescent interlayers. In the event of fire, the interlayers transform into rigid and opaque fire shields, that keep out flames, limit the heat transfer through the glazing and reduce strongly the temperature on the protected surface of the Pyrobel glass. The glass delivers fire protection in both directions according to the standard EN 13501-2.



Technical data

| Specification / Identification | Pyrobel 81 | Pyrobel 81 EG |
|---|---------------------------|----------------------------|
| Glazing type | Single | Single |
| Grade | Internal | Internal, 1 side UV filter |
| Glass thickness | 81 mm | 85 mm |
| Thickness tolerances | ± 3 mm | ± 3 mm |
| Dimensions tolerances | ± 2 mm | ± 2 mm |
| Weight | ca 187 kg/m ² | ca 195 kg/m ² |
| Minimum dimensions | No minimum | No minimum |
| Light transmission / Light reflection (%) | 68 / 6 | 68 / 6 |
| U value (EN 673) | 4,0 (W/m ² .K) | 3,9 (W/m ² .K) |
| Impact resistance (EN 12600) | 1B1 | 1B1 |
| Sound reduction (EN 12758) Rw (C; Ctr) | NPD* | NPD* |
| Exposure temperatures | -40°C / +50°C | |

* No performance declared, see Glass configurator.

Fire certification

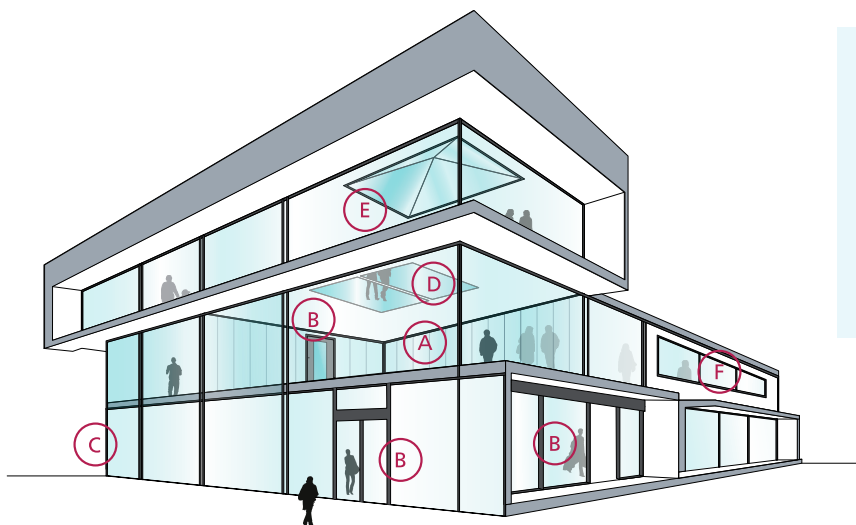
Check out the product selector for availabilities of fire certification on www.agc-pyrobel.com/selector. The installation must be done in compliance with the fire test report. Pyrobel(ite) is extensively tested & approved under different standards: EN, BS, UL, ASTM, NFPA,...

Availability

- SGU** Single glazing unit for internal application
- IGU** Insulated glazing unit for outdoor applications (double or triple glazing)
- EG** External grade version Pyrobel EG is single glazed Pyrobel with a 0,76 mm pvb interlayer and extra glass pane that acts as an UV filter
- VL** Vision Line which is an all-glass butt-joint glazing system without mullions. Multiple fire-resistant panes of glass are interconnected by means of a 4-5 mm silicone joint. Separate technical data sheets are available for this range of products
- SPS** Special products and combinations such as bulletproof and burglar resistant glass

Applications

The Pyrobel product range has been tested in a large variety of aluminium, steel, wood & butt-joint systems:





- A Fire-resistant all-glass partitions
- B Fire-resistant glazed doors
- C Fire-resistant curtain walls - facades
- D Fire-resistant floor glazing
- E Fire-resistant roof glazing
- F Fire resistant windows

Why choose Pyrobel(ite)?



THE SHORTEST DELIVERY TIMES
 Since Pyrobel(ite) **can be cut** by our network of distributors, they can supply you with what you need **quickly and efficiently**.



ACOUSTIC INSULATION
 Pyrobel(ite) has excellent **acoustic insulation properties**.



CRADLE TO CRADLE CERTIFIED
 Pyrobel(ite) is **Cradle to Cradle Certified™ Silver**.



QUALITY
 With 40 years of experience, Pyrobel delivers proven long-term quality. Pyrobel(ite) glass has an excellent optical quality supported by a **10-year warranty**.



PROVIDING SOLUTIONS
 We support our customers **with our high-level expertise**.



MADE IN EUROPE



The information and data contained in this document are subject to change without notice.
 Questions? Contact our sales team! www.agc-pyrobel.com/contact

