

PYROBELITE 7

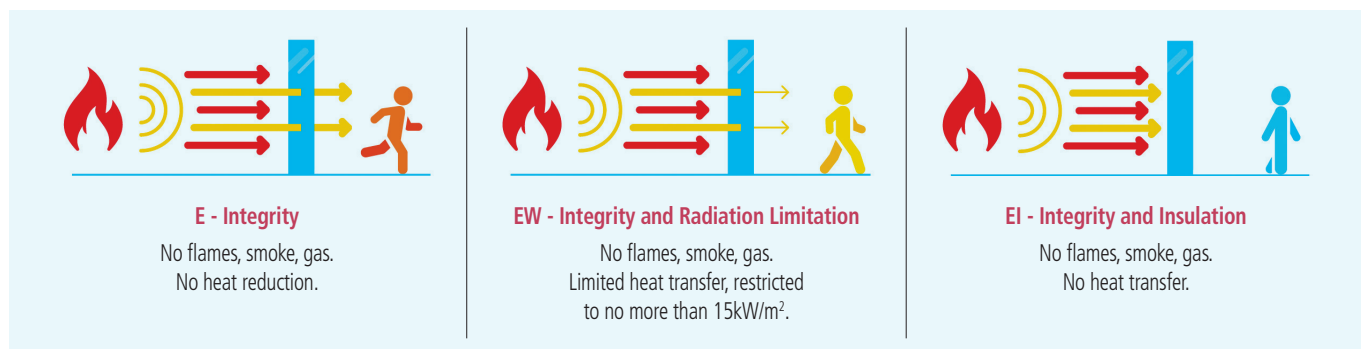
EW30



Fire-resistant glass focusing on your safety



Pyrobelite 7 is a laminated glass assembled with sheets of glass and fire-resistant clear intumescent interlayer(s). In the event of fire, the interlayers transform into rigid and opaque fire shields, that keep out flames and limit the heat transfer through the glazing. The glass delivers fire protection in both directions according to the standard EN 13501-2.



Technical data

| Specification / Identification | Pyrobelite 7 | Pyrobelite 7 IGU |
|---|---------------------------|--|
| Glazing type | Single | Double (or triple) Glazing Unit |
| Grade | Internal | External with UV filter |
| Glass thickness | 7,9 mm | Consult the Glass Configurator: www.agc-yourglass.com/configurator |
| Thickness tolerances | ± 0,9 mm | |
| Dimensions tolerances | ± 2 mm | |
| Weight | ca 17 kg/m ² | |
| Minimum dimensions | No minimum | |
| Light transmission / Light reflection (%) | 88 / 8 | |
| U value (EN 673) | 5,6 W/(m ² .K) | |
| Impact resistance (EN 12600) | 3B3 | |
| Burglar resistance (EN 356)* | NPD** | |
| Sound reduction (EN 12758) Rw (C; Ctr) | 34 (0; -3) dB | |
| Exposure temperatures | -40°C / +50°C | |

* The burglar resistance can be increased from P2A to P8B by assembling in IGU Pyrobel with Stratobel & Stratobel Security.

** No performance declared, see Glass configurator.

Fire certification

Check out the product selector for availabilities of fire certification on www.agc-pyrobel.com/selector. The installation must be done in compliance with the fire test report. Pyrobel(ite) is extensively tested & approved under different standards: EN, BS, UL, ASTM, NFPA, ...



Your Dreams, Our Challenge

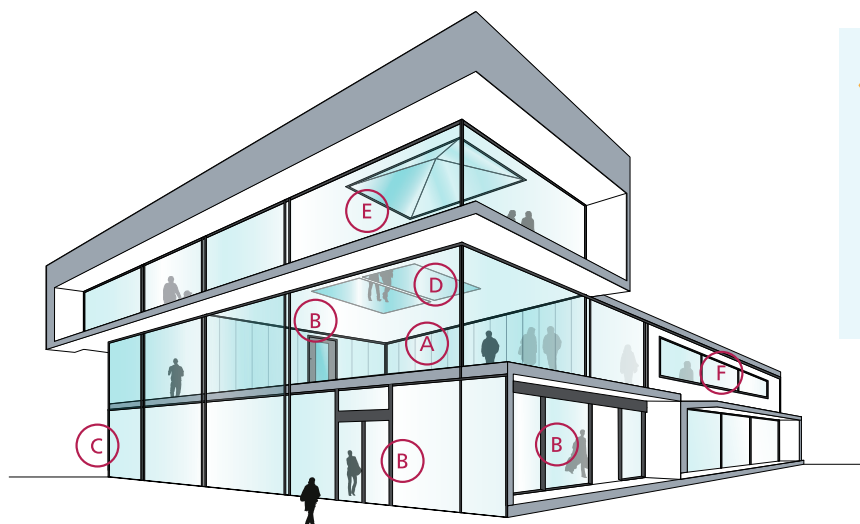
Availability

- SGU** Single glazing unit for internal application
- IGU** Insulated glazing unit for outdoor applications (double or triple glazing)

SPS Special products and combinations such as bulletproof and burglar resistant glass

Applications

The Pyrobel product range has been tested in a large variety of aluminium, steel, wood & butt-joint systems:



- A Fire-resistant all-glass partitions
- B Fire-resistant glazed doors
- C Fire-resistant curtain walls - facades
- D Fire-resistant floor glazing
- E Fire-resistant roof glazing
- F Fire resistant windows

Why choose Pyrobel(ite)?



THE SHORTEST DELIVERY TIMES

Since Pyrobel(ite) **can be cut** by our network of distributors, they can supply you with what you need **quickly and efficiently**.



ACOUSTIC INSULATION

Pyrobel(ite) has excellent **acoustic insulation properties**.



CRADLE TO CRADLE CERTIFIED

Pyrobel(ite) is **Cradle to Cradle Certified™ Silver**.



QUALITY

With 40 years of experience, Pyrobel delivers proven long-term quality. Pyrobel(ite) glass has an excellent optical quality supported by a **10-year warranty**.



PROVIDING SOLUTIONS

We support our customers **with our high-level expertise**.



MADE IN EUROPE



The information and data contained in this document are subject to change without notice.

Questions? Contact our sales team! www.agc-pyrobel.com/contact



PYROBELITE 9 EG

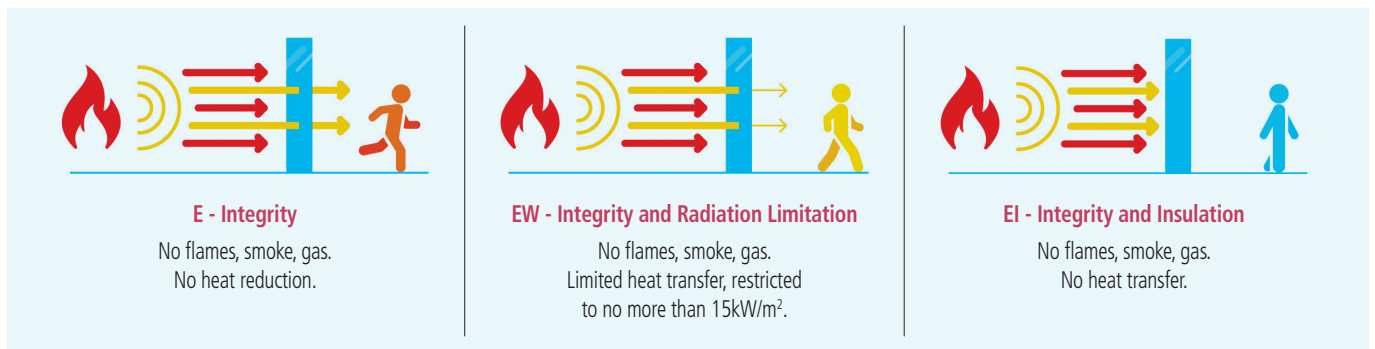
EI20/EW30



Fire-resistant glass focusing on your safety



Pyrobelite 9 EG is a laminated glass assembled with sheets of glass and fire-resistant clear intumescent interlayer(s). In the event of fire, the interlayers transform into rigid and opaque fire shields, that keep out flames and limit the heat transfer through the glazing. The glass delivers fire protection in both directions according to the standard EN 13501-2.



Technical data

| Specification / Identification | Pyrobelite 9 EG | Pyrobelite 9 EG IGU |
|---|----------------------------|--|
| Glazing type | Single | Double (or triple) Glazing Unit |
| Grade | Internal, 1 side UV filter | External with UV filter |
| Glass thickness | 12,06 mm | Consult the Glass Configurator: www.agc-yourglass.com/configurator |
| Thickness tolerances | ± 1,5 mm | |
| Dimensions tolerances | ± 2 mm | |
| Weight | ca 28 kg/m ² | |
| Minimum dimensions | No minimum | |
| Light transmission / Light reflection (%) | 86 / 8 | |
| U value (EN 673) | 5,5 W/(m ² .K) | |
| Impact resistance (EN 12600) | 1B1 | |
| Burglar resistance (EN 356)* | P2A | |
| Sound reduction (EN 12758) Rw (C; Ctr) | 37 (-1; -2) dB | |
| Exposure temperatures | -40°C / +50°C | |

* The burglar resistance can be increased from P2A to P8B by assembling in IGU Pyrobel with Stratobel & Stratobel Security.

Fire certification

Check out the product selector for availabilities of fire certification on www.agc-pyrobel.com/selector. The installation must be done in compliance with the fire test report. Pyrobel(ite) is extensively tested & approved under different standards: EN, BS, UL, ASTM, NFPA, ...



Your Dreams, Our Challenge

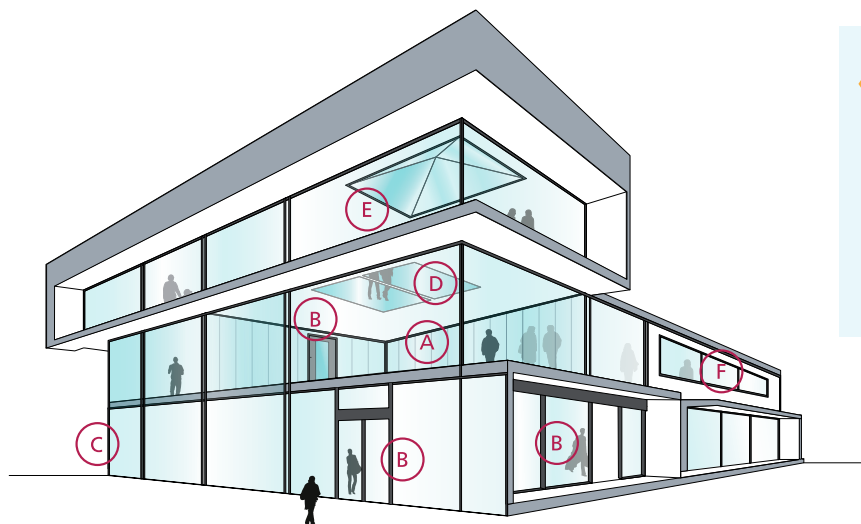
Availability

- SGU** Single glazing unit for internal application
- IGU** Insulated glazing unit for outdoor applications (double or triple glazing)

- EG** External grade version Pyrobel EG is single glazed Pyrobel with a 0,76 mm pvb interlayer and extra glass pane that acts as an UV filter
- SPS** Special products and combinations such as bulletproof and burglar resistant glass

Applications

The Pyrobel product range has been tested in a large variety of aluminium, steel, wood & butt-joint systems:



- A Fire-resistant all-glass partitions
- B Fire-resistant glazed doors
- C Fire-resistant curtain walls - facades
- D Fire-resistant floor glazing
- E Fire-resistant roof glazing
- F Fire resistant windows

Why choose Pyrobel(ite)?



THE SHORTEST DELIVERY TIMES

Since Pyrobel(ite) **can be cut** by our network of distributors, they can supply you with what you need **quickly and efficiently**.



ACOUSTIC INSULATION

Pyrobel(ite) has excellent **acoustic insulation properties**.



CRADLE TO CRADLE CERTIFIED

Pyrobel(ite) is **Cradle to Cradle Certified™ Silver**.



QUALITY

With 40 years of experience, Pyrobel delivers proven long-term quality. Pyrobel(ite) glass has an excellent optical quality supported by a **10-year warranty**.



PROVIDING SOLUTIONS

We support our customers **with our high-level expertise**.



MADE IN EUROPE



The information and data contained in this document are subject to change without notice.

Questions? Contact our sales team! www.agc-pyrobel.com/contact



PYROBELITE 10

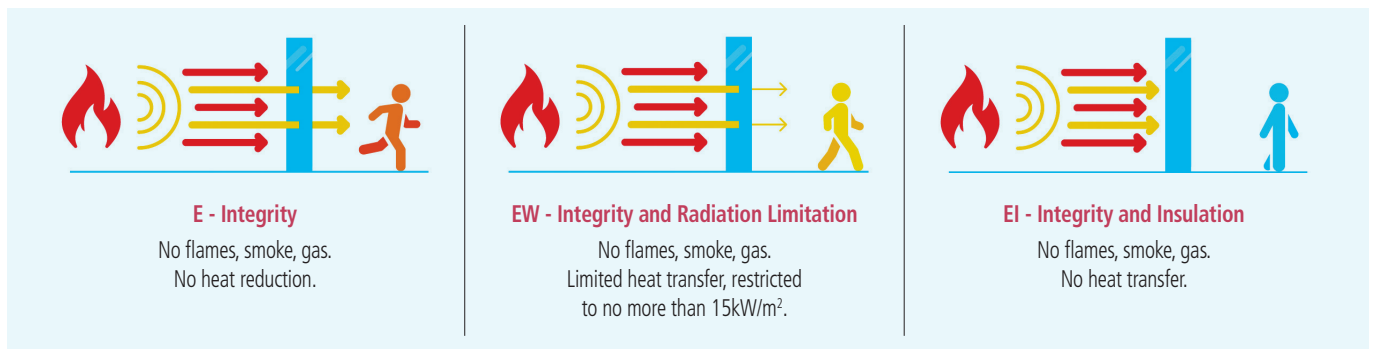
EW30



Fire-resistant glass focusing on your safety



Pyrobelite 10 is a laminated glass assembled with sheets of glass and fire-resistant clear intumescent interlayer(s). In the event of fire, the interlayers transform into rigid and opaque fire shields, that keep out flames and limit the heat transfer through the glazing. The glass delivers fire protection in both directions according to the standard EN 13501-2.



Technical data

| Specification / Identification | Pyrobelite 10 | Pyrobelite 10 IGU |
|---|---------------------------|---|
| Glazing type | Single | Double (or triple) Glazing Unit |
| Grade | Internal | External with UV filter |
| Glass thickness | 11 mm | Consult the Glass Configurator: www.agc-yourglass.com/configurator |
| Thickness tolerances | ± 1 mm | |
| Dimensions tolerances | ± 2 mm | |
| Weight | ca 26 kg/m ² | |
| Minimum dimensions | No minimum | |
| Light transmission / Light reflection (%) | 87 / 8 | |
| CV* Light transmission / Light reflection (%) | 90 / 8 | |
| U value (EN 673) | 5,5 W/(m ² .K) | |
| Impact resistance (EN 12600) | 2B2 | |
| Sound reduction (EN 12758) Rw (C; Ctr) | 37 (-1; -3) dB | |
| Exposure temperatures | -40°C / +50°C | |

* Clearvision (CV) optional, low iron extra clear glass by AGC.

Fire certification

Check out the product selector for availabilities of fire certification on www.agc-pyrobel.com/selector. The installation must be done in compliance with the fire test report. Pyrobel(ite) is extensively tested & approved under different standards: EN, BS, UL, ASTM, NFPA, ...



Your Dreams, Our Challenge

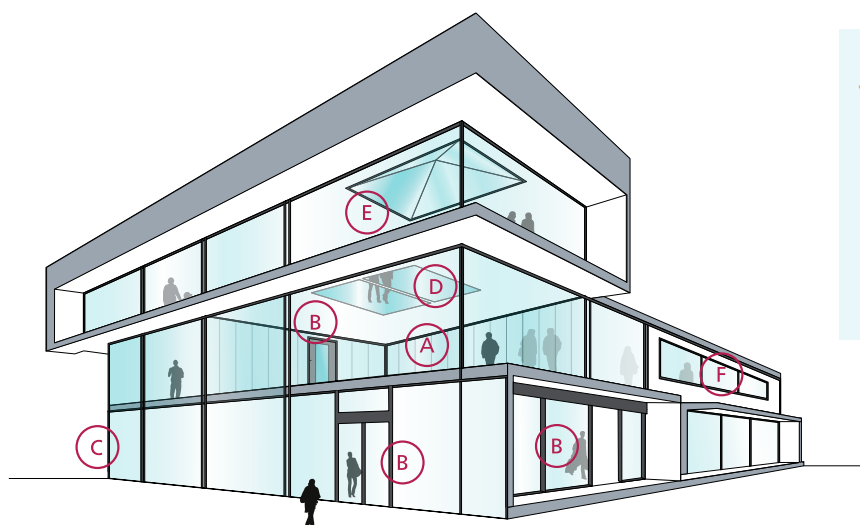
Availability

- SGU** Single glazing unit for internal application
- IGU** Insulated glazing unit for outdoor applications (double or triple glazing)

SPS Special products and combinations such as bulletproof and burglar resistant glass

Applications

The Pyrobel product range has been tested in a large variety of aluminium, steel, wood & butt-joint systems:



- A Fire-resistant all-glass partitions
- B Fire-resistant glazed doors
- C Fire-resistant curtain walls - facades
- D Fire-resistant floor glazing
- E Fire-resistant roof glazing
- F Fire resistant windows

Why choose Pyrobel(ite)?



THE SHORTEST DELIVERY TIMES

Since Pyrobel(ite) **can be cut** by our network of distributors, they can supply you with what you need **quickly and efficiently**.



ACOUSTIC INSULATION

Pyrobel(ite) has excellent **acoustic insulation properties**.



CRADLE TO CRADLE CERTIFIED

Pyrobel(ite) is **Cradle to Cradle Certified™ Silver**.



QUALITY

With 40 years of experience, Pyrobel delivers proven long-term quality. Pyrobel(ite) glass has an excellent optical quality supported by a **10-year warranty**.



PROVIDING SOLUTIONS

We support our customers **with our high-level expertise**.



MADE IN EUROPE



The information and data contained in this document are subject to change without notice.

Questions? Contact our sales team! www.agc-pyrobel.com/contact



PYROBELITE 12

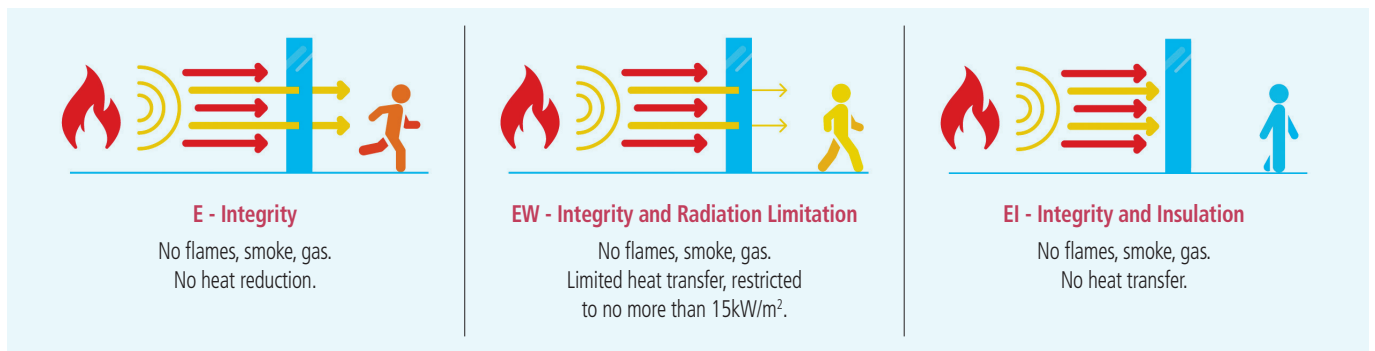
EI20/
EW30/
EW60



Fire-resistant glass focusing on your safety



Pyrobelite 12 is a laminated glass assembled with sheets of glass and fire-resistant clear intumescent interlayer(s). In the event of fire, the interlayers transform into rigid and opaque fire shields, that keep out flames and limit the heat transfer through the glazing. The glass delivers fire protection in both directions according to the standard EN 13501-2.



Technical data

| Specification / Identification | Pyrobelite 12 | Pyrobelite 12 EG | Pyrobelite 12 IGU |
|---|---------------------------|----------------------------|---|
| Glazing type | Single | Single | Double (or triple) Glazing Unit |
| Grade | Internal | Internal, 1 side UV filter | External with UV filter |
| Glass thickness | 12,3 mm | 16,1 mm | Consult the Glass Configurator: www.agc-yourglass.com/configurator |
| Thickness tolerances | ± 1 mm | ± 1 mm | |
| Dimensions tolerances | ± 2 mm | ± 2 mm | |
| Weight | ca 27 kg/m ² | ca 35 kg/m ² | |
| Minimum dimensions | No minimum | No minimum | |
| Light transmission / Light reflection (%) | 87 / 8 | 86 / 8 | |
| CV* Light transmission / Light reflection (%) | 90 / 8 | 90 / 8 | |
| U value (EN 673) | 5,5 W/(m ² .K) | 5,4 W/(m ² .K) | |
| Impact resistance (EN 12600) | 2B2 | 1B1 | |
| Burglar resistance (EN 356)** | NPD*** | P2A | |
| Sound reduction (EN 12758) Rw (C; Ctr) | 36 (-1; -3) dB | 38 (-1; -3) dB | |
| Exposure temperatures | | -40°C / +50°C | |

* Clearvision (CV) optional, low iron extra clear glass by AGC.

** The burglar resistance can be increased from P2A to P8B by laminating or assembling in IGU Pyrobel with Stratobel & Stratobel Security.

*** No performance declared, see Glass configurator.

Fire certification

Check out the product selector for availabilities of fire certification on www.agc-pyrobel.com/selector. The installation must be done in compliance with the fire test report. Pyrobel(ite) is extensively tested & approved under different standards: EN, BS, UL, ASTM, NFPA, ...



Your Dreams, Our Challenge

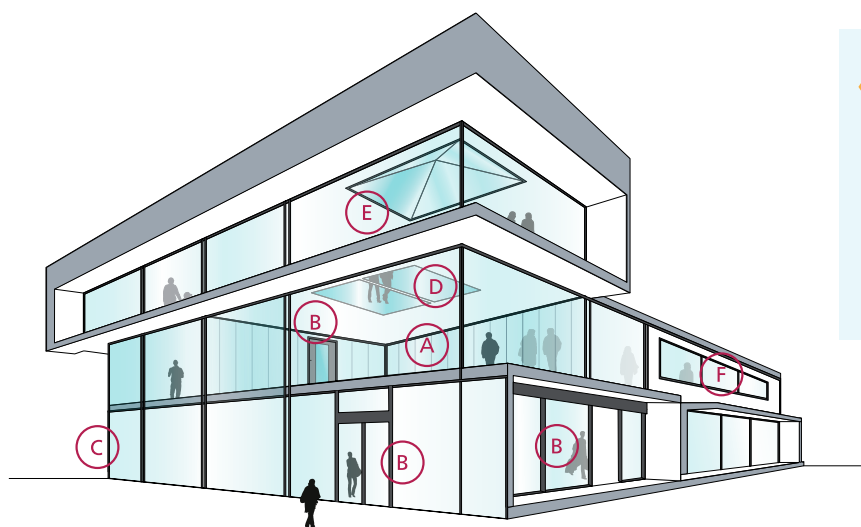
Availability

- SGU** Single glazing unit for internal application
- IGU** Insulated glazing unit for outdoor applications (double or triple glazing)

- EG** External grade version Pyrobel EG is single glazed Pyrobel with a 0,76 mm pvb interlayer and extra glass pane that acts as an UV filter
- SPS** Special products and combinations such as bulletproof and burglar resistant glass

Applications

The Pyrobel product range has been tested in a large variety of aluminium, steel, wood & butt-joint systems:



- A Fire-resistant all-glass partitions
- B Fire-resistant glazed doors
- C Fire-resistant curtain walls - facades
- D Fire-resistant floor glazing
- E Fire-resistant roof glazing
- F Fire resistant windows

Why choose Pyrobel(ite)?



THE SHORTEST DELIVERY TIMES
Since Pyrobel(ite) **can be cut** by our network of distributors, they can supply you with what you need **quickly and efficiently**.



ACOUSTIC INSULATION
Pyrobel(ite) has excellent **acoustic insulation properties**.



CRADLE TO CRADLE CERTIFIED
Pyrobel(ite) is **Cradle to Cradle Certified™ Silver**.



QUALITY
With 40 years of experience, Pyrobel delivers proven long-term quality. Pyrobel(ite) glass has an excellent optical quality supported by a **10-year warranty**.



PROVIDING SOLUTIONS
We support our customers **with our high-level expertise**.



MADE IN EUROPE



The information and data contained in this document are subject to change without notice.
Questions? Contact our sales team! www.agc-pyrobel.com/contact

